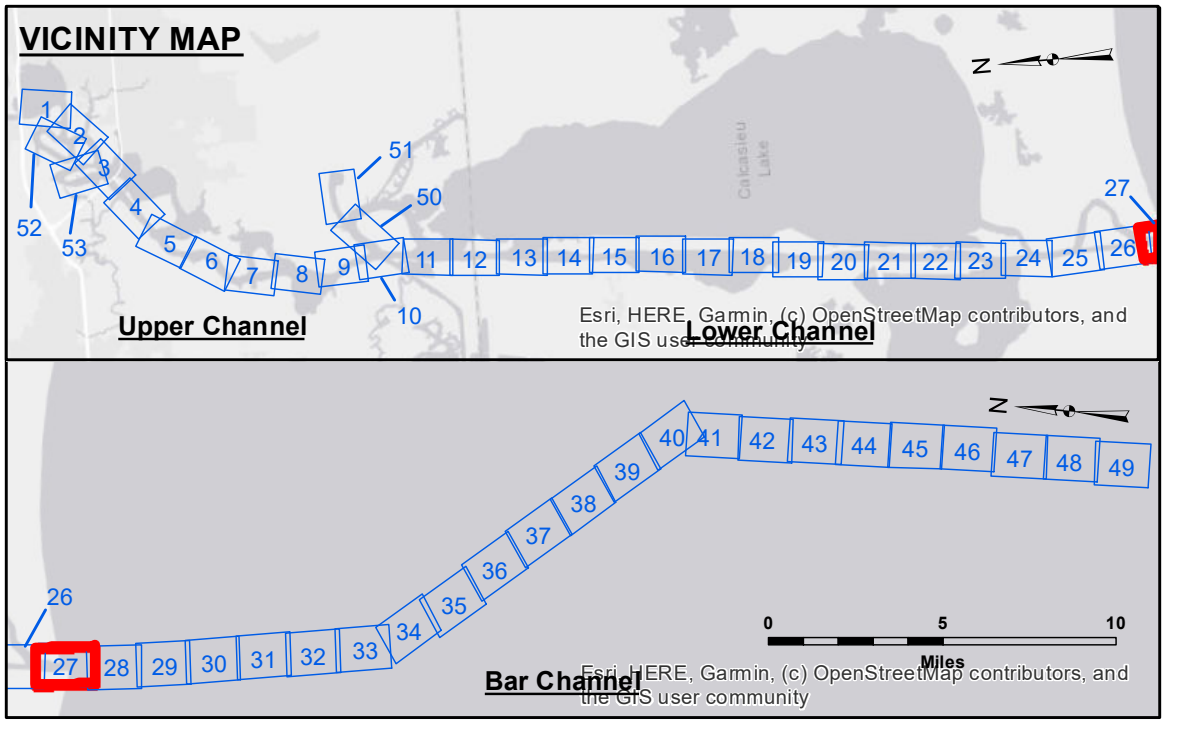


**DISCLAIMER**  
 The United States Government furnishes these data and the recipient accepts and uses them with the express understanding that the data are not warranted for any particular purpose, expressed or implied, concerning the accuracy, completeness, reliability, usability or suitability for any particular purpose of the recipient. The user is responsible for the results obtained from the use of the data for other than intended purposes. Application of the data for other than intended purposes may be hazardous to life and property.  
 Data Constraints: Hydrographic survey data is subject to change rapidly due to several factors including, but not limited to, changing channel conditions, shifting sandbars, and other natural processes. The user is responsible for the results obtained from the use of the data for other than intended purposes. The information depicted on this map represents the results of a hydrographic survey conducted on the date of the survey and is not intended to represent the general condition existing at that time.

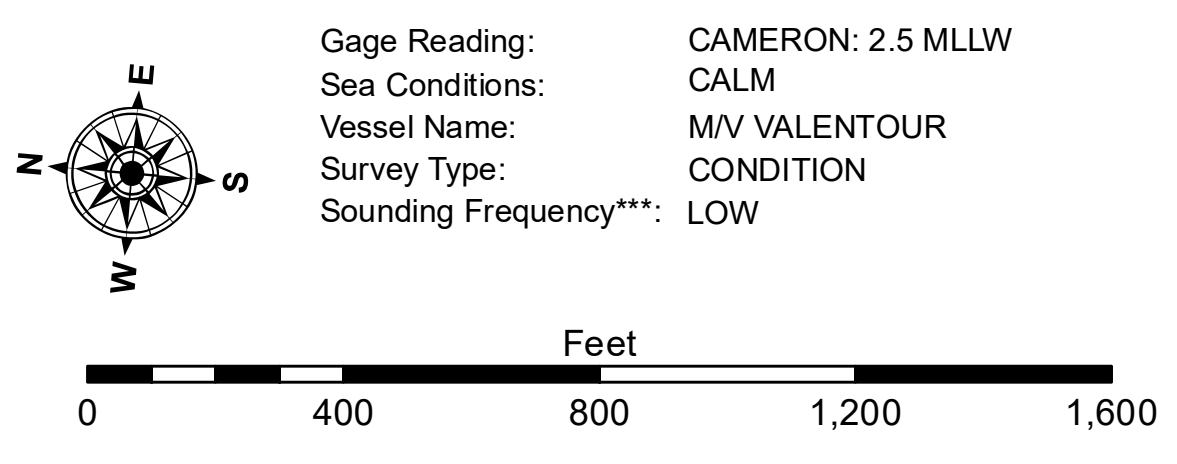
|  |              |             |
|--|--------------|-------------|
| U.S. ARMY CORPS OF ENGINEERS<br>NEW ORLEANS DISTRICT |              |             |
| Submitted:   | Surveyed By: | Checked By: |
| Recommended:   | RYLAND/ADAMS | AO          |
| Chief, Survey Section                                |              | AO          |
| Chief, Waterways Maintenance Section                 |              |             |

**CALCASIEU SHIP CHANNEL  
 GAP SHEET 27  
 CR\_27\_GAP\_20200831\_CS\_POSTSTORM  
 31 August 2020**

**Sheet Reference Number  
 27 of 53**



| LEGEND                           |                       |
|----------------------------------|-----------------------|
| --- Federal Navigation Channel   | ○ Cable Area          |
| — Federal Navigation Center Line | □ Placement Area      |
| — As-built Pipeline/Cable        | □ Anchorage Area      |
| ..... Unconfirmed Pipeline/Cable | ⊗ Obstruction Point   |
| — Project Depth Contour          | ⚓ Wrecks-Submerged    |
| 3 Fluff Thickness (feet)*        | ★ Beacon, General     |
| ● Shoalest Sounding**            | ◆ Red Navigation Buoy |
| ◆ Green Navigation Buoy          |                       |



**NOTES:**  
 Horizontal Coordinate System:  
 North American Datum of 1983 (NAD83), projected to the State Plane Coordinate System (SPCS), Louisiana South Zone. Distance units in U.S. Survey Feet.  
 Vertical Datum:  
 Soundings are shown in feet and indicate depths below Mean Lower Low Water Datum (MLLW).  
 Datum Relationships for gage 73650 as of December 2013:  
 0.0' NAVD83 (2009.55) = 1.3' MLLW = 2.3' MLG or 0.0' MLLW = 1.0' MLG  
 Distances on the Calcasieu River are shown at 1 mile intervals.  
 The location of navigation aids are based on and provided by the U.S. Coast Guard and USACE survey crews.  
 2015 Aerial Photography data source: NAIP  
 Reference is N.O.A.A. Navigation Chart No. 11339.  
 \* Difference between high and low frequency elevations where greater than 1.0'.  
 \*\* Shoalest Sounding per Quarter per Reach.  
 \*\*\* High frequency (200 kHz) survey data represents the first signal return at a sounding location and will include suspended solids, known as "fluff", if present. Low frequency (20 kHz) survey data normally penetrates through this "fluff" layer to depict elevations of consolidated bottom material. Low frequency accuracies may vary depending on channel conditions and fathometer settings.