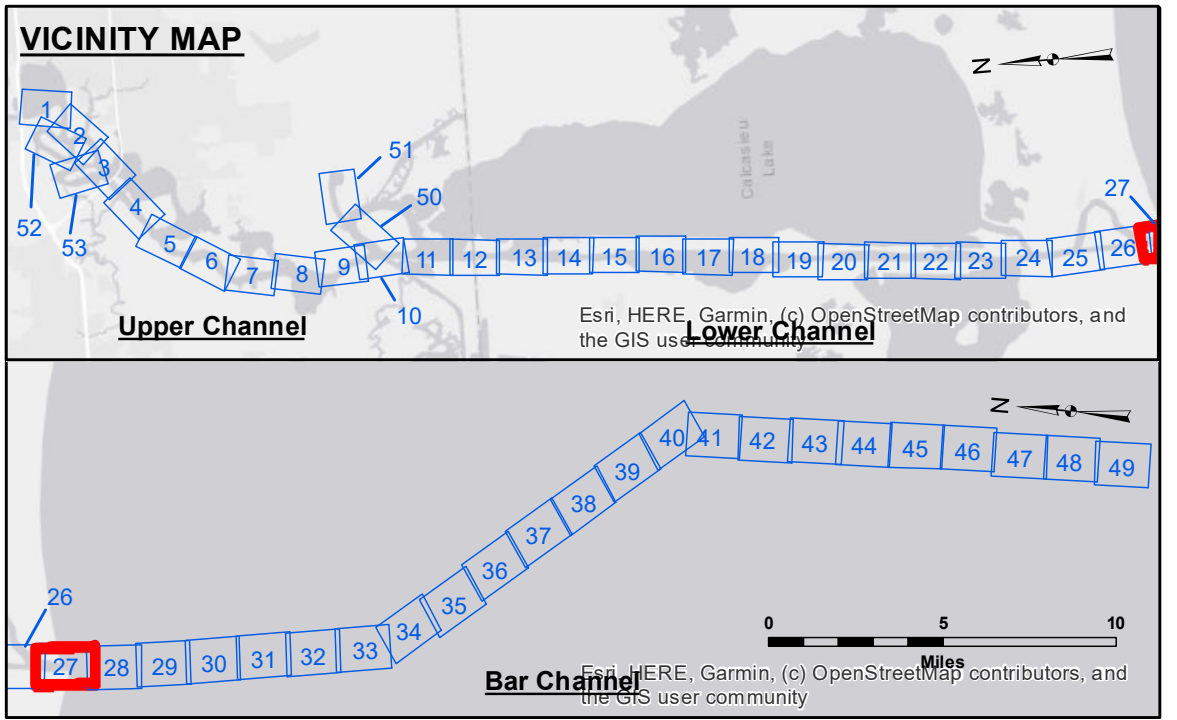


DISCLAIMER
 The United States Government furnishes these data and the recipient accepts and uses them with the express understanding that the data are not warranted for accuracy, completeness, reliability, usability, or suitability for any particular purpose of the recipient. The user is responsible for the results of the use of the data for other than its intended purpose.
 Distribution Liability: The data represents the results of data collection/processing for a specific US Army Corps of Engineers project. The data is only valid for its intended use, control, time and accuracy specifications. The user is responsible for the results of the use of the data for other than its intended purpose.
 Data Constants: Hydrographic survey data is subject to change rapidly due to several factors including but not limited to dredging, sedimentation, and changes in bathymetry. The user is responsible for the results of the use of the data for other than its intended purpose.
 The information depicted on this map represents the results of a survey conducted on the date shown. It is not intended to be used to represent the general condition existing at that time.

U.S. ARMY CORPS OF ENGINEERS NEW ORLEANS DISTRICT	
Submitted:	Surveyed By: SP-JS
Recommended:	Plotted By: BD
Approved:	Checked By: AD/JH

**CALCASIEU SHIP CHANNEL
 GAP SHEET 27
 CR_27_GAP_20240529_CS
 29 May 2024**



LEGEND	
--- Federal Navigation Channel	○ Cable Area
— Federal Navigation Center Line	□ Placement Area
— As-built Pipeline/Cable	□ Anchorage Area
..... Unconfirmed Pipeline/Cable	⊗ Obstruction Point
— Project Depth Contour	⚓ Wrecks-Submerged
3 Fluff Thickness (feet)*	★ Beacon, General
● Shoalest Sounding**	◆ Red Navigation Buoy
◆ Green Navigation Buoy	

NOTES:
 Horizontal Coordinate System:
 North American Datum of 1983 (NAD83), projected to the State Plane Coordinate System (SPCS), Louisiana South Zone. Distance units in U.S. Survey Feet.
 Vertical Datum:
 Soundings are shown in feet and indicate depths below Mean Lower Low Water (MLLW).
 Datum Relationships for gage 73650 as of December 2013:
 0.0' NAVD83 (2009.55) = 1.3' MLLW = 2.3' MLG or 0.0' MLLW = 1.0' MLG
 Distances on the Calcasieu River are shown at 1 mile intervals.
 The location of navigation aids are based on and provided by the U.S. Coast Guard and USACE survey crews.
 2022 Aerial Photography data source: PAR LLC
 Reference is N.O.A. Navigation Chart No. 11339.
 * Difference between high and low frequency elevations where greater than 1.0'.
 ** Shoalest Sounding per Quarter per Reach.
 *** High frequency (200 kHz) survey data represents the first signal return at a sounding location and will include suspended solids, known as "fluff", if present. Low frequency (20 kHz) survey data normally penetrates through this "fluff" layer to depict elevations of consolidated bottom material. Low frequency accuracies may vary depending on channel conditions and fathometer settings.

Gage Reading: CAMERON VRN:2.83 MLLW AVG.
 Sea Conditions: CHOPPY
 Vessel Name: MV TECHE
 Survey Type: CONDITION
 Sounding Frequency***: LOW

**Sheet Reference Number
 27 of 53**