



**DISCLAIMER**  
The United States Government furnishes no warranty, either expressed or implied, for the accuracy, reliability, or completeness of the information provided herein. The user is responsible for the use of the information and for the consequences of any action taken thereon. The user is also responsible for the accuracy, reliability, or completeness of the information provided herein. The user is also responsible for the use of the information and for the consequences of any action taken thereon. The user is also responsible for the accuracy, reliability, or completeness of the information provided herein. The user is also responsible for the use of the information and for the consequences of any action taken thereon.

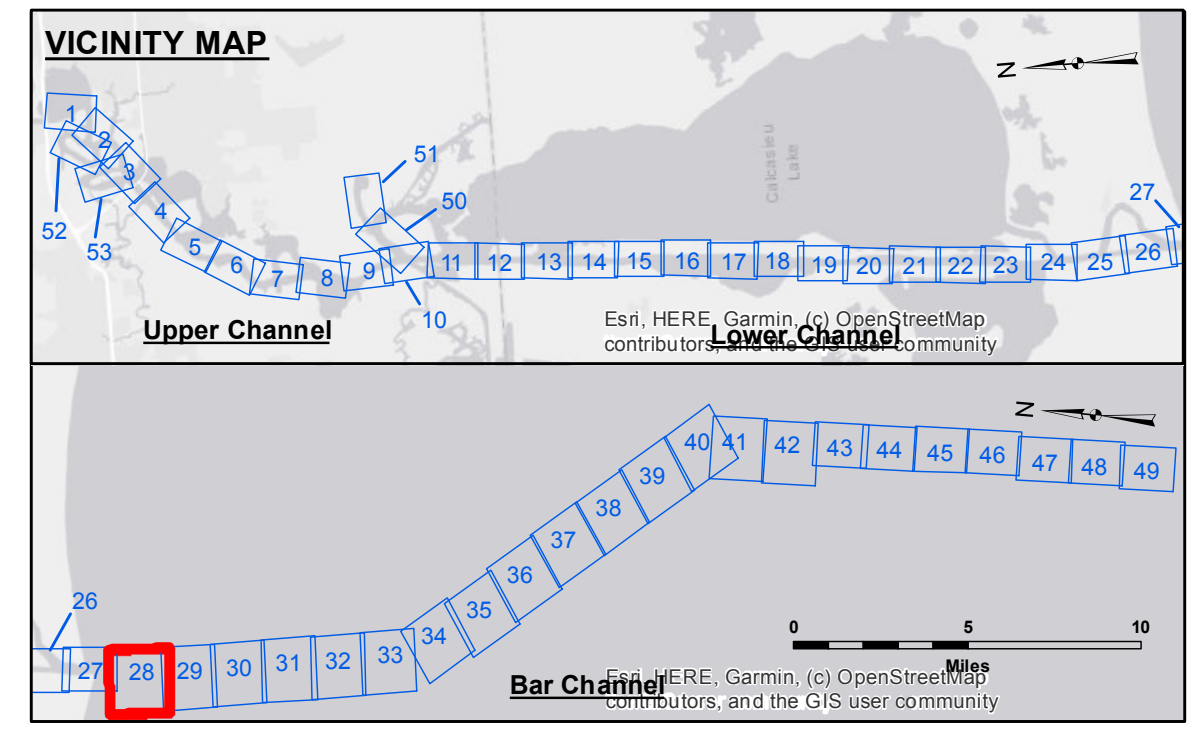
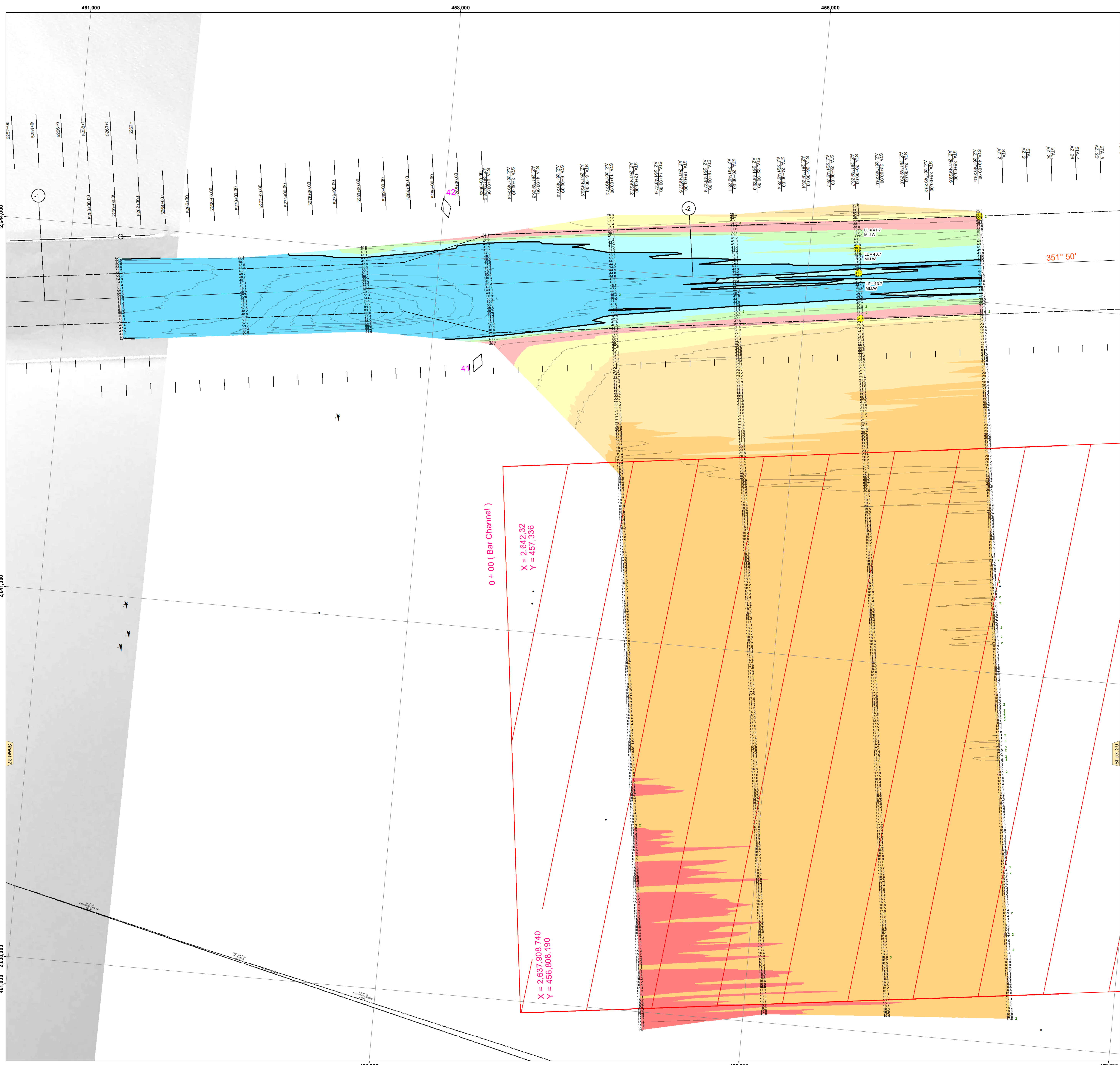
U.S. ARMY CORPS OF ENGINEERS  
NEW ORLEANS DISTRICT

Submitted: \_\_\_\_\_  
Checked By: \_\_\_\_\_  
Approved: \_\_\_\_\_

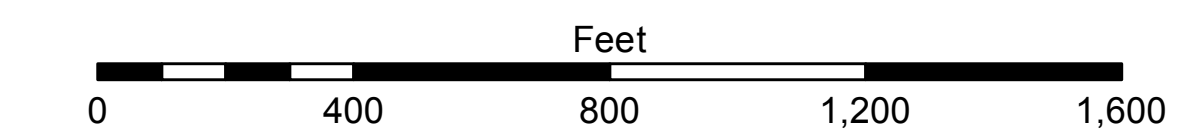
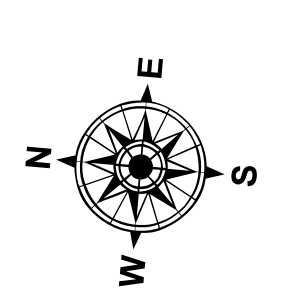
**CALCASIEU SHIP CHANNEL**  
**BAR SHEET 28**  
**CR\_28\_BARX\_20220105\_CS**  
**05 January 2022**

Sheet Reference Number  
**28 of 53**

Revision Number:  
4.2-2009(03)



| LEGEND                           |                         |
|----------------------------------|-------------------------|
| --- Federal Navigation Channel   | ○ Cable Area            |
| — Federal Navigation Center Line | □ Placement Area        |
| — As-built Pipeline/Cable        | □ Anchorage Area        |
| ..... Unconfirmed Pipeline/Cable | ⊠ Obstruction Point     |
| — Project Depth Contour          | ✈ Wrecks-Submerged      |
| 3 Fluff Thickness (feet)*        | ★ Beacon, General       |
| ● Shoalest Sounding**            | ★ Red Navigation Buoy   |
| ● Fluff Thickness (feet)*        | ◆ Green Navigation Buoy |



Gage Reading: CAMERON: 2.34 MLLW AVG  
Sea Conditions: CHOPPY  
Vessel Name: MV LAFORCHE  
Survey Type: CONDITION  
Sounding Frequency\*\*\*: LOW

**NOTES:**  
Horizontal Coordinate System:  
North American Datum of 1983 (NAD83), projected to the State Plane Coordinate System (SPCS), Louisiana South Zone. Distance units in U.S. Survey Feet.  
Vertical Datum:  
Soundings are shown in feet and indicate depths below Mean Lower Low Water Datum (MLLW). Datum Relationships for gage 73650 as of December 2013:  
0.0' NAVD88 (2009.55) = 1.3' MLLW = 2.3' MLG or 0.0' MLLW = 1.0' MLG  
Distances on the Calcasieu River are shown at 1 mile intervals.  
The location of navigation aids are based on and provided by the U.S. Coast Guard and USACE survey crews.  
2015 Aerial Photography data source: NAIP  
Reference is N.O.A. Navigation Chart No. 11339.  
\* Difference between high and low frequency elevations where greater than 1.0'.  
\*\* Shoalest Sounding per Quarter per Reach.  
\*\*\* High frequency (200 kHz) survey data represents the first signal return at a sounding location and will include suspended solids, known as "fluff", if present. Low frequency (20 kHz) survey data normally penetrates through this "fluff" layer to depict elevations of consolidated bottom material. Low frequency accuracies may vary depending on channel conditions and fathometer settings.