

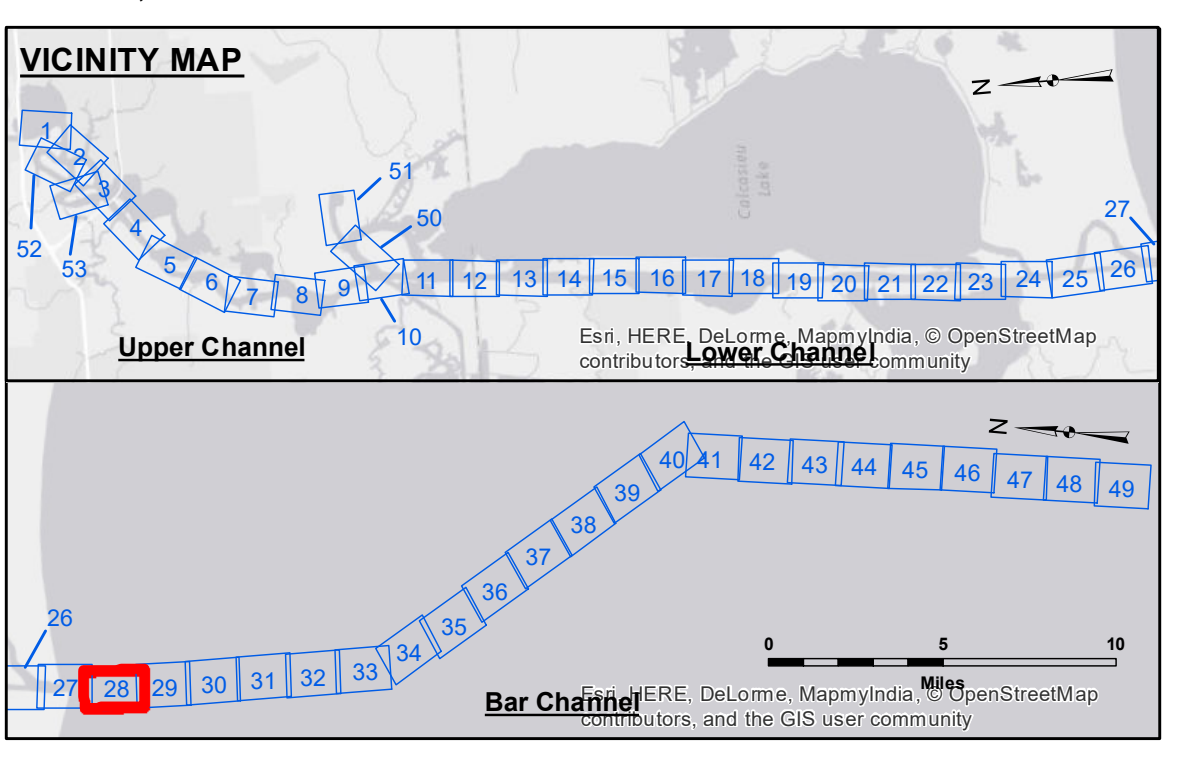
DISCLAIMER
 The information depicted on this map represents the results of a hydrographic survey conducted by the U.S. Army Corps of Engineers. The data is provided for informational purposes only and is not intended for navigation. The user is responsible for the accuracy, completeness, and reliability of the data. The user is advised to verify the data against other sources before use. The U.S. Army Corps of Engineers does not warrant the accuracy, completeness, or reliability of the data. The user is advised to use the data at their own risk. The U.S. Army Corps of Engineers is not responsible for any damage or loss resulting from the use of the data. The information depicted on this map represents the results of a hydrographic survey conducted by the U.S. Army Corps of Engineers. The data is provided for informational purposes only and is not intended for navigation. The user is responsible for the accuracy, completeness, and reliability of the data. The user is advised to verify the data against other sources before use. The U.S. Army Corps of Engineers does not warrant the accuracy, completeness, or reliability of the data. The user is advised to use the data at their own risk. The U.S. Army Corps of Engineers is not responsible for any damage or loss resulting from the use of the data.

Submitted:	Surveyed By:
Recommended:	SP-SR
Checked By:	BD
Approved:	AC

U.S. ARMY CORPS OF ENGINEERS
 NEW ORLEANS DISTRICT

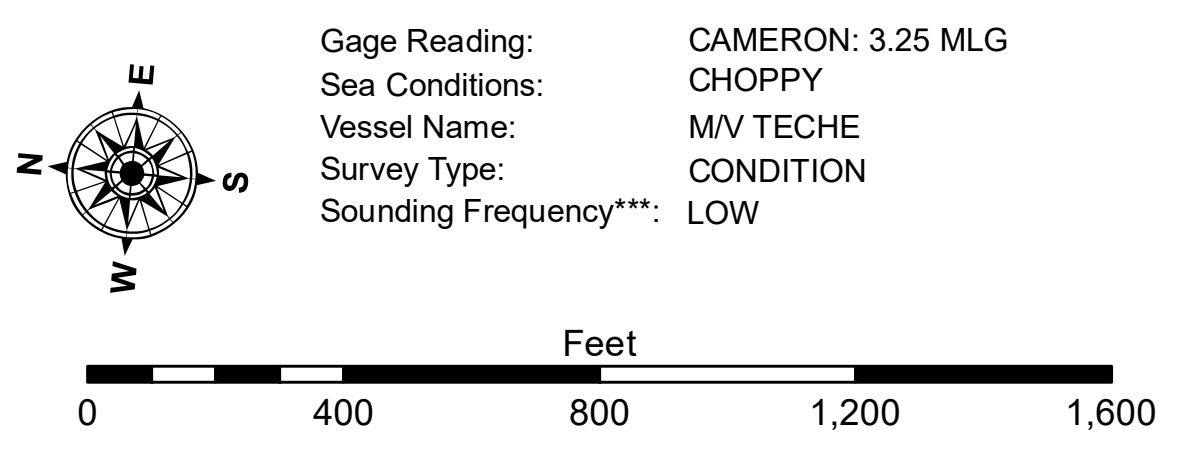
CALCASIEU SHIP CHANNEL
BAR SHEET 28
CR_28_BAR_20170925_CS
25 September 2017

Sheet Reference Number
28 of 53



LEGEND

--- Federal Navigation Channel	○ Cable Area	3 Fluff Thickness (feet)*	■ -15' and above
— Federal Navigation Center Line	□ Placement Area	● Shoalest Sounding**	■ -15' to -20'
— As-built Pipeline/Cable	⊗ Anchorage Area	★ Beacon, General	■ -20' to -25'
..... Unconfirmed Pipeline/Cable	⊗ Obstruction Point	◆ Red Navigation Buoy	■ -25' to -32'
— Project Depth Contour	✈ Wrecks-Submerged	◆ Green Navigation Buoy	■ -32' to -38'
			■ -38' to -40'
			■ -40' to -42'
			■ -42' and below



NOTES:
 Horizontal Coordinate System:
 North American Datum of 1983 (NAD83), projected to the State Plane Coordinate System (SPCS), Louisiana South Zone. Distance units in U.S. Survey Feet.
 Vertical Datum:
 Soundings are shown in feet and indicate depths below Mean Low Gulf Datum (MLG).
 Datum Relationships for gage 73650 as of December 2013:
 0.0' NAVD88 (2009.55) = 1.3' MLLW = 2.3' MLG or 0.0' MLLW = 1.0' MLG
 Distances on the Calcasieu River are shown at 1 mile intervals.
 The location of navigation aids are based on and provided by the U.S. Coast Guard and USACE survey crews.
 2015 Aerial Photography data source: NAIP
 Reference is N.O.A. Navigation Chart No. 11339.
 * Difference between high and low frequency elevations where greater than 1.0'.
 ** Shoalest Sounding per Quarter per Reach.
 *** High frequency (200 kHz) survey data represents the first signal return at a sounding location and will include suspended solids, known as "fluff", if present. Low frequency (20 kHz) survey data normally penetrates through this "fluff" layer to depict elevations of consolidated bottom material. Low frequency accuracies may vary depending on channel conditions and fathometer settings.