

US Army Corps of Engineers District: CEMVN

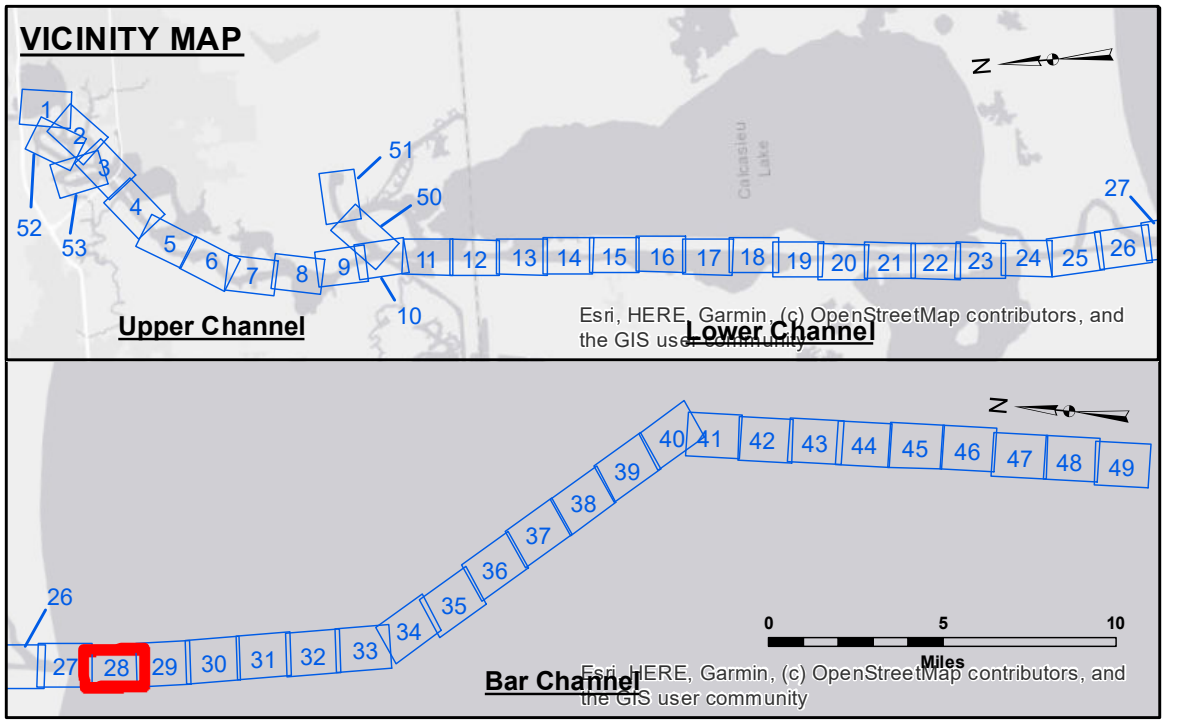
DISCLAIMER: The data represented on this map represents the results of a hydrographic survey conducted by the United States Army Corps of Engineers. The data is provided for informational purposes only and is not intended for navigation. The user is responsible for the accuracy, completeness, and reliability of the data. The user is advised to verify the data against other sources before using it for navigation. The user is also advised to consult the latest Notices to Mariners for any changes to the data. The user is further advised that the data is not to be used for any purpose other than that for which it was collected. The user is also advised that the data is not to be used for any purpose other than that for which it was collected. The user is further advised that the data is not to be used for any purpose other than that for which it was collected.

Submitted:	Surveyed By: JDH/JA
Recommended:	Plotted By: AO
Approved:	Checked By: AO

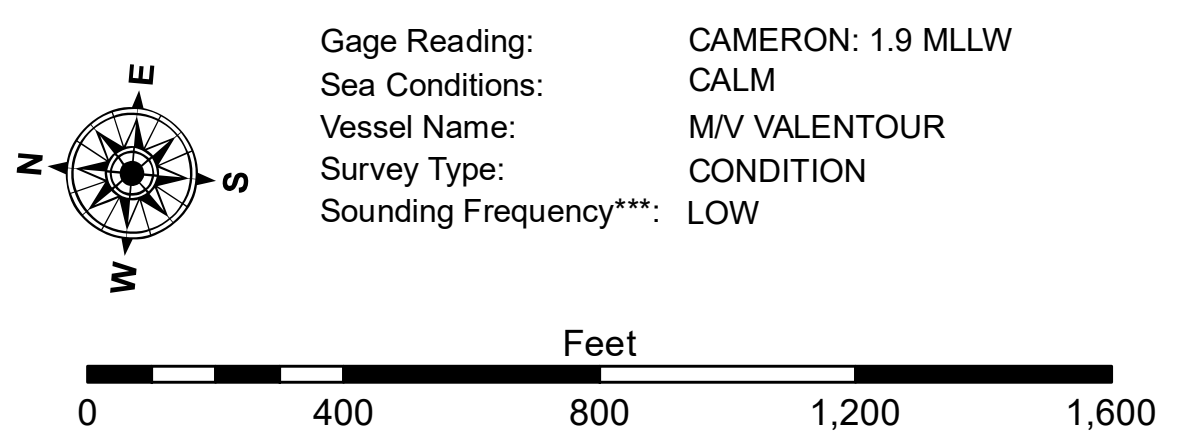
U.S. ARMY CORPS OF ENGINEERS
NEW ORLEANS DISTRICT

Chief, Waterways Maintenance Section

**CALCASIEU SHIP CHANNEL
BAR SHEET 28
CR_28_BAR_20201001_PR
01 October 2020**



LEGEND			
--- Federal Navigation Channel	● Cable Area	3 Fluff Thickness (feet)*	-16' and above
— Federal Navigation Center Line	□ Placement Area	● Shoalest Sounding**	-16' to -21'
— As-built Pipeline/Cable	□ Anchorage Area	☆ Beacon, General	-21' to -26'
..... Unconfirmed Pipeline/Cable	⊗ Obstruction Point	◆ Red Navigation Buoy	-26' to -33'
— Project Depth Contour	✈ Wrecks-Submerged	◆ Green Navigation Buoy	-33' to -39'
			-39' to -41'
			-41' to -43'
			-43' and below



NOTES:
Horizontal Coordinate System: North American Datum of 1983 (NAD83), projected to the State Plane Coordinate System (SPCS), Louisiana South Zone. Distance units in U.S. Survey Feet.
Vertical Datum: Soundings are shown in feet and indicate depths below Mean Lower Low Water Datum (MLLW). Datum Relationships for gage 73650 as of December 2013: 0.0' NAVD88 (2009.55) = 1.3' MLLW = 2.3' MLG or 0.0' MLLW = 1.0' MLG
Distances on the Calcasieu River are shown at 1 mile intervals.
The location of navigation aids are based on and provided by the U.S. Coast Guard and USACE survey crews.
2015 Aerial Photography data source: NAIP
Reference is N.O.A.A. Navigation Chart No. 11339.
* Difference between high and low frequency elevations where greater than 1.0'.
** Shoalest Sounding per Quarter per Reach.
*** High frequency (200 kHz) survey data represents the first signal return at a sounding location and will include suspended solids, known as "fluff", if present. Low frequency (20 kHz) survey data normally penetrates through this "fluff" layer to depict elevations of consolidated bottom material. Low frequency accuracies may vary depending on channel conditions and fathometer settings.

**Sheet Reference Number
28 of 53**