

US Army Corps of Engineers District: CEMVN

DISCLAIMER: The United States Government furnishes these data and the recipient accepts and uses them with the express understanding that the Government makes no warranty, expressed or implied, regarding the accuracy, completeness, reliability, usability or suitability for any particular purpose of the information. The user is responsible for the results obtained from the use of this information. The user shall not hold the United States Government liable for any damages, including but not limited to, direct, indirect, special, incidental or consequential damages, arising out of the use of this information. The user shall not transfer this information to any other person or entity without the express written consent of the United States Government. The information depicted on this map represents the results of a survey conducted on or about the date shown and is not intended to represent the general condition existing at that time.

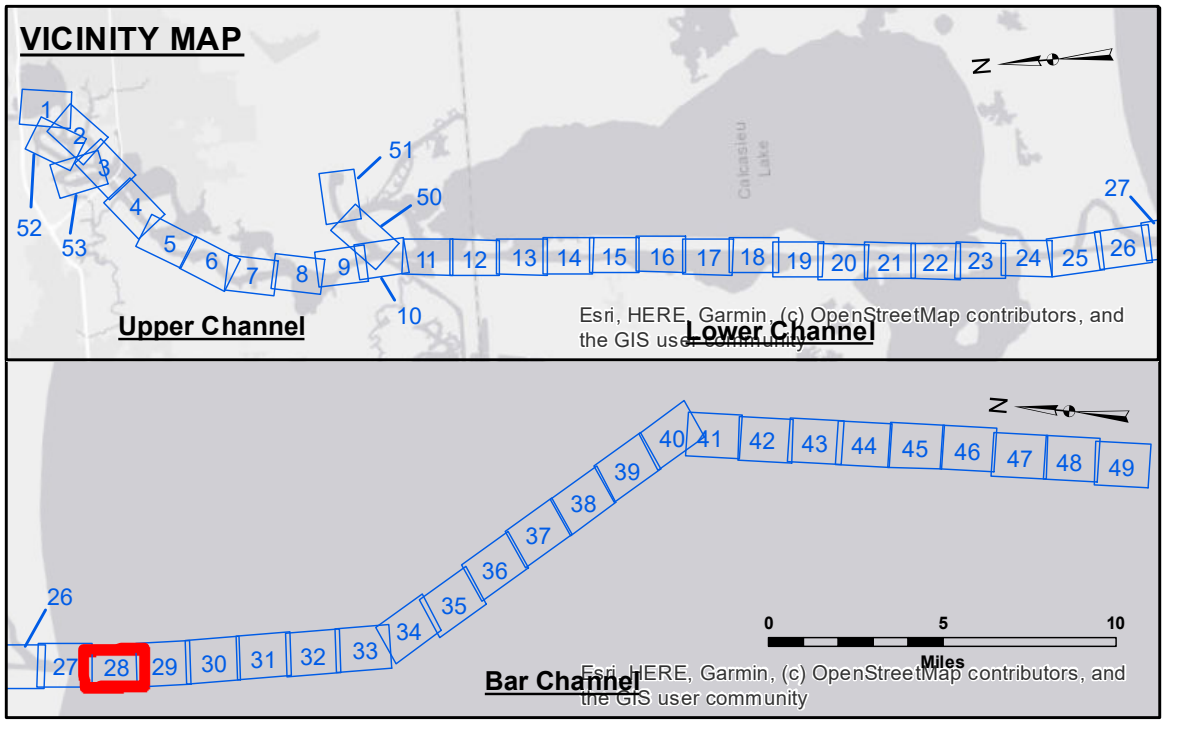
Access Constraints: The United States Government furnishes these data and the recipient accepts and uses them with the express understanding that the Government makes no warranty, expressed or implied, regarding the accuracy, completeness, reliability, usability or suitability for any particular purpose of the information. The user is responsible for the results obtained from the use of this information. The user shall not hold the United States Government liable for any damages, including but not limited to, direct, indirect, special, incidental or consequential damages, arising out of the use of this information. The user shall not transfer this information to any other person or entity without the express written consent of the United States Government. The information depicted on this map represents the results of a survey conducted on or about the date shown and is not intended to represent the general condition existing at that time.

Hydrographic Survey Data: Hydrographic survey data is subject to change rapidly due to several factors including but not limited to dredging, sedimentation, and changes in channel conditions. The user is responsible for the results obtained from the use of this information. The user shall not hold the United States Government liable for any damages, including but not limited to, direct, indirect, special, incidental or consequential damages, arising out of the use of this information. The user shall not transfer this information to any other person or entity without the express written consent of the United States Government. The information depicted on this map represents the results of a survey conducted on or about the date shown and is not intended to represent the general condition existing at that time.

U.S. ARMY CORPS OF ENGINEERS NEW ORLEANS DISTRICT	
Submitted By: RYLAND/DAMAS	Plotted By: BD
Recommended By: Chief, Survey Section	Checked By: AC
Approved: Chief, Waterways Maintenance Section	

CALCASIEU SHIP CHANNEL
BAR SHEET 28
CR_28_BAR_20201012_CS
12 October 2020

Sheet Reference Number
28 of 53



LEGEND			
--- Federal Navigation Channel	○ Cable Area	3 Fluff Thickness (feet)*	-16' and above
— Federal Navigation Center Line	□ Placement Area	● Shoalest Sounding**	-16' to -21'
— As-built Pipeline/Cable	⊗ Anchorage Area	★ Beacon, General	-21' to -26'
..... Unconfirmed Pipeline/Cable	⊗ Obstruction Point	◆ Red Navigation Buoy	-26' to -33'
— Project Depth Contour	✈ Wrecks-Submerged	◆ Green Navigation Buoy	-33' to -39'
			-39' to -41'
			-41' to -43'
			-43' and below

Gage Reading: CAMERON: 2.46 MLLW AVG.
Sea Conditions: CALM
Vessel Name: M/V VALENTOUR
Survey Type: CONDITION
Sounding Frequency***: LOW

NOTES:
Horizontal Coordinate System: North American Datum of 1983 (NAD83), projected to the State Plane Coordinate System (SPCS), Louisiana South Zone. Distance units in U.S. Survey Feet.
Vertical Datum: Sounding Datum: 2.46 MLLW AVG.
Soundings are shown in feet and indicate depths below Mean Lower Low Water Datum (MLLW). Datum Relationships for gage 73650 as of December 2013: 0.0' NAVD88 (2009.55) = 1.3' MLLW = 2.3' MLG or 0.0' MLLW = 1.0' MLG
Distances on the Calcasieu River are shown at 1 mile intervals.
The location of navigation aids are based on and provided by the U.S. Coast Guard and USACE survey crews.
2015 Aerial Photography data source: NAIP
Reference is N.O.A.A. Navigation Chart No. 11339.
* Difference between high and low frequency elevations where greater than 1.0'.
** Shoalest Sounding per Quarter per Reach.
*** High frequency (200 kHz) survey data represents the first signal return at a sounding location and will include suspended solids, known as "fluff", if present. Low frequency (20 kHz) survey data normally penetrates through this "fluff" layer to depict elevations of consolidated bottom material. Low frequency accuracies may vary depending on channel conditions and fathometer settings.