

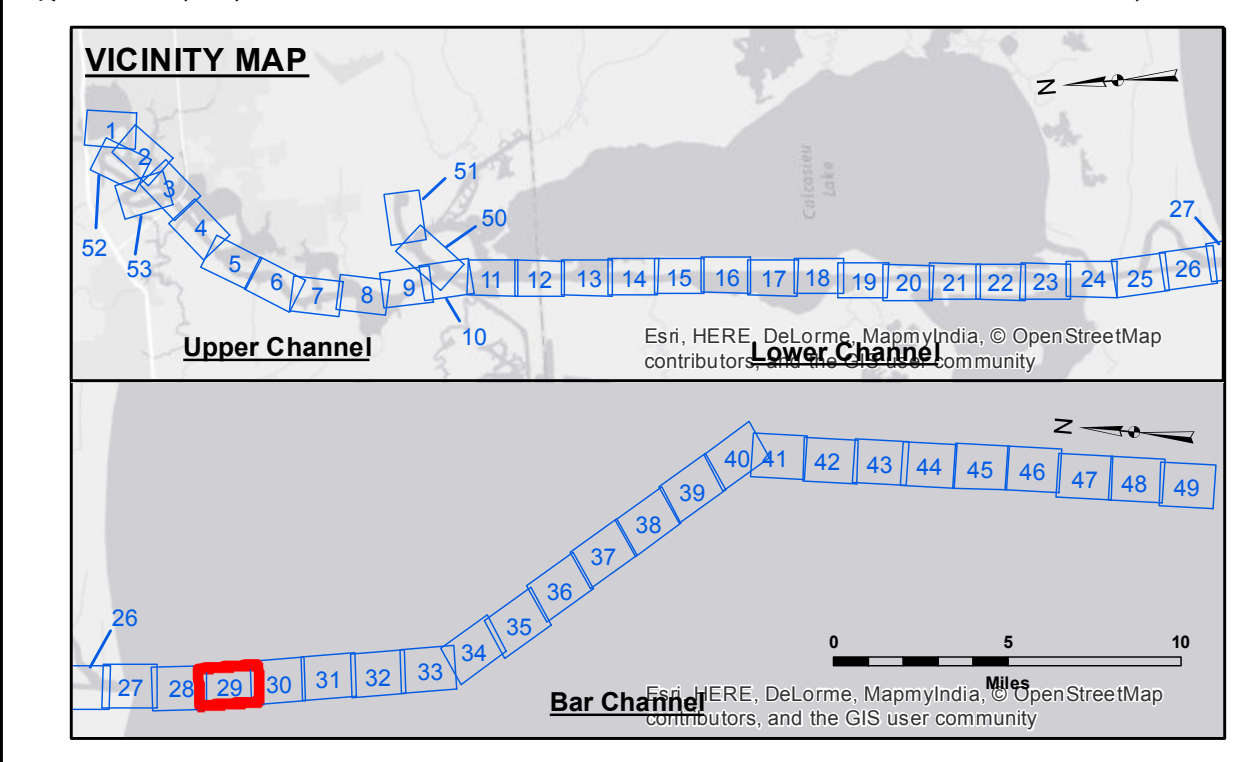
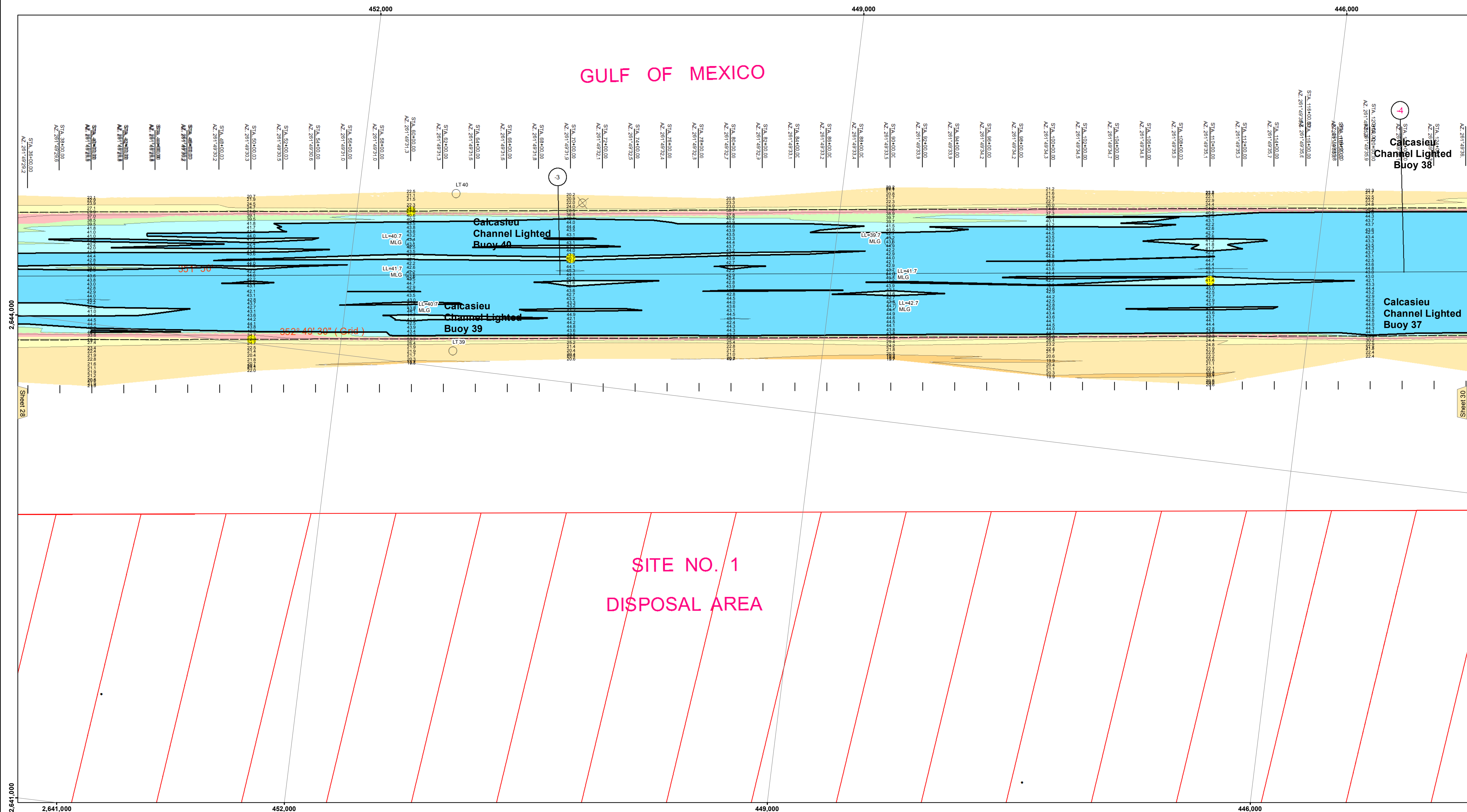


Distribution Liability: The data represents the results of data collection/processing for a specific US Army Corps of Engineers project. It is only valid for its intended use, control, time and accuracy specifications. The user is responsible for the results and any application of the data for other than its intended purpose. Data Constraints: Hydrographic survey data is subject to change rapidly due to several factors including but not limited to dredging, sedimentation, and other channel changes. The user is responsible for the hydrographic conditions when developing after the date of the survey. The information depicted on this map represents the results of a survey and is not to be considered a representation of the general condition existing at that time.

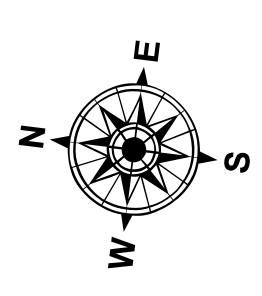
Table with columns: Submitted, Surveyed By (SR, JH), Plotted By (AJO), Checked By (TF), Recommended (Chief, Survey Section), Approved (Chief, Waterways Maintenance Section)

CALCASIEU SHIP CHANNEL BAR SHEET 29 CR_29_BAR_20150519 19 May 2015

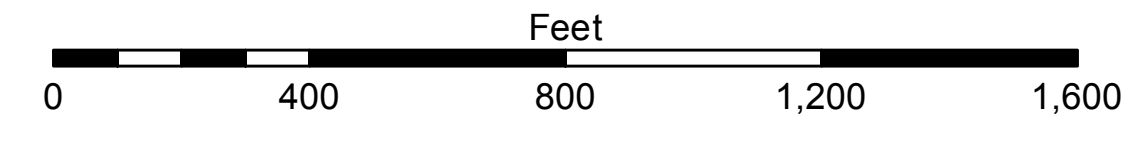
Sheet Reference Number 29 of 53



LEGEND table with symbols for Federal Navigation Channel, Cable Area, Borrow Area, Shoalest Sounding, Beacon, Red Navigation Buoy, Green Navigation Buoy, Placement Area, Anchorage Area, Obstruction Point, Wrecks-Submerged, and Project Depth Contour.



Gage Reading: CAMERON: 3.3 MLG
Sea Conditions: CALM
Vessel Name: M/V TECHE
Survey Type: CONDITION
Sounding Frequency***: LOW



NOTES: Horizontal Coordinate System: North American Datum of 1983 (NAD83), projected to the State Plane Coordinate System (SPCS), Louisiana South Zone. Vertical Datum: Soundings are shown in feet and indicate depths below Mean Low Gull Datum (MLG). Distances on the Calcasieu River are shown at 1 mile intervals. The location of navigation aids are based on and provided by the U.S. Coast Guard and USACE survey crews. 2010 Aerial Photography data source: NAIP. Reference is N.O.A. Navigation Chart No. 11339. *** Shoalest Sounding per Quarter per Reach. *** High frequency (200 kHz) survey data represents the first signal return at a sounding location and will include suspended solids, known as "fluff", if present.