

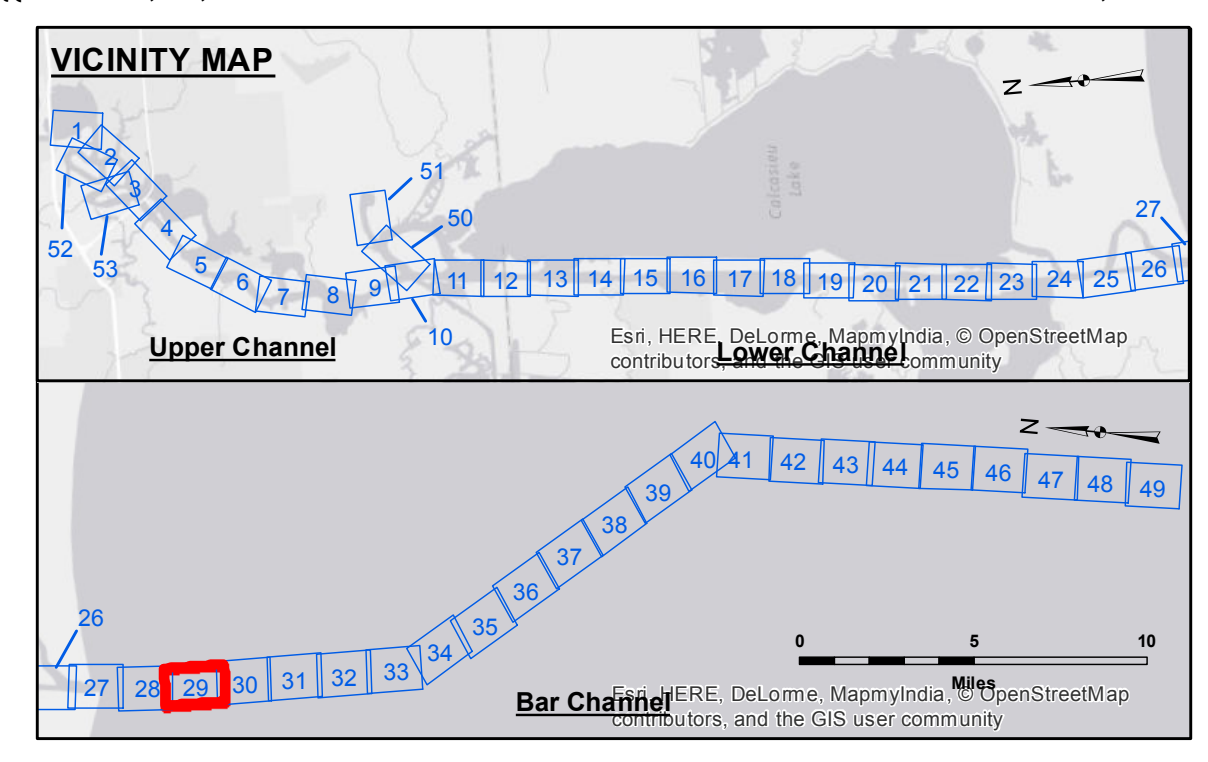
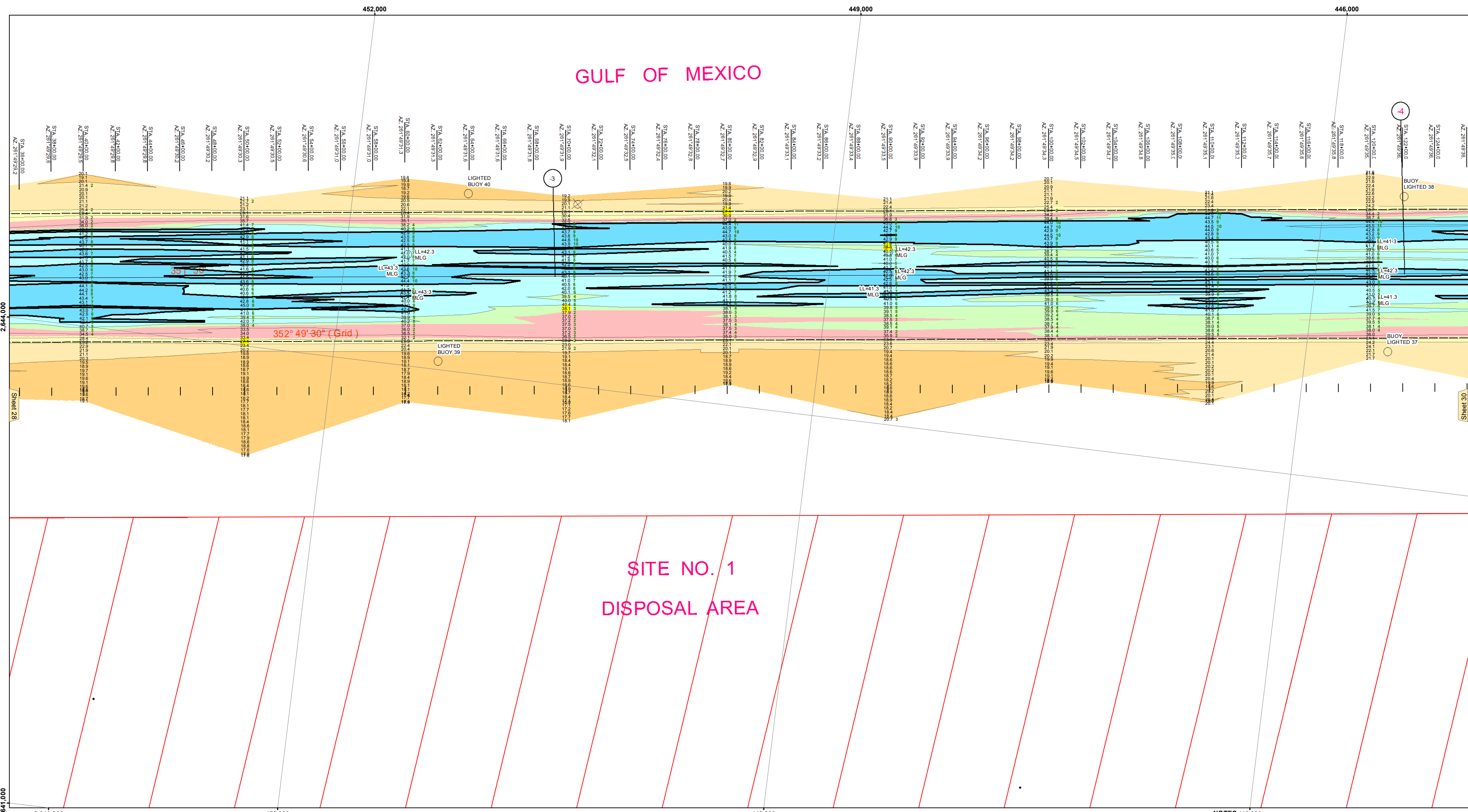


Distribution Liability: The data represents the results of data collection... The user is responsible for the results... Application of the data for other than its intended purpose... DMR Constraints: Hydrographic survey data is subject to change... The user is responsible for the results of the data... The information depicted on this map represents the results of a... to represent the general condition existing at that time.

Table with columns: Submitted, Plotted By, Checked By. Values: SP-SK, AO, AO.

U.S. ARMY CORPS OF ENGINEERS NEW ORLEANS DISTRICT. CALCASIEU SHIP CHANNEL BAR SHEET 29 CR_29_BAR_20170915_CS 15 September 2017

Sheet Reference Number 29 of 53. Revisions: 1.13-20160811



LEGEND: Federal Navigation Channel, Cable Area, Placement Area, Anchorage Area, Obstruction Point, Wrecks-Submerged, Fluff Thickness (feet)*, Shoalest Sounding**, Beacon, General, Red Navigation Buoy, Green Navigation Buoy, Depth Contours (-15' and above to -42' and below).

NOTES: Horizontal Coordinate System: North American Datum of 1983 (NAD83), projected to the State Plane Coordinate System (SPCS), Louisiana South Zone. Vertical Datum: CAMERON: 3.75 MLG. Gage Reading: CHOP. Vessel Name: M/V TECHE. Survey Type: CONDITION. Sounding Frequency: LOW.

Distances on the Calcasieu River are shown at 1 mile intervals. The location of navigation aids are based on and provided by the U.S. Coast Guard and USACE survey crews. 2015 Aerial Photography data source: NAIP. Reference is N.O.A.A. Navigation Chart No. 11339. * Difference between high and low frequency elevations where greater than 1.0'. ** Shoalest Sounding per Quarter per Reach. *** High frequency (200 kHz) survey data represents the first signal return at a sounding location and will include suspended solids, known as "fluff", if present.