



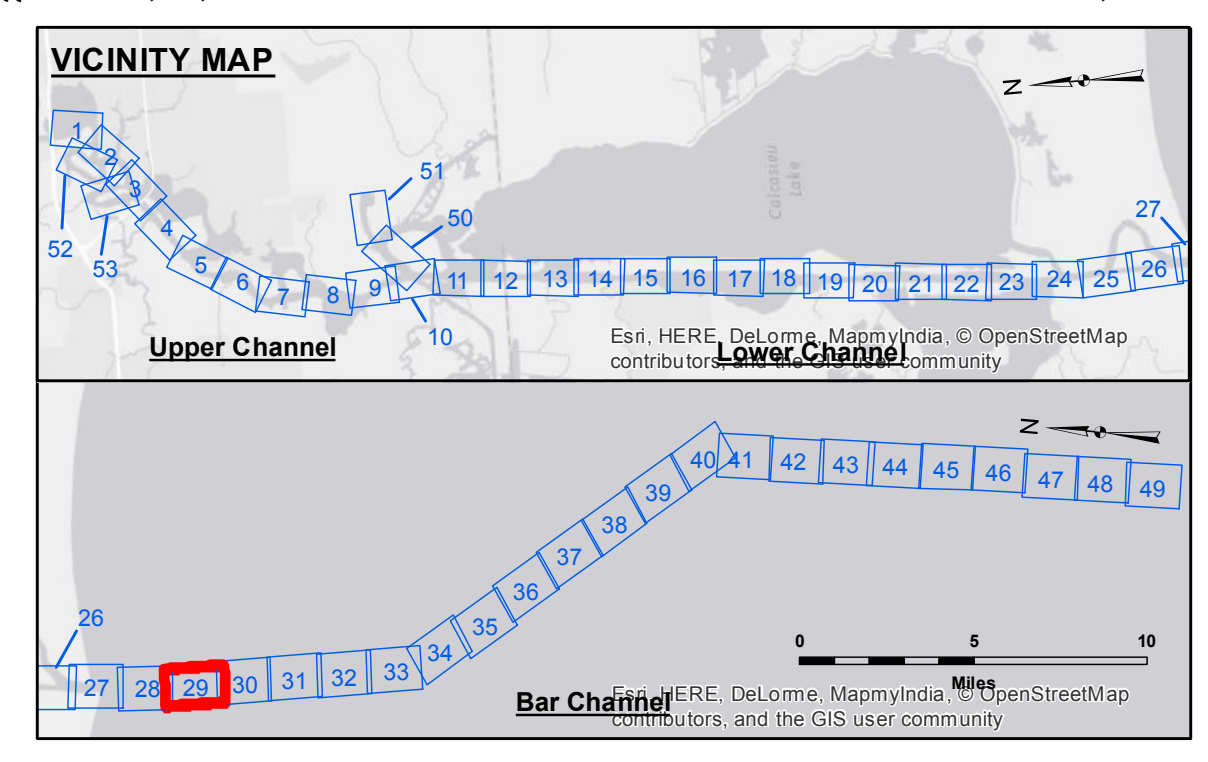
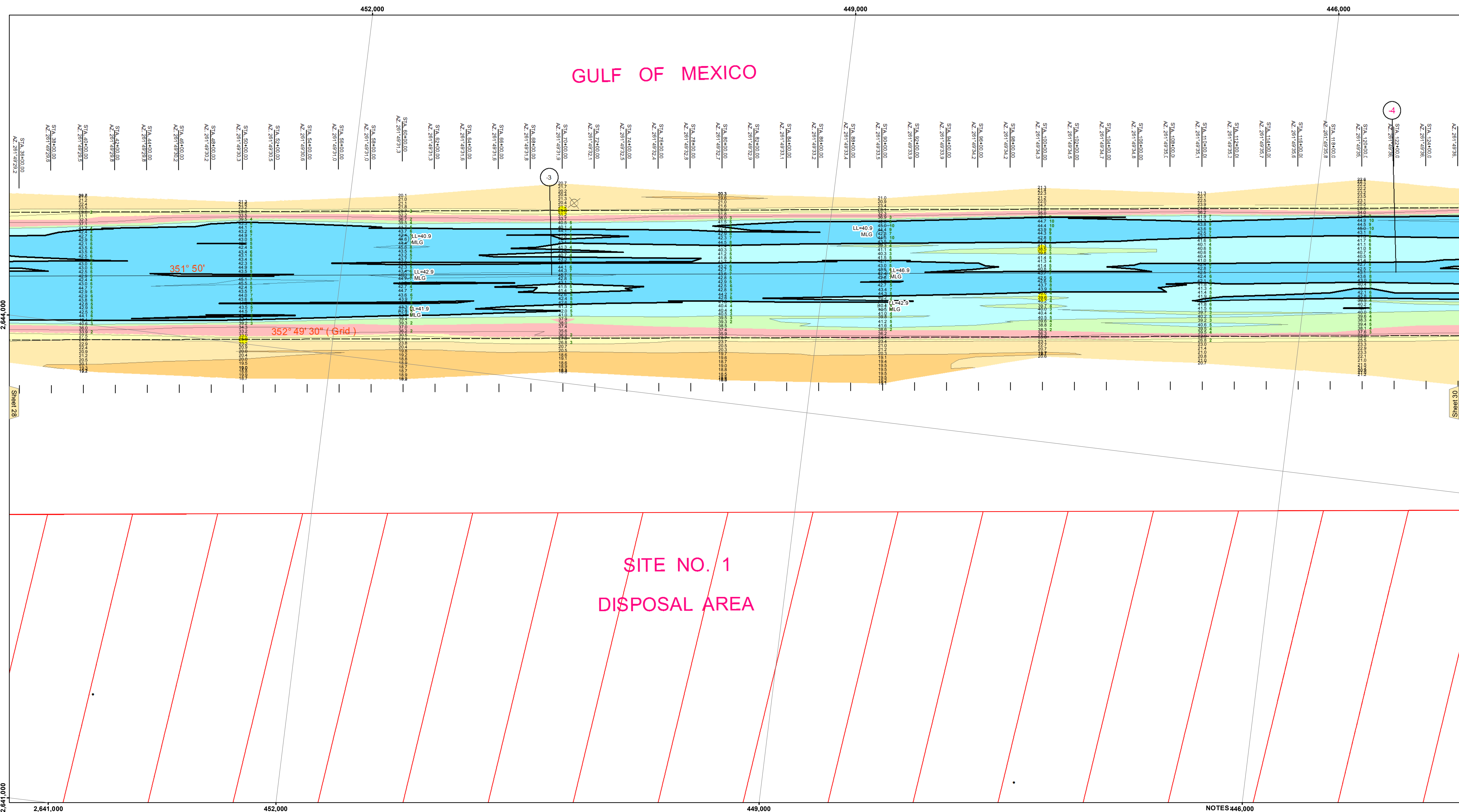
Distribution Liability: The data represents the results of data collection performed for a specific US Army Corps of Engineers project. It is only valid for its intended use, control, time and accuracy specifications. The user is responsible for the results of any application of the data for other than its intended purpose. Data Constants: Hydrographic survey data is subject to change rapidly due to several factors including but not limited to changing bathymetry, sedimentation, and other factors. The user is responsible for the hydrographic conditions when developing the data of the project. Internal use. Product maintainers should not rely solely upon this information.

Access Constraints: The United States Government furnishes these data and the recipient accepts and uses them with the express understanding that the data are not to be used for any purpose other than that for which they were provided, and that the data are not to be used, expressed, or implied concerning the accuracy, completeness, reliability, usability or suitability for any particular purpose of the recipient. The recipient may not transfer the data to others without the express written approval of the United States Government. The recipient may not transfer these data to others without also transferring this Disclaimer. The information depicted on this map represents the results of a survey conducted in accordance with the standards of the United States Coast and Geodetic Survey. The information is not to be used for any purpose other than that for which it was provided. The recipient may not transfer these data to others without also transferring this Disclaimer. The information depicted on this map represents the results of a survey conducted in accordance with the standards of the United States Coast and Geodetic Survey. The information is not to be used for any purpose other than that for which it was provided. The recipient may not transfer these data to others without also transferring this Disclaimer.

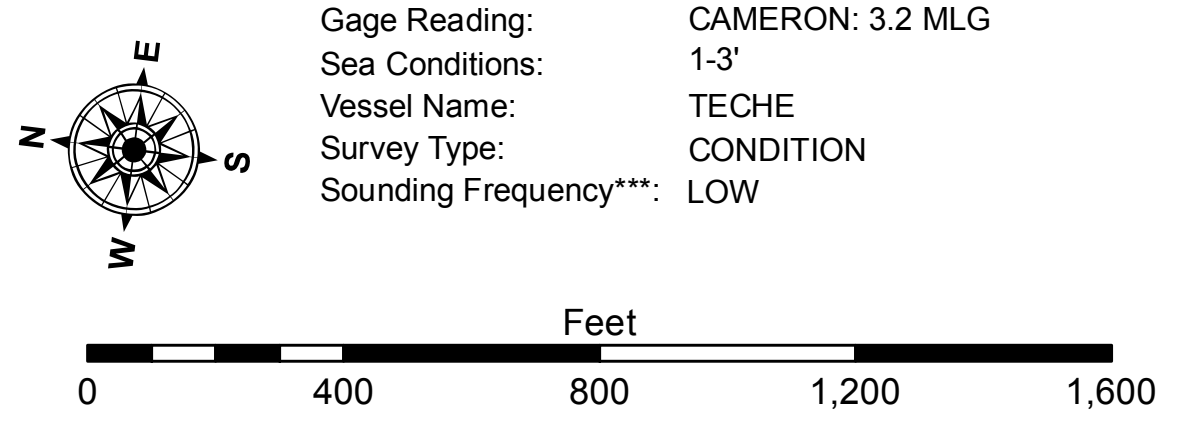
U.S. ARMY CORPS OF ENGINEERS NEW ORLEANS DISTRICT. Surveyed By: SR, JH. Plotted By: AO. Checked By: AO. Recommended: Chief, Survey Section. Approved: Chief, Waterways Maintenance Section.

CALCASIEU SHIP CHANNEL BAR SHEET 29 CR_29_BAR_20170919_CS 19 September 2017

Sheet Reference Number 29 of 53. Revisions: 1.13-20160811



LEGEND table with symbols for Federal Navigation Channel, Cable Area, Placement Area, Anchorage Area, Obstruction Point, Wrecks-Submerged, Fluff Thickness, Shoalest Sounding, Beacons, Navigation Buoys, and Depth Contours.



NOTES: Horizontal Coordinate System: North American Datum of 1983 (NAD83), projected to the State Plane Coordinate System (SPCS), Louisiana South Zone. Vertical Datum: Soundings are shown in feet and indicate depths below Mean Low Gulf Datum (MLG). Distances on the Calcasieu River are shown at 1 mile intervals. 2015 Aerial Photography data source: NAIP. Reference is N.O.A.A. Navigation Chart No. 11339.