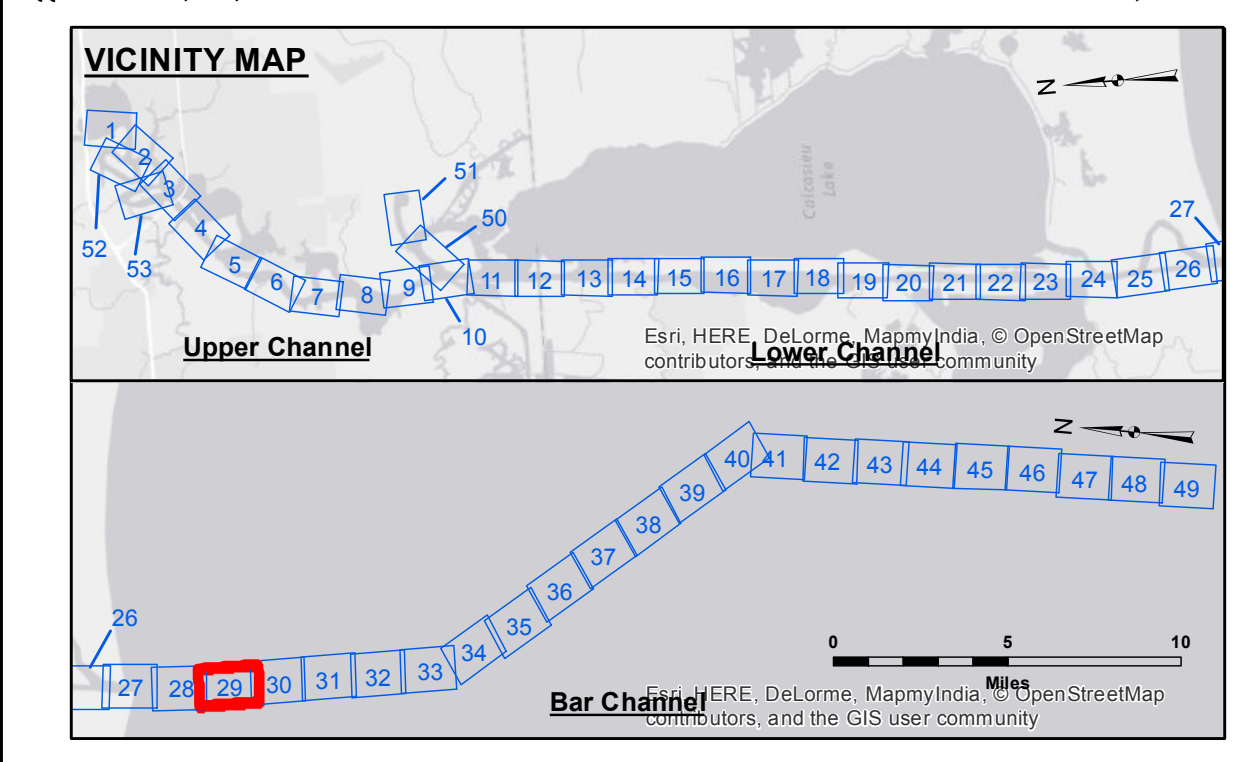
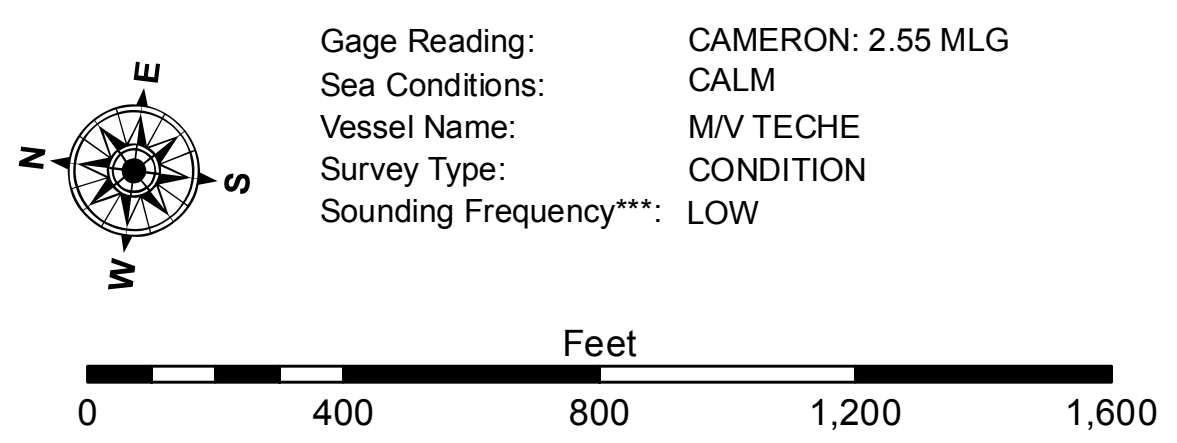


GULF OF MEXICO

SITE NO. 1
DISPOSAL AREA



LEGEND			
	Federal Navigation Channel		Cable Area
	Federal Navigation Center Line		Placement Area
	As-built Pipeline/Cable		Anchorage Area
	Unconfirmed Pipeline/Cable		Obstruction Point
	Project Depth Contour		Wrecks-Submerged
	Fluff Thickness (feet)*		Shoalest Sounding**
	Beacon, General		Red Navigation Buoy
	Green Navigation Buoy		Red Navigation Buoy



NOTES

Horizontal Coordinate System: North American Datum of 1983 (NAD83), projected to the State Plane Coordinate System (SPCS), Louisiana South Zone. Distance units in U.S. Survey Feet.

Vertical Datum: Soundings are shown in feet and indicate depths below Mean Low Gulf Datum (MLG). Datum Relationships for gage 73650 as of December 2013: 0.0' NAVD88 (2009.55) = 1.3' MLLW = 2.3' MLG or 0.0' MLLW = 1.0' MLG

Distances on the Calcasieu River are shown at 1 mile intervals.

The location of navigation aids are based on and provided by the U.S. Coast Guard and USACE survey crews.

2015 Aerial Photography data source: NAIP

Reference is N.O.A.A. Navigation Chart No. 11339.

* Difference between high and low frequency elevations where greater than 1.0'.

** Shoalest Sounding per Quarter per Reach.

*** High frequency (200 kHz) survey data represents the first signal return at a sounding location and will include suspended solids, known as "fluff", if present. Low frequency (20 kHz) survey data normally penetrates through this "fluff" layer to depict elevations of consolidated bottom material. Low frequency accuracies may vary depending on channel conditions and fathometer settings.

DISCLAIMER

The United States Government furnishes these data and the recipient accepts and uses them with the express understanding that the data are not warranted for any purpose other than that for which they were prepared, and that the user is responsible for the accuracy, completeness, reliability, usability or suitability for any particular purpose of the data. These data are provided as a service to the user and are not to be used for any purpose other than that for which they were prepared. The user is responsible for the accuracy, completeness, reliability, usability or suitability for any particular purpose of the data. The user is responsible for the accuracy, completeness, reliability, usability or suitability for any particular purpose of the data. The user is responsible for the accuracy, completeness, reliability, usability or suitability for any particular purpose of the data.

U.S. ARMY CORPS OF ENGINEERS NEW ORLEANS DISTRICT		
Submitted:	Surveyed By: SP-SR	Plotted By: MS
Recommended:	Checked By: MS	Checked By: MS
Approved:	Chief, Waterways Maintenance Section	

CALCASIEU SHIP CHANNEL
BAR SHEET 29
CR_29_BAR_20170923_CS
23 September 2017

Sheet Reference Number
29 of 53