



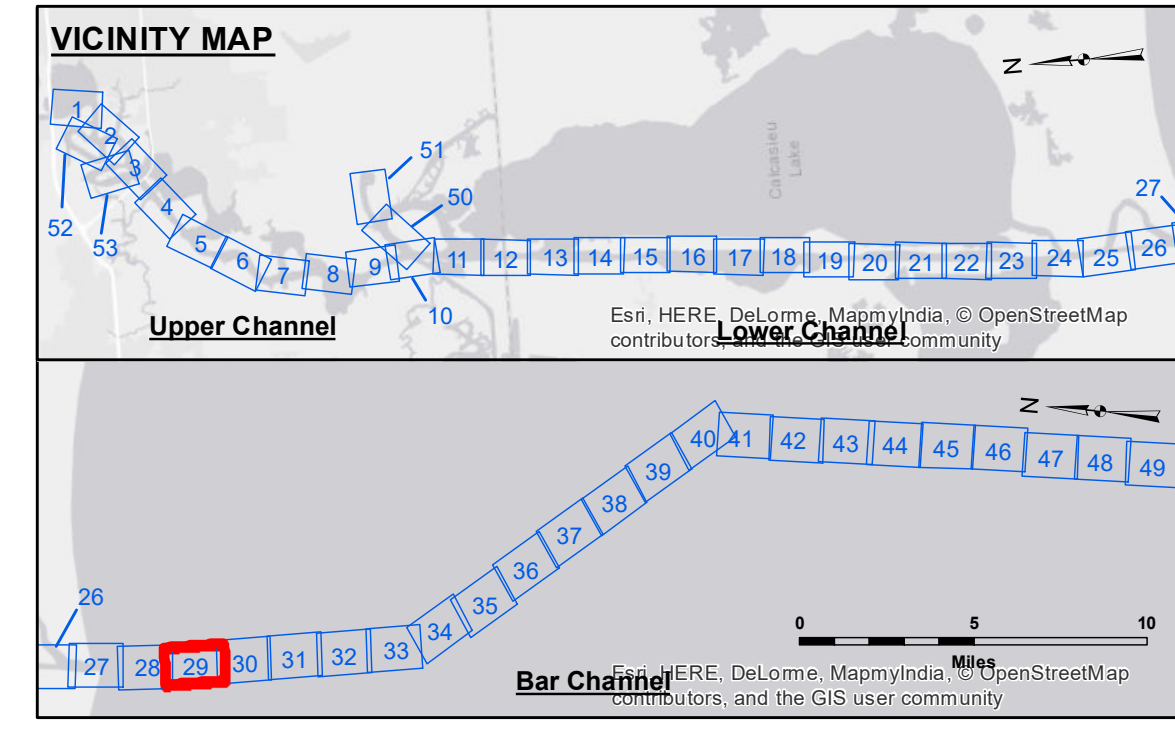
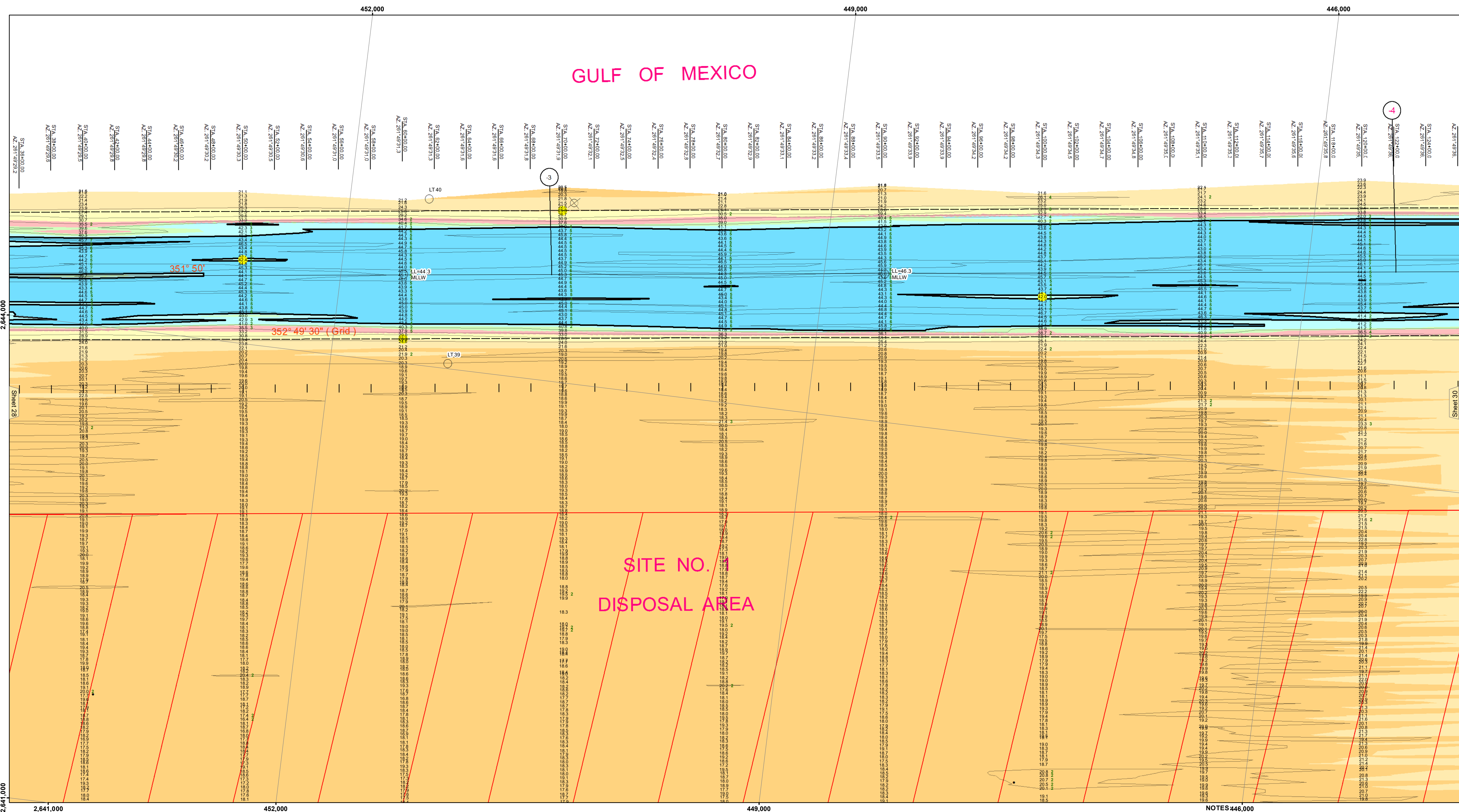
Access to this information is provided for informational purposes only. The user is responsible for the accuracy, completeness, and reliability of the information. The user is not to be held liable for any damages or losses resulting from the use of this information. The information depicted on this map represents the results of a survey conducted in accordance with the standards of the United States Army Corps of Engineers. The information is not to be used for any purpose other than that for which it was collected. The user is not to be held liable for any damages or losses resulting from the use of this information. The information depicted on this map represents the results of a survey conducted in accordance with the standards of the United States Army Corps of Engineers. The information is not to be used for any purpose other than that for which it was collected.

Table with 3 columns: Surveyed By (JLA, JDH), Plotted By (BD), Checked By (AC). Includes U.S. Army Corps of Engineers New Orleans District and Chief, Waterways Maintenance Section.

CALCASIEU SHIP CHANNEL BAR SHEET 29 CR_29_BAR_20180613_AD 13 June 2018

Sheet Reference Number 29 of 53

Revision Number: 3.13-20160811



LEGEND section containing symbols for Federal Navigation Channel, Cable Area, Placement Area, Anchorage Area, Obstruction Point, Wrecks-Submerged, Fluff Thickness, Shoalest Sounding, Beacons, Navigation Buoys, and Depth Contours.

Technical specifications including Gage Reading (CAMERON: 1.71 MLLW), Sea Conditions (2-3'), Vessel Name (M/V BURRWOOD), Survey Type (AD), Sounding Frequency (LOW), and a graphical scale bar in feet.

NOTES section detailing the Horizontal Coordinate System (North American Datum of 1983), Vertical Datum (Mean Lower Low Water Datum), and other survey-related information.