

US Army Corps of Engineers District: CEMVN

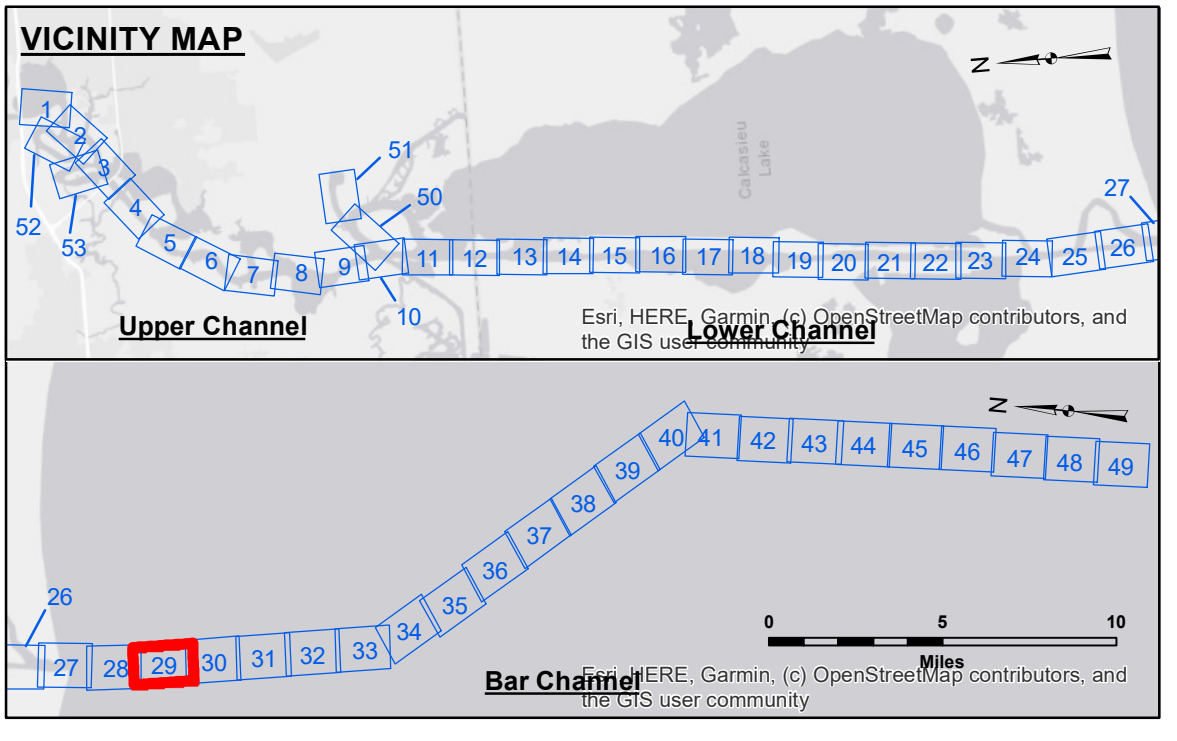
Access/Remarks: The United States Government furnishes these data and the recipient accepts and uses them with the express understanding that the data are not warranted for accuracy, completeness, reliability, usability or suitability for any particular purpose of the recipient. The user is responsible for the results of any use of the data. The recipient agrees to accept responsibility for changes in the data. The recipient agrees to accept responsibility for changes in the data. The recipient agrees to accept responsibility for changes in the data. The recipient agrees to accept responsibility for changes in the data.

U.S. ARMY CORPS OF ENGINEERS NEW ORLEANS DISTRICT	
Submitted:	RYLAND/ADAMS
Recommended:	AO
Checked By:	AO

CALCASIEU SHIP CHANNEL
BAR SHEET 29
CR_29_BAR_20201112_CS
12 November 2020

Sheet Reference Number
29 of 53

Revision Number:
 4.1-2019115



LEGEND

- Federal Navigation Channel
- Federal Navigation Center Line
- As-built Pipeline/Cable
- Unconfirmed Pipeline/Cable
- Project Depth Contour
- Cable Area
- Placement Area
- Anchorage Area
- ⊗ Obstruction Point
- ✶ Wrecks-Submerged
- 3 Fluff Thickness (feet)*
- Shoalest Sounding**
- ☆ Beacon, General
- ◆ Red Navigation Buoy
- ◇ Green Navigation Buoy
- 16' and above
- 16' to -21'
- 21' to -26'
- 26' to -33'
- 33' to -39'
- 39' to -41'
- 41' to -43'
- 43' and below

NOTES

Horizontal Coordinate System:
 North American Datum of 1983 (NAD83), projected to the State Plane Coordinate System (SPCS), Louisiana South Zone. Distance units in U.S. Survey Feet.

Vertical Datum:
 Soundings are shown in feet and indicate depths below Mean Lower Low Water Datum (MLLW). Datum Relationships for gage 73650 as of December 2013:
 0.0' NAVD88 (2009.55) = 1.3' MLLW = 2.3' MLG or 0.0' MLLW = 1.0' MLG

Distances on the Calcasieu River are shown at 1 mile intervals.

The location of navigation aids are based on and provided by the U.S. Coast Guard and USACE survey crews.

2015 Aerial Photography data source: NAIP
 Reference is N.O.A.A. Navigation Chart No. 11339.

* Difference between high and low frequency elevations where greater than 1.0'.
 ** Shoalest Sounding per Quarter per Reach.

*** High frequency (200 kHz) survey data represents the first signal return at a sounding location and will include suspended solids, known as "fluff", if present. Low frequency (20 kHz) survey data normally penetrates through this "fluff" layer to depict elevations of consolidated bottom material. Low frequency accuracies may vary depending on channel conditions and fathometer settings.

Gage Reading: CAMERON: 2.5 MLG
 Sea Conditions: CALM
 Vessel Name: M/V LAFOURCHE
 Survey Type: CONDITION
 Sounding Frequency***: LOW

Scale: 0 400 800 1,200 1,600 Feet