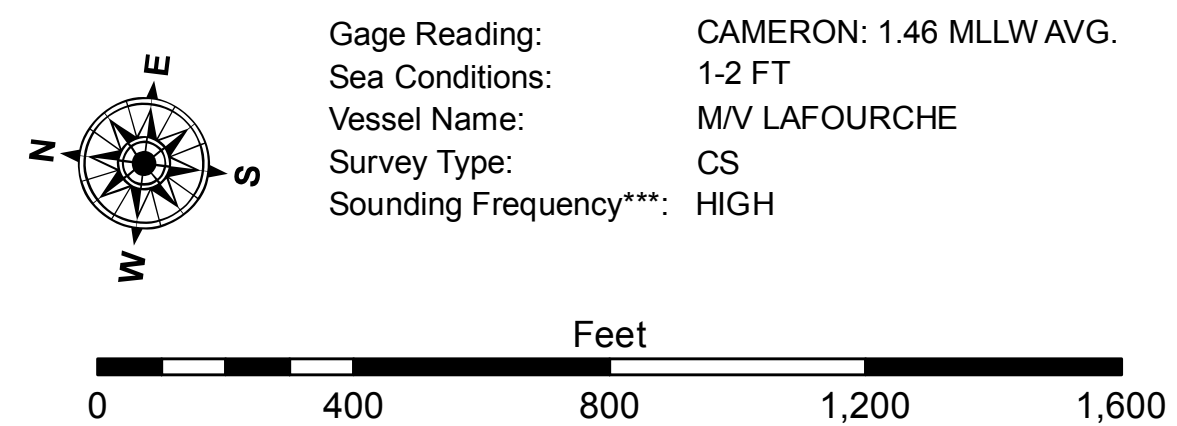


LEGEND

--- Federal Navigation Channel	○ Cable Area	3 Fluff Thickness (feet)*	-16' and above
— Federal Navigation Center Line	□ Placement Area	● Shoalest Sounding**	-21' to -26'
— As-built Pipeline/Cable	□ Anchorage Area	★ Beacon, General	-26' to -33'
... Unconfirmed Pipeline/Cable	⊠ Obstruction Point	★ Red Navigation Buoy	-33' to -39'
— Project Depth Contour	⚓ Wrecks-Submerged	★ Green Navigation Buoy	-39' to -41'
			-41' to -43'
			-43' and below



NOTES:
 Horizontal Coordinate System: North American Datum of 1983 (NAD83), projected to the State Plane Coordinate System (SPCS), Louisiana South Zone. Distance units in U.S. Survey Feet.
 Vertical Datum: Soundings are shown in feet and indicate depths below Mean Lower Low Water Datum (MLLW). Datum Relationships for page 73650 as of December 2013: 0.0' NAVD88 (2009.55) = 1.3' MLLW = 2.3' MLG or 0.0' MLLW = 1.0' MLG. Distances on the Calcasieu River are shown at 1 mile intervals.
 The location of navigation aids are based on and provided by the U.S. Coast Guard and USACE survey crews.
 2015 Aerial Photography data source: NAIP. Reference is N.O.A. Navigation Chart No. 11339.
 * Difference between high and low frequency elevations where greater than 1.0'.
 ** Shoalest Sounding per Quarter per Reach.
 *** High frequency (200 kHz) survey data represents the first signal return at a sounding location and will include suspended solids, known as "fluff", if present. Low frequency (20 kHz) survey data normally penetrates through this "fluff" layer to depict elevations of consolidated bottom material. Low frequency accuracies may vary depending on channel conditions and fathometer settings.

US Army Corps of Engineers District: CEMVW

DISCLAIMER: The United States Government furnishes this data as a service to the public and does not warrant, represent, or guarantee the accuracy, reliability, or availability of the data for any purpose other than that for which it was prepared. The user is responsible for the results of any use of the data. The user agrees to hold the United States Government harmless for any use of the data for any purpose other than that for which it was prepared. The user agrees to hold the United States Government harmless for any use of the data for any purpose other than that for which it was prepared. The user agrees to hold the United States Government harmless for any use of the data for any purpose other than that for which it was prepared.

Submitted:	Surveyed By:
Recommended:	DJ/SPS
Accepted:	Field By:
	BD
	Checked By:
	AO

U.S. ARMY CORPS OF ENGINEERS
NEW ORLEANS DISTRICT

CALCASIEU SHIP CHANNEL
BAR SHEET 30
CR_30_BARX_20201214_CS
14 December 2020

Sheet Reference Number
30 of 53

Revision Number:
 41-20181165