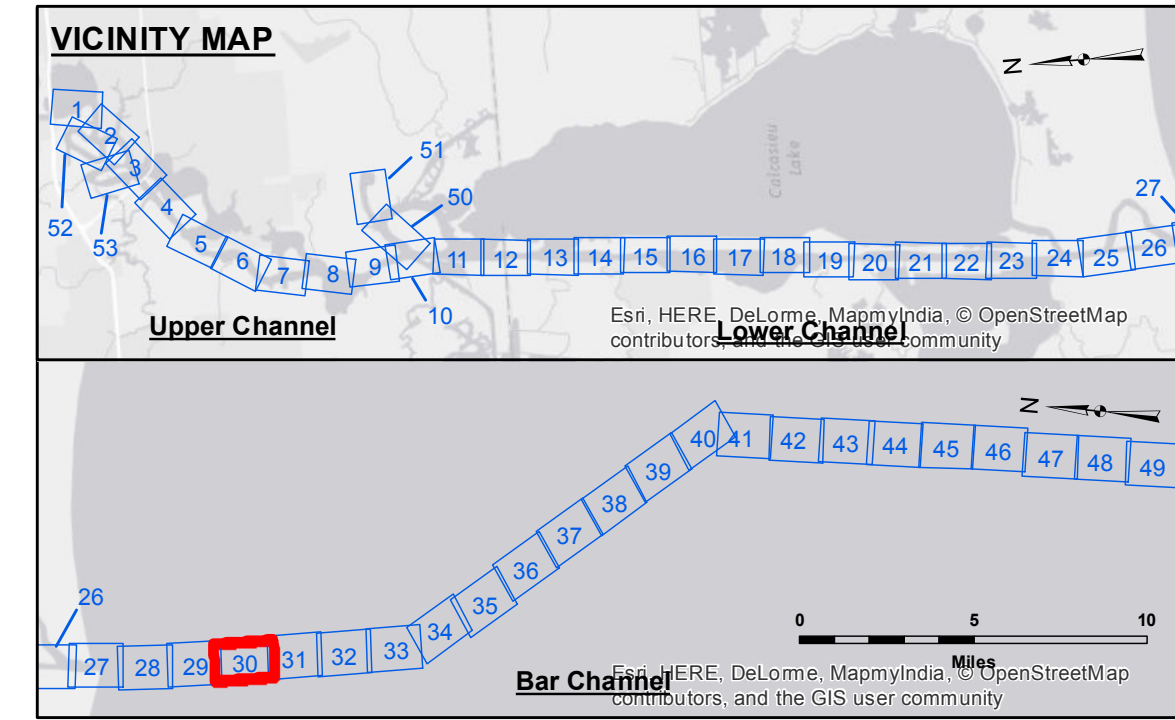
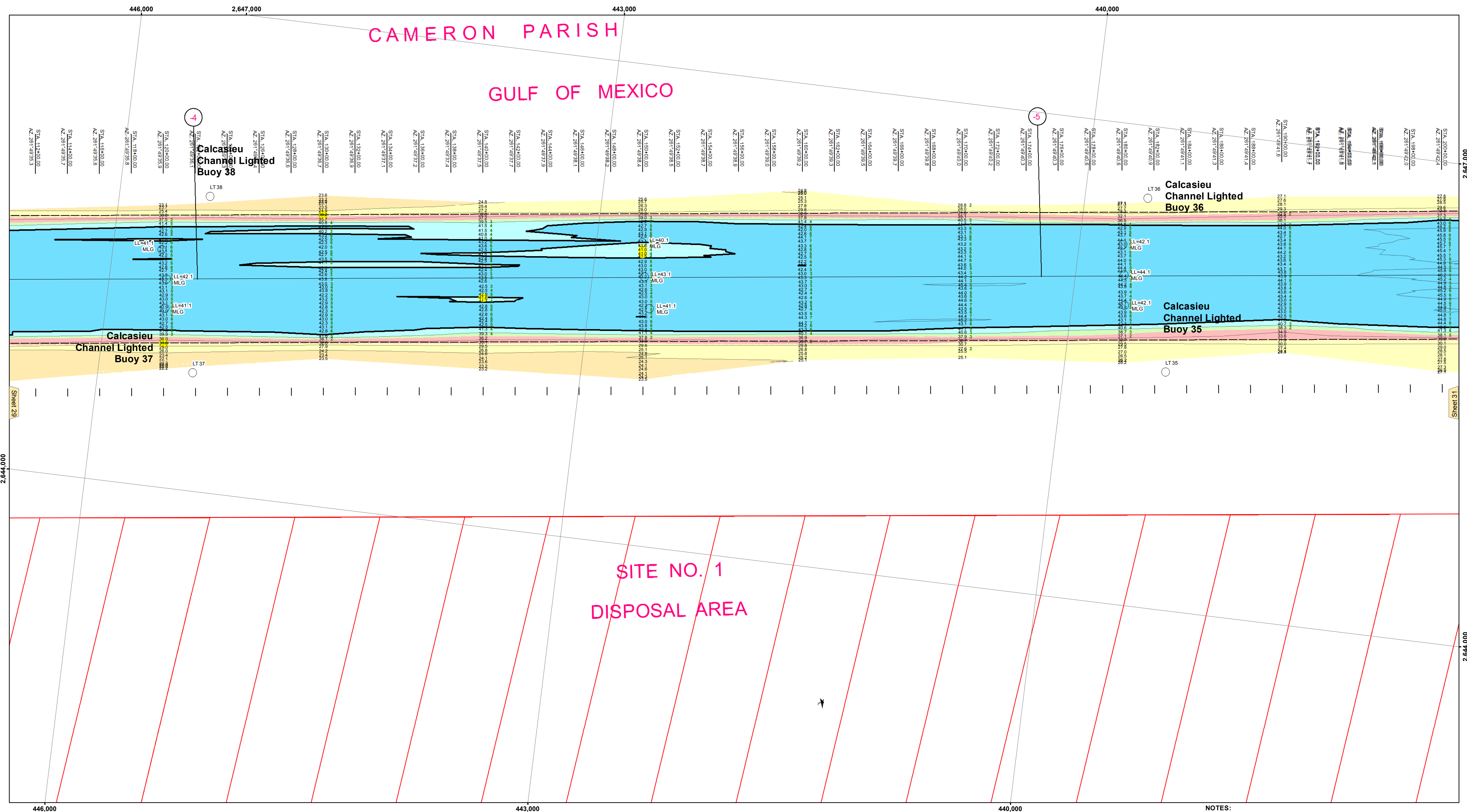


# CAMERON PARISH GULF OF MEXICO



**LEGEND**

--- Federal Navigation Channel	● Cable Area	3 Fluff Thickness (feet)*	■ -15' and above
— Federal Navigation Center Line	□ Placement Area	● Shoalest Sounding**	■ -15' to -20'
— As-built Pipeline/Cable	⊗ Anchorage Area	★ Beacon, General	■ -20' to -25'
..... Unconfirmed Pipeline/Cable	⊗ Obstruction Point	◆ Red Navigation Buoy	■ -25' to -32'
— Project Depth Contour	✈ Wrecks-Submerged	◆ Green Navigation Buoy	■ -32' to -38'
			■ -38' to -40'
			■ -40' to -42'
			■ -42' and below

**NOTES:**

Horizontal Coordinate System: North American Datum of 1983 (NAD83), projected to the State Plane Coordinate System (SPCS), Louisiana South Zone. Distance units in U.S. Survey Feet.

Vertical Datum: Soundings are shown in feet and indicate depths below Mean Low Gulf Datum (MLG). Datum Relationships for gage 73650 as of December 2013: 0.0' NAVD88 (2009.55) = 1.3' MLLW = 2.3' MLG or 0.0' MLLW = 1.0' MLG

Distances on the Calcasieu River are shown at 1 mile intervals.

The location of navigation aids are based on and provided by the U.S. Coast Guard and USACE survey crews.

2015 Aerial Photography data source: NAIP

Reference is N.O.A.A. Navigation Chart No. 11339.

\* Difference between high and low frequency elevations where greater than 1.0'.  
 \*\* Shoalest Sounding per Quarter per Reach.  
 \*\*\* High frequency (200 kHz) survey data represents the first signal return at a sounding location and will include suspended solids, known as "fluff", if present. Low frequency (20 kHz) survey data normally penetrates through this "fluff" layer to depict elevations of consolidated bottom material. Low frequency accuracies may vary depending on channel conditions and fathometer settings.



**DISCLAIMER**  
 The United States Government furnishes these data and the recipient accepts and uses them with the express understanding that the information is not warranted for any particular purpose of the recipient, and that the recipient shall be held responsible for any use of the information under no liability whatsoever to any person by reason of any use of the information. These data are being provided to the recipient under the terms of the Government's Standard Conditions of Use. The recipient may not transfer these data to others without obtaining the permission of the U.S. Army Corps of Engineers. The information depicted on this map represents the results of a hydrographic survey conducted in accordance with the standards set forth in the U.S. Army Corps of Engineers Manual of Style and Procedure for Hydrographic Surveys. The information is not to be used for any purpose other than that intended by the U.S. Army Corps of Engineers. The information is not to be used for any purpose other than that intended by the U.S. Army Corps of Engineers. The information is not to be used for any purpose other than that intended by the U.S. Army Corps of Engineers.

U.S. ARMY CORPS OF ENGINEERS NEW ORLEANS DISTRICT	
Submitted:	Surveyed By: SJR/JDH
Recommended:	Plotted By: AO
Approved:	Checked By: TF
Chief, Waterways Maintenance Section	

**CALCASIEU SHIP CHANNEL  
 BAR SHEET 30  
 CR\_30\_BAR\_20160630  
 30 June 2016**

**Sheet  
 Reference  
 Number  
 30 of 53**