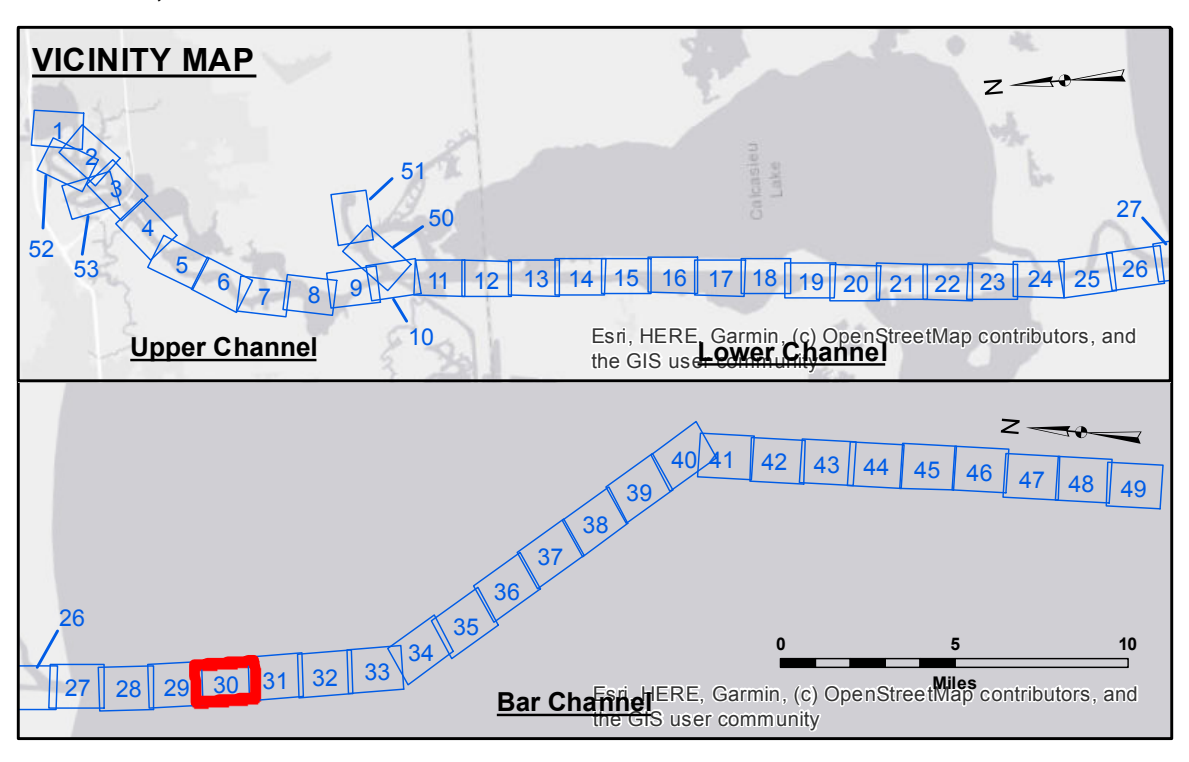


DISCLAIMER
 The information depicted on this map represents the results of a hydrographic survey conducted by the U.S. Army Corps of Engineers. The data is subject to change without notice and is not to be used for purposes other than those intended. The user is responsible for the accuracy, completeness, and reliability of the information derived from this map. The U.S. Army Corps of Engineers does not warrant the accuracy or reliability of the information for any purpose other than that for which it was collected. The user is responsible for the accuracy, completeness, and reliability of the information derived from this map. The U.S. Army Corps of Engineers does not warrant the accuracy or reliability of the information for any purpose other than that for which it was collected.

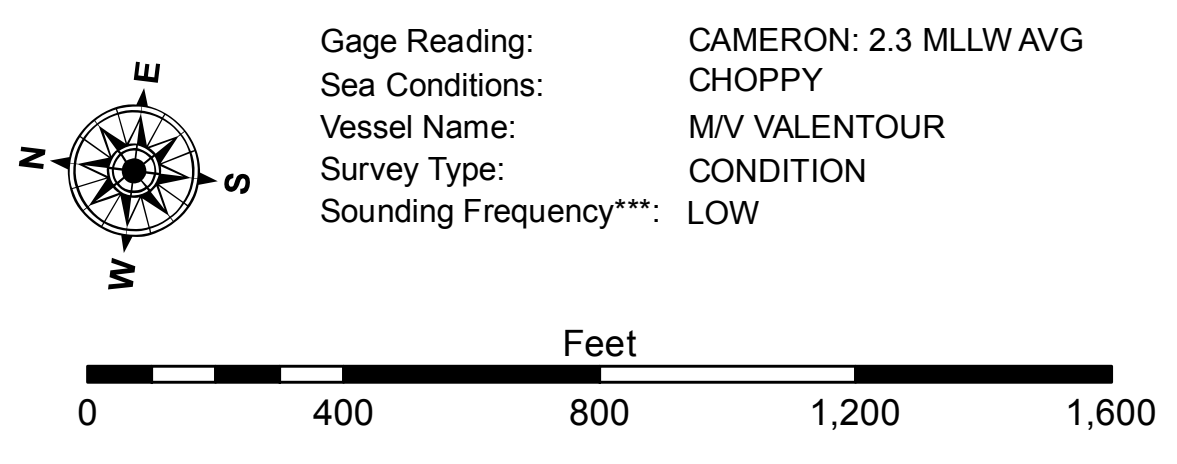
Submitted:	RYLAND/ADAMS
Recommended:	Chief, Survey Section
Approved:	Chief, Waterways Maintenance Section
Surveyed By:	RYLAND/ADAMS
Plotted By:	AO
Checked By:	AO

CALCASIEU SHIP CHANNEL
BAR SHEET 30
CR_30_BAR_20201014_CS_EASTEXT
14 October 2020



LEGEND

Federal Navigation Channel	Cable Area	Fluff Thickness (feet)*	-16' and above
Federal Navigation Center Line	Placement Area	Shoalest Sounding**	-16' to -21'
As-built Pipeline/Cable	Anchorage Area	Beacon, General	-21' to -26'
Unconfirmed Pipeline/Cable	Obstruction Point	Red Navigation Buoy	-26' to -33'
Project Depth Contour	Wrecks-Submerged	Green Navigation Buoy	-33' to -39'
			-39' to -41'
			-41' to -43'
			-43' and below



NOTES:
 Horizontal Coordinate System: North American Datum of 1983 (NAD83), projected to the State Plane Coordinate System (SPCS), Louisiana South Zone. Distance units in U.S. Survey Feet.
 Vertical Datum: Soundings are shown in feet and indicate depths below Mean Lower Low Water Datum (MLLW). Datum Relationships for gage 73650 as of December 2013: 0.0' NAVD88 (2009.55) = 1.3' MLLW = 2.3' MLG or 0.0' MLLW = 1.0' MLG
 Distances on the Calcasieu River are shown at 1 mile intervals.
 The location of navigation aids are based on and provided by the U.S. Coast Guard and USACE survey crews.
 2015 Aerial Photography data source: NAIP
 Reference is N.O.A.A. Navigation Chart No. 11339.
 * Difference between high and low frequency elevations where greater than 1.0'.
 ** Shoalest Sounding per Quarter per Reach.
 *** High frequency (200 kHz) survey data represents the first signal return at a sounding location and will include suspended solids, known as "fluff", if present. Low frequency (20 kHz) survey data normally penetrates through this "fluff" layer to depict elevations of consolidated bottom material. Low frequency accuracies may vary depending on channel conditions and fathometer settings.

Sheet Reference Number
30 of 53
 Revision Number:
 4.1-20191105