



DISCLAIMER
The United States Government hereby disclaims any and all liability for the use of the data contained herein for purposes other than those intended by the Corps of Engineers. The user assumes all liability for any use of the data for purposes other than those intended by the Corps of Engineers. The user assumes all liability for any use of the data for purposes other than those intended by the Corps of Engineers. The user assumes all liability for any use of the data for purposes other than those intended by the Corps of Engineers.

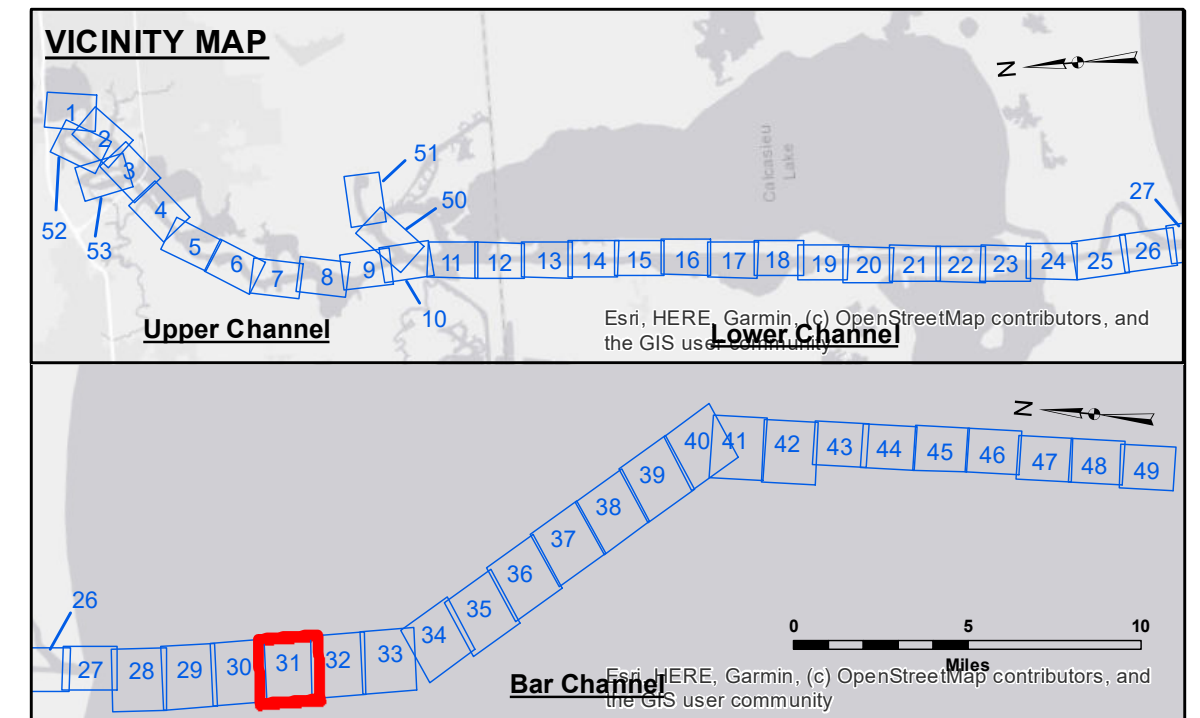
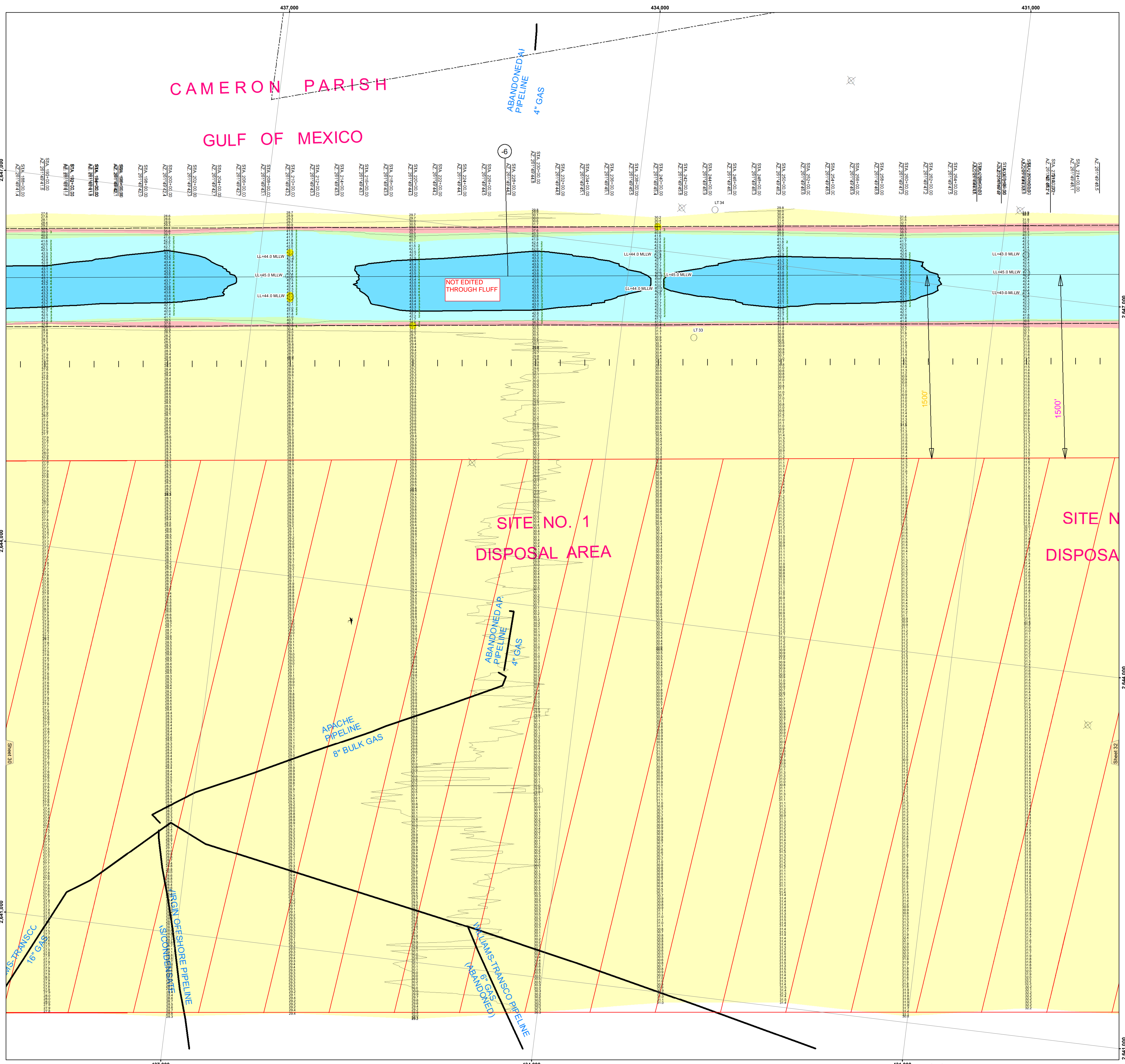
REVISIONS

| Submitted | Checked By |
|-------------|------------|
| JDH, JA | AO |
| Recommended | Checked By |
| AO | AO |

CALCASIEU SHIP CHANNEL
BAR SHEET 31
CR_31_BARX_20190731_CS
31 July 2019

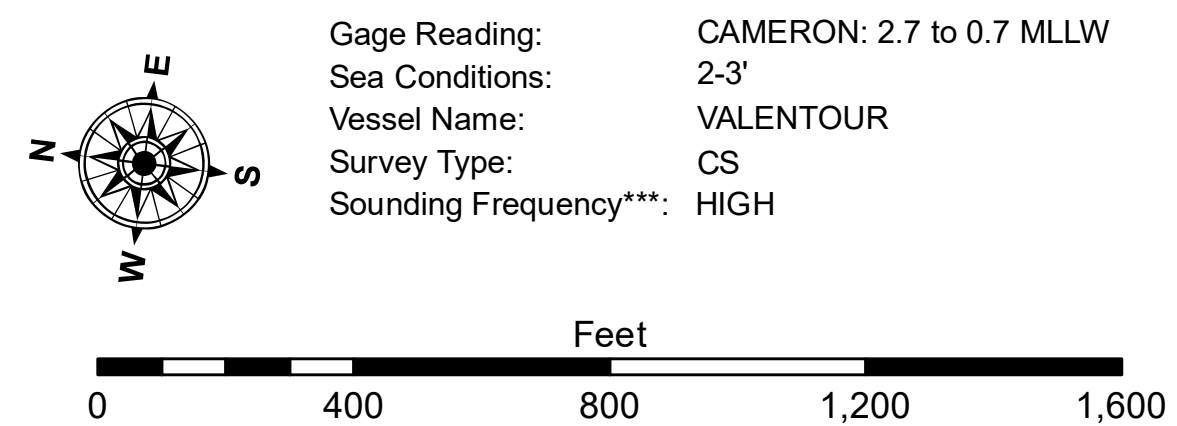
Sheet Reference Number
31 of 53

Revision Number: 42-30197002



LEGEND

| | | | |
|----------------------------------|---------------------|---------------------------|----------------|
| --- Federal Navigation Channel | ○ Cable Area | 3 Fluff Thickness (feet)* | -16' and above |
| — Federal Navigation Center Line | □ Placement Area | ● Shoalest Sounding** | -21' to -26' |
| — As-built Pipeline/Cable | ⊠ Anchorage Area | ★ Beacon, General | -26' to -33' |
| --- Unconfirmed Pipeline/Cable | ⊠ Obstruction Point | ★ Red Navigation Buoy | -33' to -39' |
| — Project Depth Contour | ⚓ Wrecks-Submerged | ★ Green Navigation Buoy | -39' to -41' |
| | | | -41' to -43' |
| | | | -43' and below |



NOTES:
Horizontal Coordinate System:
North American Datum of 1983 (NAD83), projected to the State Plane Coordinate System (SPCS), Louisiana South Zone. Distance units in U.S. Survey Feet.
Vertical Datum:
Soundings are shown in feet and indicate depths below Mean Lower Low Water Datum (MLLW). Datum Relationships for gage 73650 as of December 2013:
0.0' NAVD88 (2009.55) = 1.3' MLLW = 2.3' MLG or 0.0' MLLW = 1.0' MLG
Distances on the Calcasieu River are shown at 1 mile intervals.
The location of navigation aids are based on and provided by the U.S. Coast Guard and USACE survey crews.
2015 Aerial Photography data source: NAIP
Reference is N.O.A. Navigation Chart No. 11339.
* Difference between high and low frequency elevations where greater than 1.0'.
** Shoalest Sounding per Quarter per Reach.
*** High frequency (200 kHz) survey data represents the first signal return at a sounding location and will include suspended solids, known as "fluff", if present. Low frequency (20 kHz) survey data normally penetrates through this "fluff" layer to depict elevations of consolidated bottom material. Low frequency accuracies may vary depending on channel conditions and fathometer settings.