

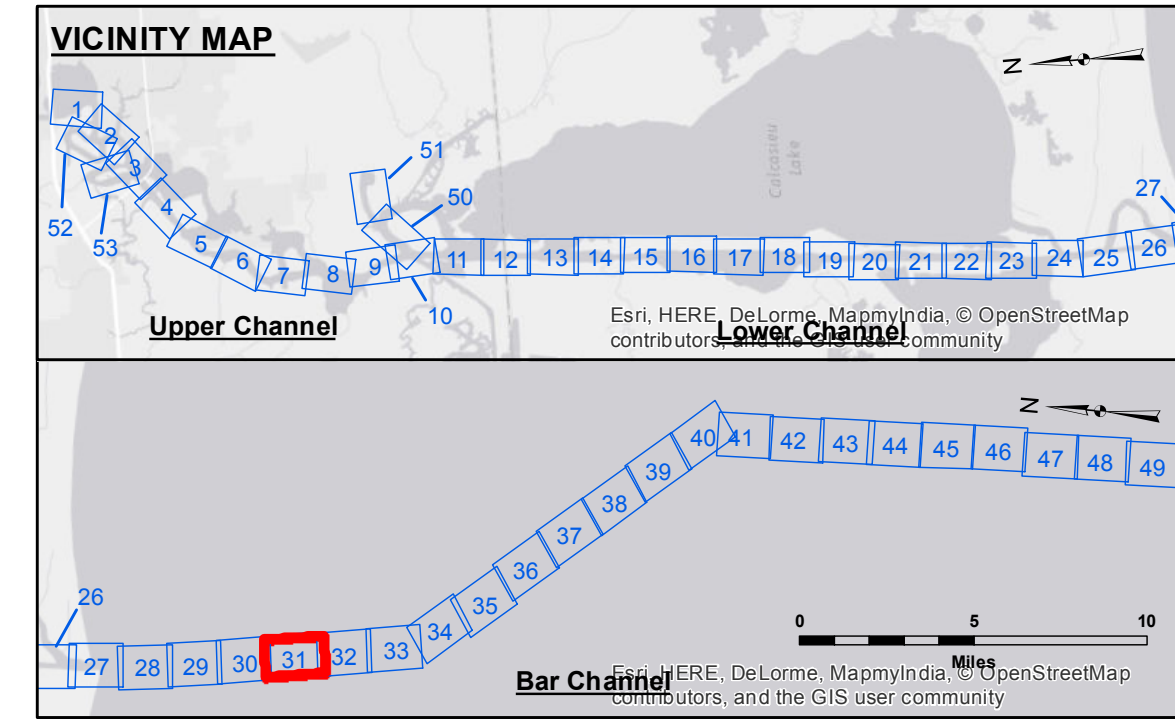
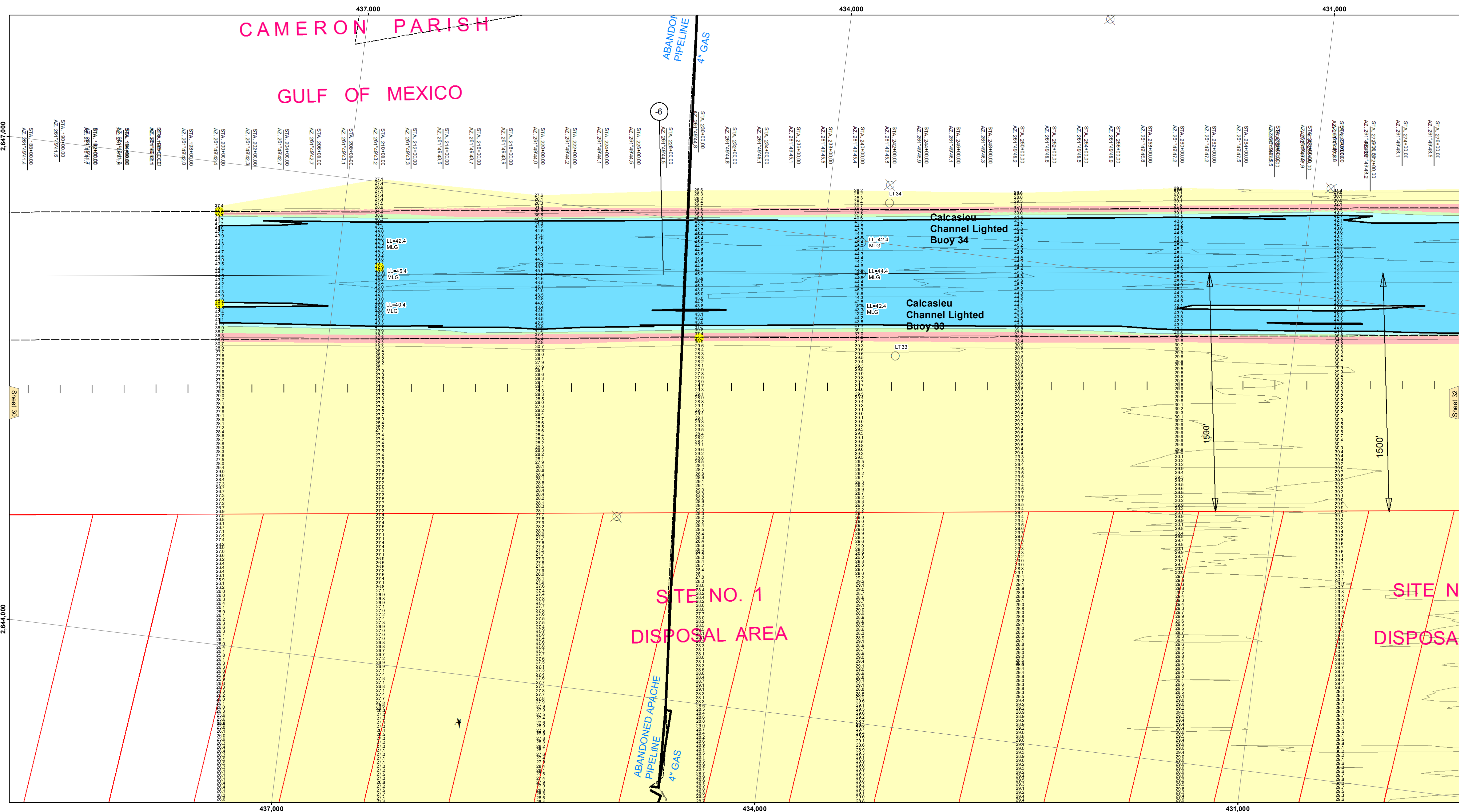


Access to this information is provided for your information only. It is not to be used for any other purpose than that for which it was intended. The user is responsible for the accuracy, completeness, and timeliness of the information. The user is also responsible for the proper use of the information. The information is provided as is, without warranty of any kind, express or implied. The user assumes all liability for any damage or loss resulting from the use of this information. The information is provided for your information only and is not to be used for any other purpose than that for which it was intended.

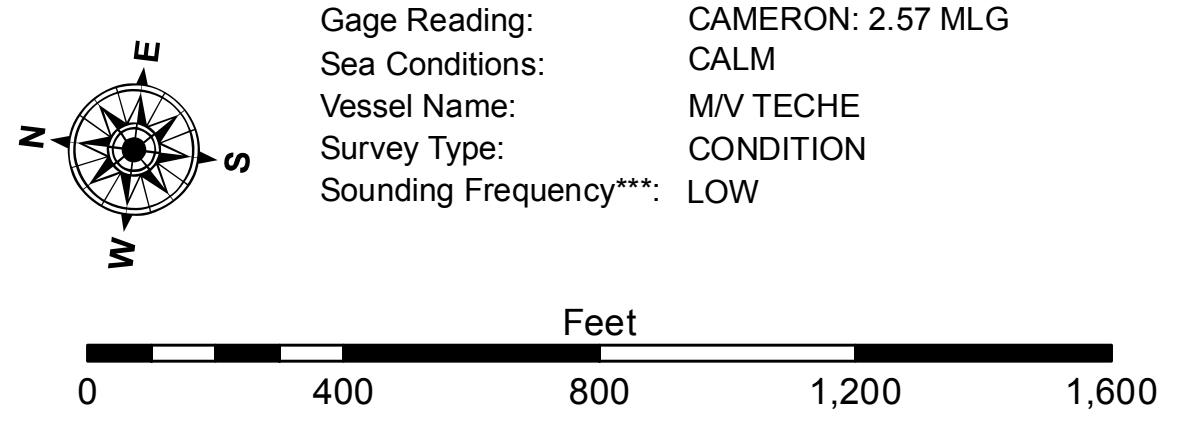
Table with columns: Submitted, Plotted By, Checked By, Surveyed By, Recommended, Chief, Survey Section, Approved, Chief, Waterways Maintenance Section.

CALCASIEU SHIP CHANNEL BAR SHEET 31 CR_31_BAR_20150817 17 August 2015

Sheet Reference Number 31 of 53



LEGEND table with symbols and descriptions: Federal Navigation Channel, Cable Area, Borrow Area, Shoalest Sounding, Beacon, Red Navigation Buoy, Green Navigation Buoy, Placement Area, Anchorage Area, Obstruction Point, Wrecks-Submerged, Project Depth Contour, and depth ranges from -15' to -42' and below.



NOTES: Horizontal Coordinate System: North American Datum of 1983 (NAD83), projected to the State Plane Coordinate System (SPCS), Louisiana South Zone. Vertical Datum: Soundings are shown in feet and indicate depths below Mean Low Gulf Datum (MLG). 2010 Aerial Photography data source: NAIP. Reference is N.O.A.A. Navigation Chart No. 11339. ** Shoalest Sounding per Quarter per Reach. *** High frequency (200 kHz) survey data represents the first signal return at a sounding location and will include suspended solids, known as "fluff", if present.