



US Army Corps of Engineers District: CEMVN

Access/Use: The United States Government furnishes these data and the recipient accepts and uses them with the express understanding that the data are not to be used for any purpose other than that for which they were prepared, and that the user is responsible for the accuracy, completeness, reliability, usability or suitability for any particular purpose of the data. The user shall not be held liable for any damage or injury resulting from the use of the data. The user shall not be held liable for any damage or injury resulting from the use of the data. The user shall not be held liable for any damage or injury resulting from the use of the data.

Distribution Liability: The data represents the results of data collection/processing for a specific US Army Corps of Engineers project. The user is responsible for the accuracy, completeness, reliability, usability or suitability for any particular purpose of the data. The user shall not be held liable for any damage or injury resulting from the use of the data. The user shall not be held liable for any damage or injury resulting from the use of the data.

Data Constraints: Hydrographic survey data is subject to change rapidly due to several factors including but not limited to changing bathymetry, sedimentation, and other factors. The user shall not be held liable for any damage or injury resulting from the use of the data. The user shall not be held liable for any damage or injury resulting from the use of the data.

Disclaimer: The information depicted on this map represents the results of a survey conducted on or about the date of the survey. It is not intended to represent the general condition existing at that time.

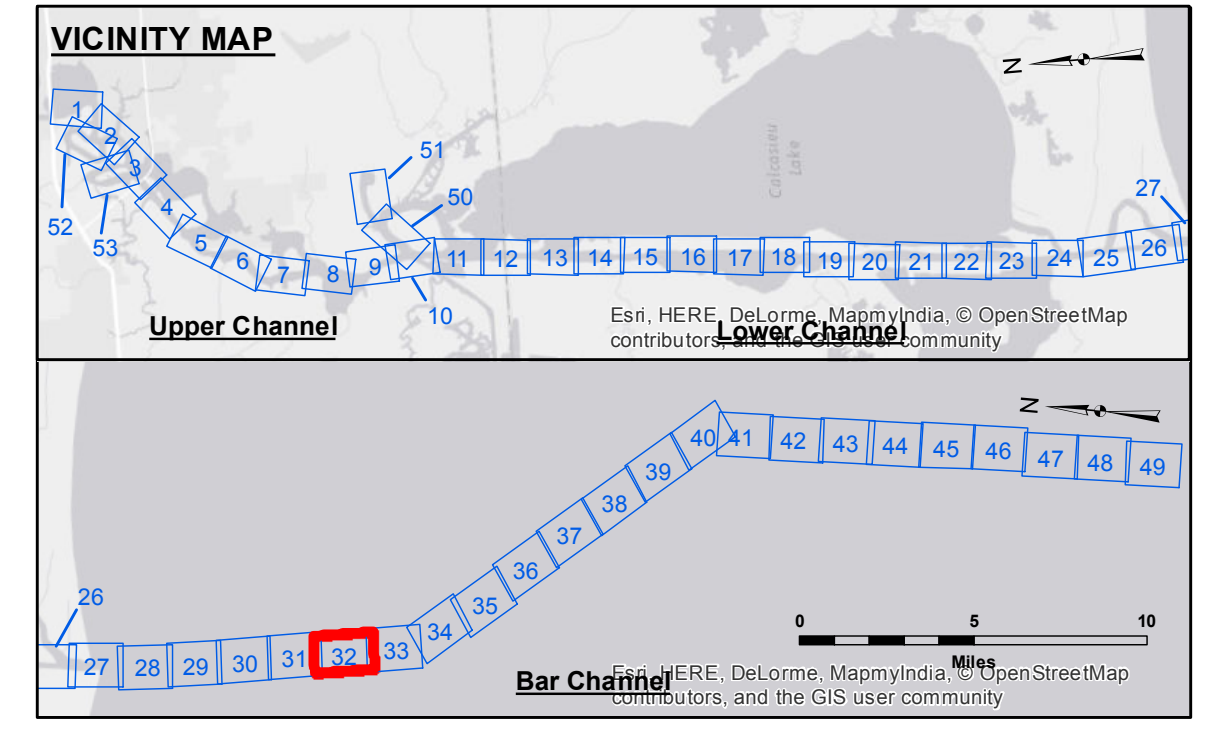
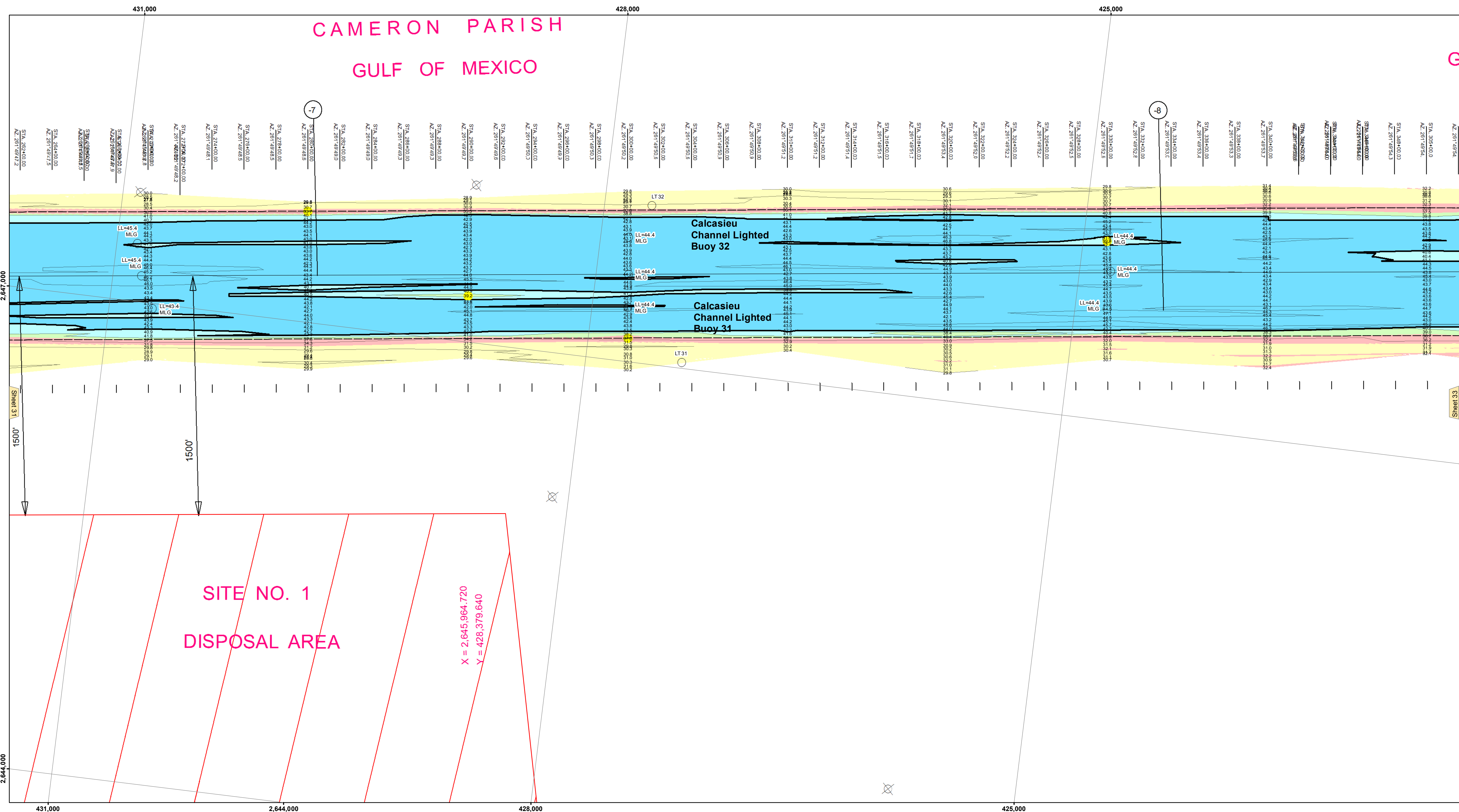
Submitted:	Surveyed By: SR,JH
Recommended:	Plotted By: AO
Approved:	Checked By: TF

U.S. ARMY CORPS OF ENGINEERS
NEW ORLEANS DISTRICT

CALCASIEU SHIP CHANNEL
BAR SHEET 32
CR_32_BAR_20151216
16 December 2015

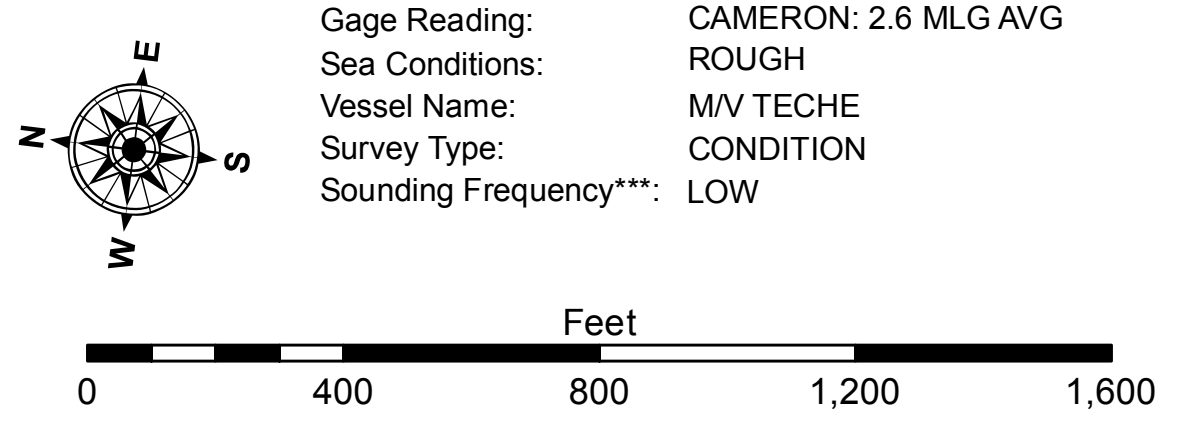
Sheet Reference Number
32 of 53

Revision Number: 3.8.9-20150202



LEGEND

--- Federal Navigation Channel	○ Cable Area	□ Borrow Area	■ -15' and above
— Federal Navigation Center Line	□ Placement Area	● Shoalest Sounding**	■ -15' to -20'
— As-built Pipeline/Cable	□ Anchorage Area	★ Beacon, General	■ -20' to -25'
..... Unconfirmed Pipeline/Cable	⊗ Obstruction Point	◆ Red Navigation Buoy	■ -25' to -32'
— Project Depth Contour	⚓ Wrecks-Submerged	◆ Green Navigation Buoy	■ -32' to -38'
			■ -38' to -40'
			■ -40' to -42'
			■ -42' and below



NOTES:

Horizontal Coordinate System: North American Datum of 1983 (NAD83), projected to the State Plane Coordinate System (SPCS), Louisiana South Zone. Distance units in U.S. Survey Feet.

Vertical Datum: Soundings are shown in feet and indicate depths below Mean Low Gulf Datum (MLG). Datum Relationships for gage 73650 as of December 2013: 0.0' NAVD83 (2009.55) = 1.3' MLLW = 2.3' MLG or 0.0' MLLW = 1.0' MLG

Distances on the Calcasieu River are shown at 1 mile intervals.

The location of navigation aids are base on and provided by the U.S. Coast Guard and USACE survey crews.

2010 Aerial Photography data source: NAIP

Reference is N.O.A. Navigation Chart No. 11339.

** Shoalest Sounding per Quarter per Reach.

*** High frequency (200 kHz) survey data represents the first signal return at a sounding location and will include suspended solids, known as "fluff", if present. Low frequency (20 kHz) survey data normally penetrates through this "fluff" layer to depict elevations of consolidated bottom material. Low frequency accuracies may vary depending on channel conditions and fathometer settings.