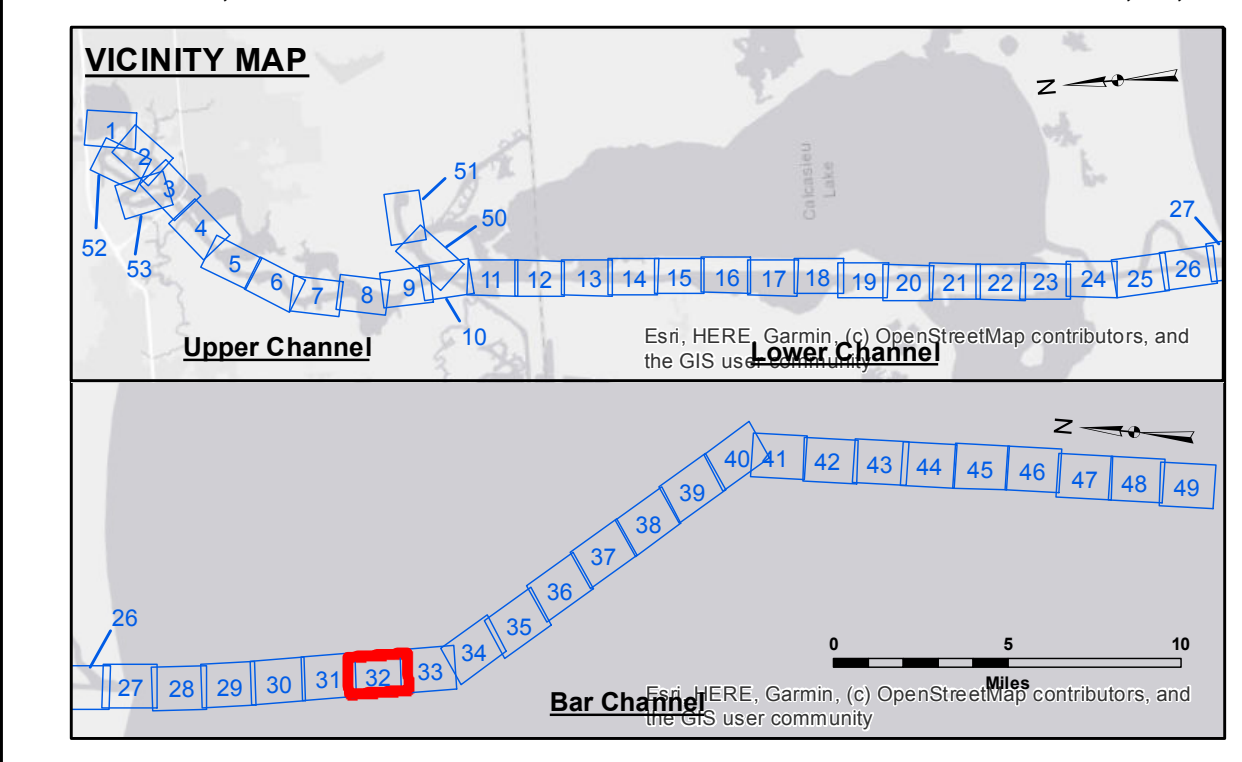
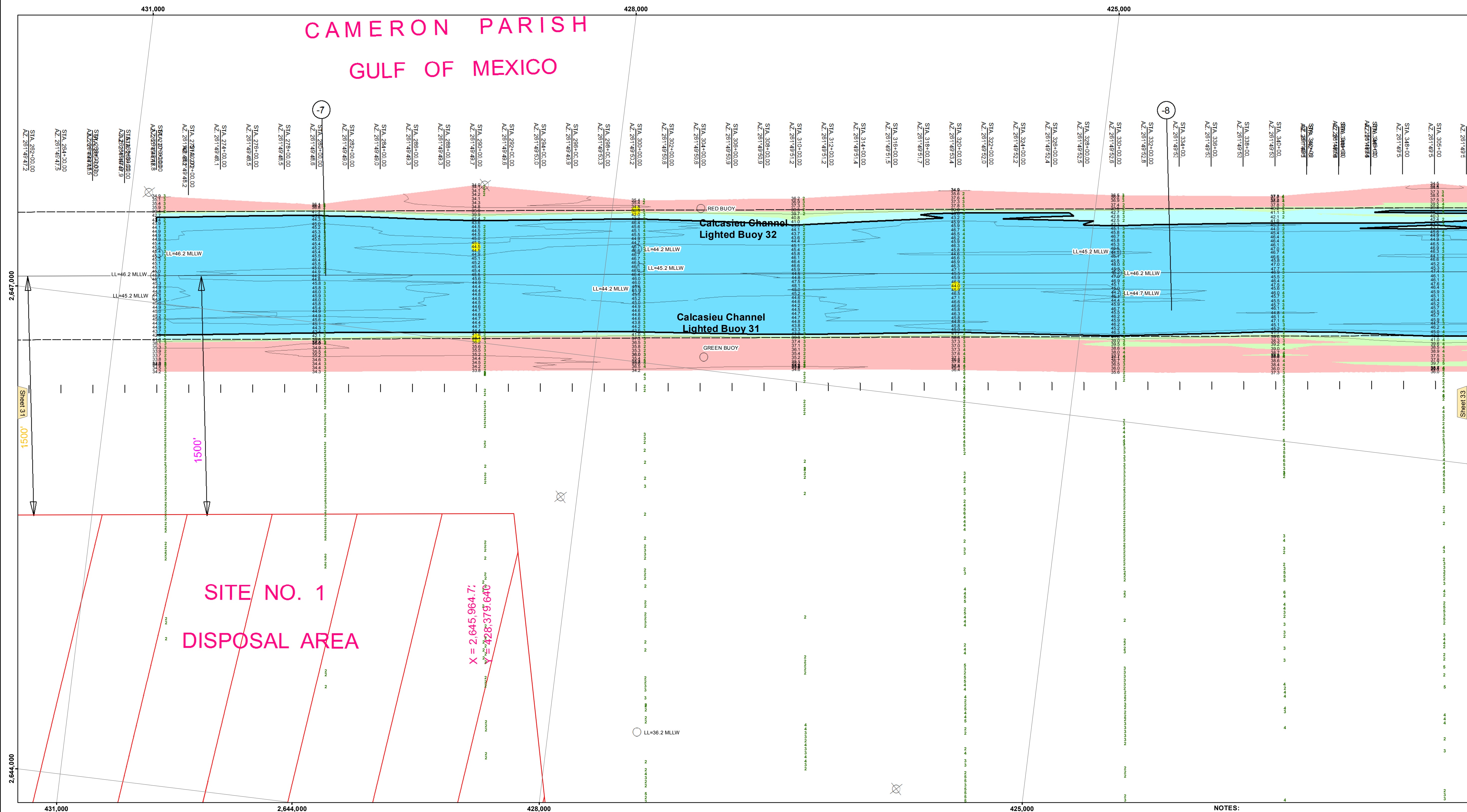
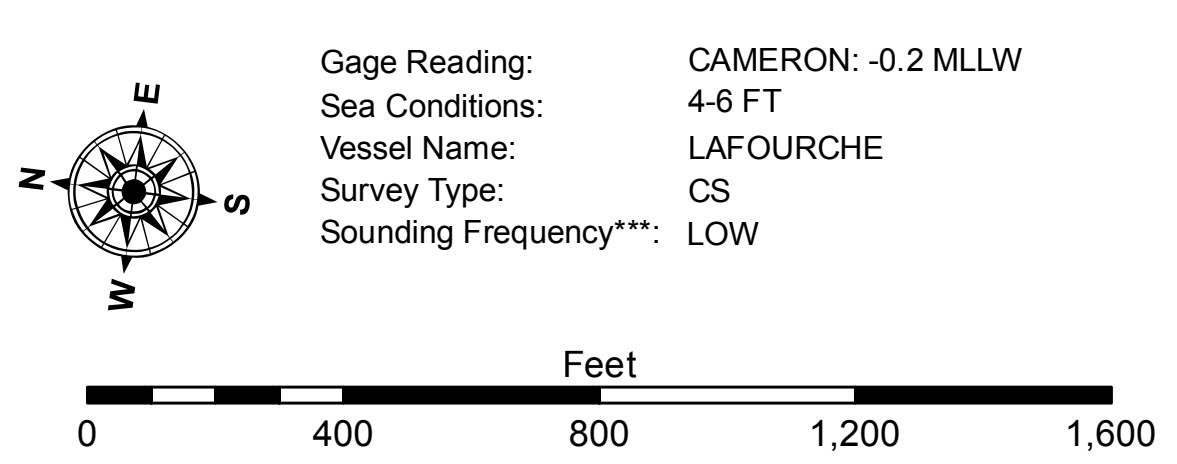


CAMERON PARISH GULF OF MEXICO



LEGEND	
--- Federal Navigation Channel	● Cable Area
— Federal Navigation Center Line	□ Placement Area
— As-built Pipeline/Cable	□ Anchorage Area
..... Unconfirmed Pipeline/Cable	⊗ Obstruction Point
— Project Depth Contour	⊗ Wrecks-Submerged
3 Fluff Thickness (feet)*	★ Beacon, General
● Shoalest Sounding**	◆ Red Navigation Buoy
● Green Navigation Buoy	◆ Green Navigation Buoy



NOTES:
 Horizontal Coordinate System:
 North American Datum of 1983 (NAD83), projected to the State Plane
 Coordinate System (SPCS), Louisiana South Zone. Distance units in U.S. Survey Feet.

Vertical Datum:
 Soundings are shown in feet and indicate depths below Mean Lower Low Water Datum (MLLW).
 Datum Relationships for gage 73650 as of December 2013:
 0.0' NAVD88 (2009.55) = 1.3' MLLW = 2.3' MLG or 0.0' MLLW = 1.0' MLG

Distances on the Calcasieu River are shown at 1 mile intervals.

The location of navigation aids are based on and provided by the U.S. Coast Guard and USACE survey crews.

2015 Aerial Photography data source: NAIP
 Reference is N.O.A.A. Navigation Chart No. 11339.

* Difference between high and low frequency elevations where greater than 1.0'.
 ** Shoalest Sounding per Quarter per Reach.
 *** High frequency (200 kHz) survey data represents the first signal return at a sounding location and will include suspended solids, known as "fluff", if present. Low frequency (20 kHz) survey data normally penetrates through this "fluff" layer to depict elevations of consolidated bottom material. Low frequency accuracies may vary depending on channel conditions and fathometer settings.



DISTRICT: CEMVN
 Accession: The United States Government furnishes these data and the recipient accepts and uses them with the express understanding that the data are not to be used for any purpose other than that for which they were prepared, or implied concerning the accuracy, completeness, reliability, usability or suitability for any particular purpose of the recipient. The user is responsible for the results of any use of the data. These data are not to be used for any purpose other than that for which they were prepared. The recipient may not transfer these data to others without also transferring this Disclaimer. The information depicted on this map represents the results of a hydrographic survey conducted in accordance with the standards of the United States Coast and Geodetic Survey. The information is not to be used for any purpose other than that for which it was prepared. The user is responsible for the results of any use of the data.

U.S. ARMY CORPS OF ENGINEERS NEW ORLEANS DISTRICT	
Submitted:	Surveyed By: DJS/SPS
Recommended:	Plotted By: AO
Approved:	Checked By: AO

**CALCASIEU SHIP CHANNEL
 BAR SHEET 32
 CR_32_BAR_20201215_CS
 15 December 2020**

**Sheet Reference Number
 32 of 53**