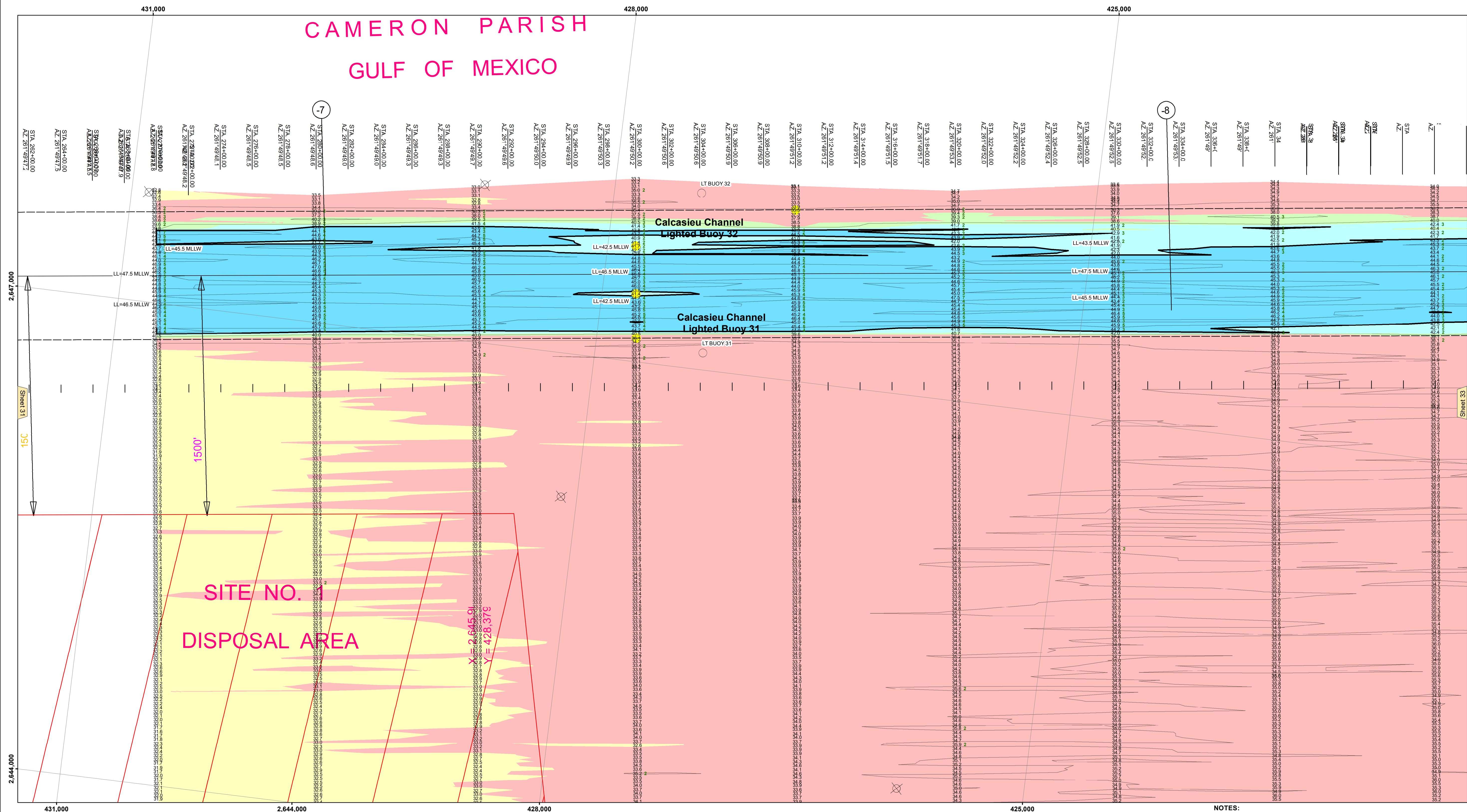


CAMERON PARISH GULF OF MEXICO

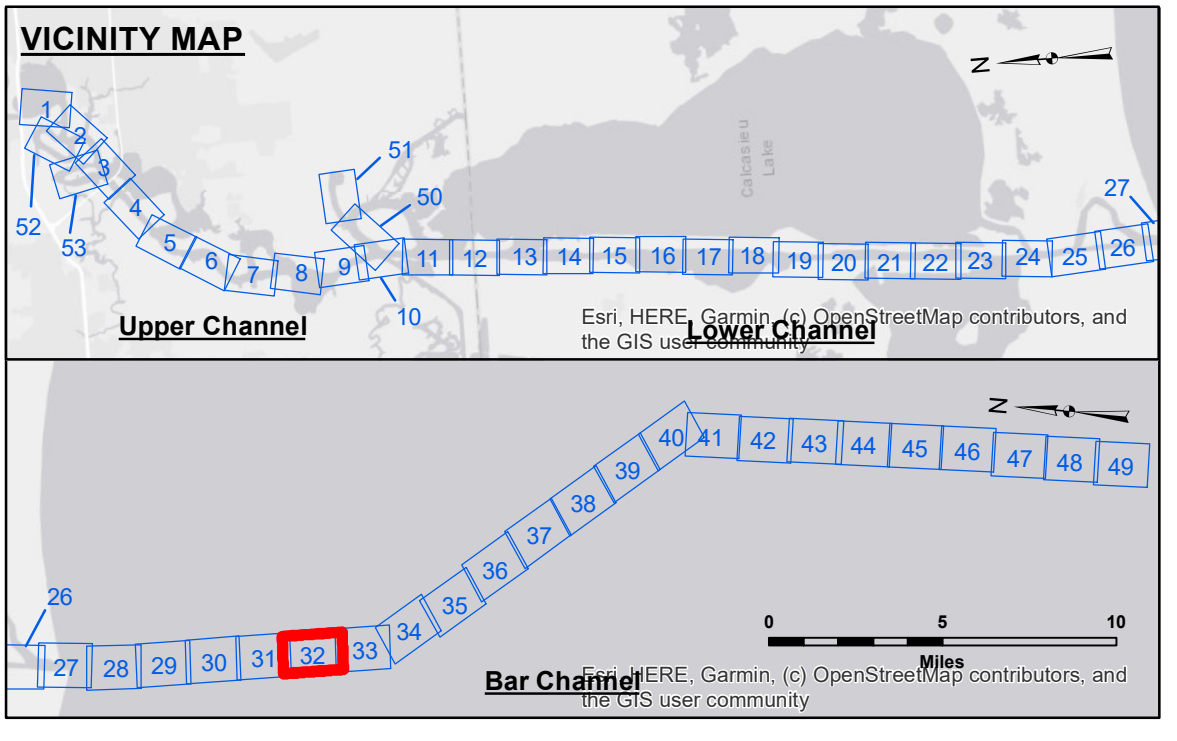


US Army Corps of Engineers District: CEMV

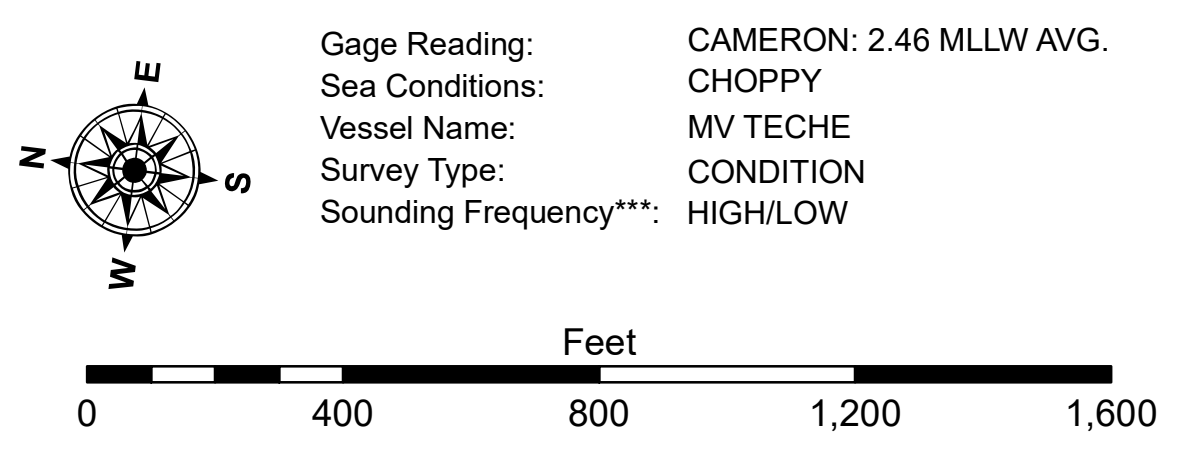
Access/Use: The United States Government furnishes these data and the recipient accepts and uses them with the express understanding that the data are not to be used for any purpose other than that for which they were originally prepared, expressed, or implied concerning the accuracy, completeness, reliability, usability or suitability for any particular purpose of the recipient. The user is responsible for the accuracy, completeness, reliability, usability or suitability of the data for their intended purpose. The information depicted on this map represents the results of a survey conducted on the ground and is not to be used for any purpose other than that for which it was prepared. The recipient may not transfer these data to others without also transferring the Disclaimer. The information depicted on this map represents the results of a survey conducted on the ground and is not to be used for any purpose other than that for which it was prepared. The recipient may not transfer these data to others without also transferring the Disclaimer.

U.S. ARMY CORPS OF ENGINEERS NEW ORLEANS DISTRICT		
Submitted:	Surveyed By: SP-JS	Plotted By: BD
Recommended:	Checked By: AD/JH	Checked By: AD/JH
Approved:	Chart, Waterways Maintenance Section	

**CALCASIEU SHIP CHANNEL
BAR SHEET 32
CR_32_BAR_20240528_CS
28 May 2024**



LEGEND	
--- Federal Navigation Channel	● Cable Area
— Federal Navigation Center Line	□ Placement Area
— As-built Pipeline/Cable	□ Anchorage Area
..... Unconfirmed Pipeline/Cable	⊗ Obstruction Point
— Project Depth Contour	⊗ Wrecks-Submerged
3 Fluff Thickness (feet)*	★ Beacon, General
● Shoalest Sounding**	◆ Red Navigation Buoy
★ Beacon, General	◆ Green Navigation Buoy



**Sheet Reference Number
32 of 53**

Revision Number:
4-2-2024(0428)