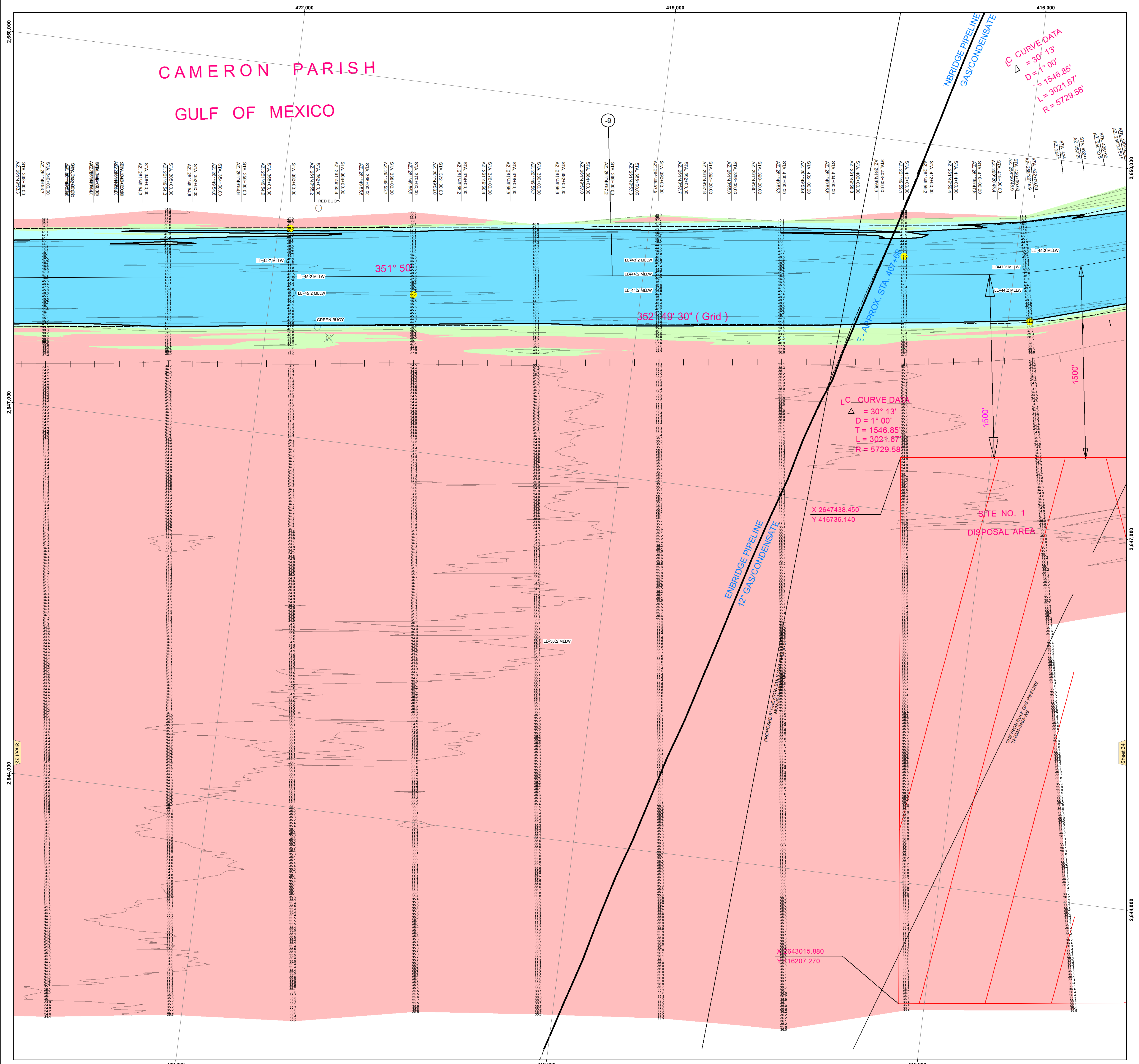


CAMERON PARISH
GULF OF MEXICO



IC CURVE DATA
Δ = 30° 13'
D = 1° 00'
T = 1546.85'
L = 3021.67'
R = 5729.58'

L.C. CURVE DATA
Δ = 30° 13'
D = 1° 00'
T = 1546.85'
L = 3021.67'
R = 5729.58'

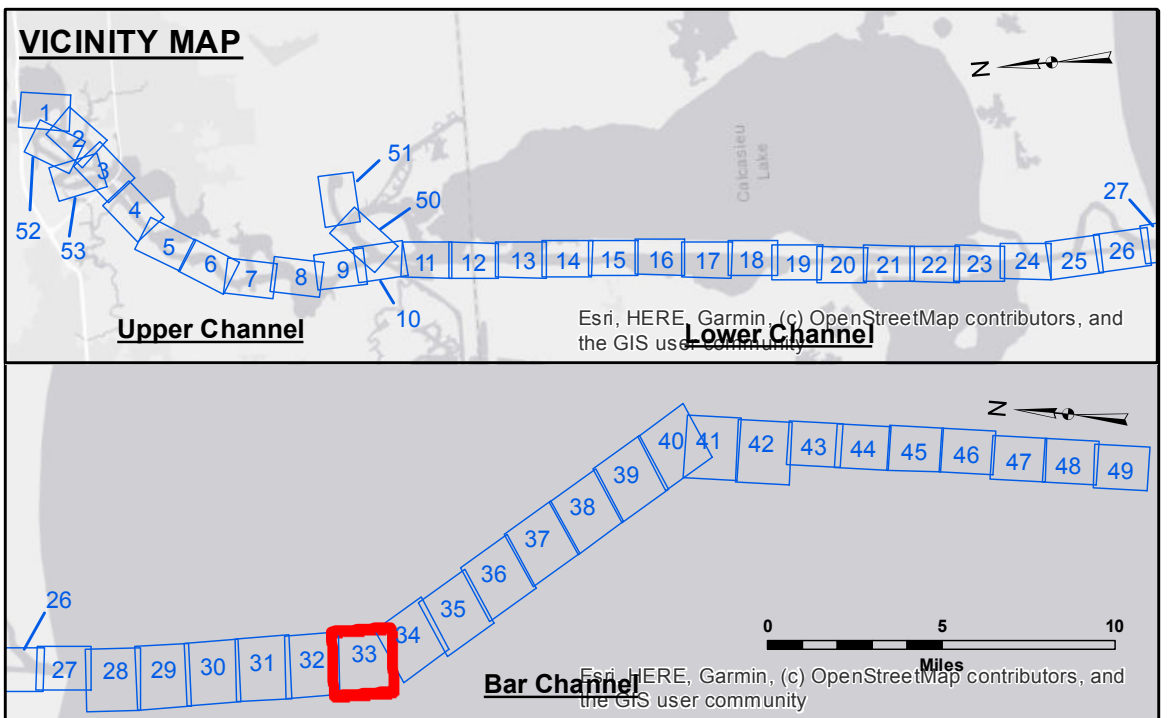
DISCLAIMER
The information on this plan represents the results of a survey conducted by the U.S. Army Corps of Engineers, District of Central and Western Louisiana, New Orleans District. The information is for informational purposes only and does not constitute a warranty of accuracy. The user of this information is advised that the user assumes all liability for any use of this information. The user is advised that the user is not to be held responsible for any errors or omissions in this information. The user is advised that the user is not to be held responsible for any damages or losses resulting from the use of this information. The user is advised that the user is not to be held responsible for any claims or lawsuits resulting from the use of this information. The user is advised that the user is not to be held responsible for any claims or lawsuits resulting from the use of this information.

Submitted:	Checked By:
Recommended:	Approved:
Chief, Survey Section	Chief, Waterways Maintenance Section

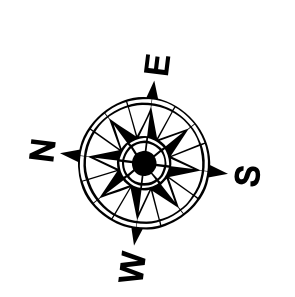
U.S. ARMY CORPS OF ENGINEERS
NEW ORLEANS DISTRICT
CALCASIEU SHIP CHANNEL
BAR SHEET 33
CR_33_BARX_20201215_CS
15 December 2020

Sheet Reference Number
33 of 53

Revision Number:
41-20191165



LEGEND	
--- Federal Navigation Channel	● Cable Area
— Federal Navigation Center Line	■ Placement Area
— As-built Pipeline/Cable	□ Anchorage Area
..... Unconfirmed Pipeline/Cable	⊗ Obstruction Point
— Project Depth Contour	⚓ Wrecks-Submerged
3 Fluff Thickness (feet)*	● Shoalest Sounding**
★ Beacon, General	★ Red Navigation Buoy
◆ Green Navigation Buoy	



Gage Reading: CAMERON: -0.2 MLLW
Sea Conditions: 4-6 FT
Vessel Name: LAFOURCHE
Survey Type: CS
Sounding Frequency***: HIGH

NOTES:
Horizontal Coordinate System:
North American Datum of 1983 (NAD83), projected to the State Plane Coordinate System (SPCS), Louisiana South Zone. Distance units in U.S. Survey Feet.
Vertical Datum:
Soundings are shown in feet and indicate depths below Mean Lower Low Water Datum (MLLW). Datum Relationships for gage 73650 as of December 2013:
0.0' NAVD88 (2009.55) = 1.3' MLLW = 2.3' MLG or 0.0' MLLW = 1.0' MLG
Distances on the Calcasieu River are shown at 1 mile intervals.
The location of navigation aids are based on and provided by the U.S. Coast Guard and USACE survey crews.
2015 Aerial Photography data source: NAIP
Reference is N.O.A. Navigation Chart No. 11339.
* Difference between high and low frequency elevations where greater than 1.0'.
** Shoalest Sounding per Quarter per Reach.
*** High frequency (200 kHz) survey data represents the first signal return at a sounding location and will include suspended solids, known as "fluff", if present. Low frequency (20 kHz) survey data normally penetrates through this "fluff" layer to depict elevations of consolidated bottom material. Low frequency accuracies may vary depending on channel conditions and fathometer settings.