

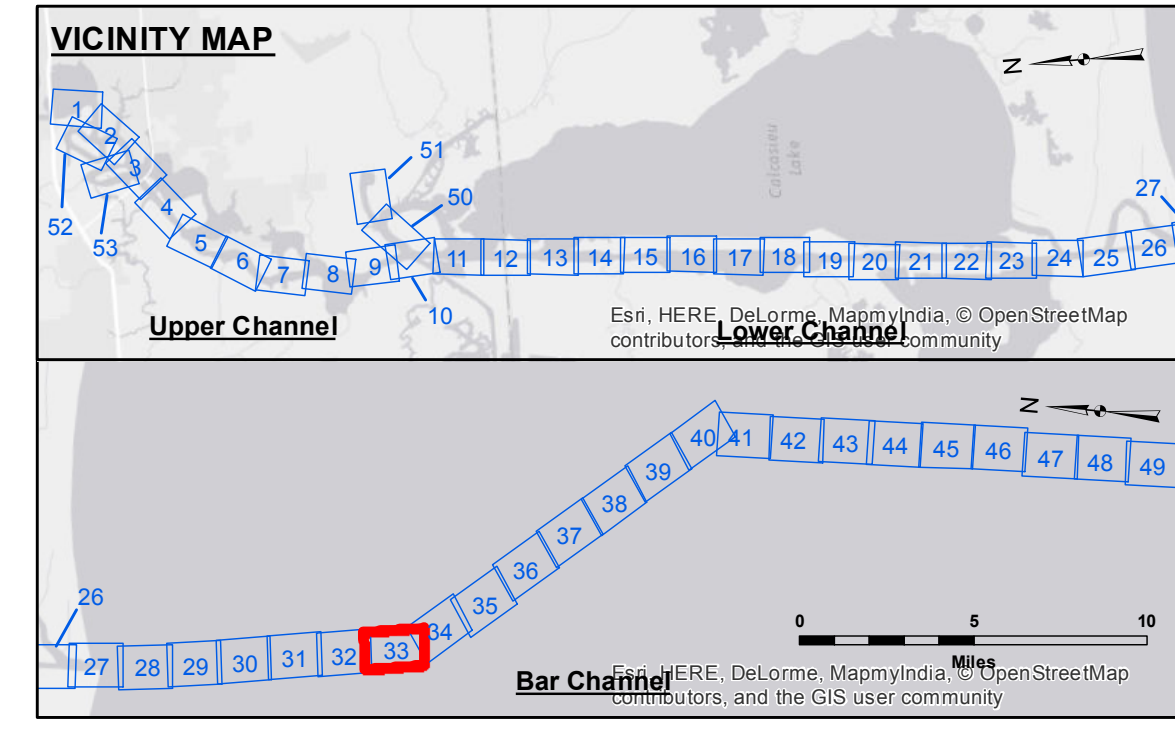
**DISCLAIMER**  
 The information depicted on this map represents the results of a survey conducted by the United States Army Corps of Engineers. The user is responsible for the accuracy, completeness, readability, usability or suitability for any particular purpose of the information. The user is responsible for the accuracy, completeness, readability, usability or suitability for any particular purpose of the information. The user is responsible for the accuracy, completeness, readability, usability or suitability for any particular purpose of the information. The user is responsible for the accuracy, completeness, readability, usability or suitability for any particular purpose of the information.

Submitted:	Surveyed By: SJR,jdh	Plotted By: BTD	Checked By: TAF
Recommended:	Chief, Survey Section		
Approved:	Chief, Waterways Maintenance Section		

**CALCASIEU SHIP CHANNEL**  
**BAR SHEET 33**  
**CR\_33\_BAR\_20160405**  
**05 April 2016**

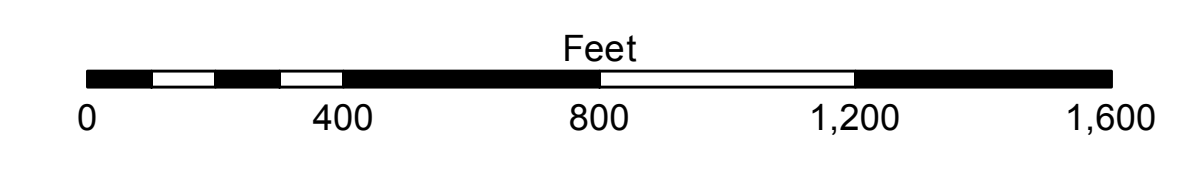
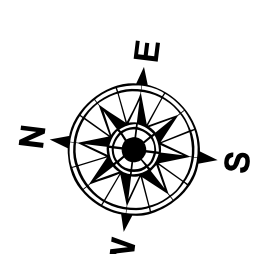
**Sheet Reference Number**  
**33 of 53**

Revision Number:  
 3.8.9-20150202



**LEGEND**

--- Federal Navigation Channel	● Cable Area	□ Borrow Area	■ -15' and above
— Federal Navigation Center Line	□ Placement Area	● Shoalest Sounding**	■ -15' to -20'
— As-built Pipeline/Cable	□ Anchorage Area	☆ Beacon, General	■ -20' to -25'
..... Unconfirmed Pipeline/Cable	⊗ Obstruction Point	◆ Red Navigation Buoy	■ -25' to -32'
— Project Depth Contour	⊗ Wrecks-Submerged	◆ Green Navigation Buoy	■ -32' to -38'
			■ -38' to -40'
			■ -40' to -42'
			■ -42' and below



Gage Reading: CAMERON: 1.84 MLG  
 Sea Conditions: 1'  
 Vessel Name: MV TECHE  
 Survey Type: CONDITION  
 Sounding Frequency\*\*\*: LOW

**NOTES:**  
 Horizontal Coordinate System: North American Datum of 1983 (NAD83), projected to the State Plane Coordinate System (SPCS), Louisiana South Zone. Distance units in U.S. Survey Feet.  
 Vertical Datum: Soundings are shown in feet and indicate depths below Mean Low Gulf Datum (MLG). Datum Relationships for gage 73650 as of December 2013: 0.0' NAVD83 (2009.55) = 1.3' MLLW = 2.3' MLG or 0.0' MLLW = 1.0' MLG  
 Distances on the Calcasieu River are shown at 1 mile intervals.  
 The location of navigation aids are base on and provided by the U.S. Coast Guard and USACE survey crews.  
 2010 Aerial Photography data source: NAIP  
 Reference is N.O.A.A. Navigation Chart No. 11339.  
 \*\* Shoalest Sounding per Quarter per Reach.  
 \*\*\* High frequency (200 kHz) survey data represents the first signal return at a sounding location and will include suspended solids, known as "fluff", if present. Low frequency (20 kHz) survey data normally penetrates through this "fluff" layer to depict elevations of consolidated bottom material. Low frequency accuracies may vary depending on channel conditions and fathometer settings.