



US Army Corps of Engineers District: CEMVN

Distribution Liability: The data represents the results of data collection/processing for a specific US Army Corps of Engineers project. It is not intended for use in any other project. The user is responsible for the accuracy, reliability, usability or suitability for any particular purpose of the information. The user is responsible for the accuracy, reliability, usability or suitability for any particular purpose of the information. The user is responsible for the accuracy, reliability, usability or suitability for any particular purpose of the information. The user is responsible for the accuracy, reliability, usability or suitability for any particular purpose of the information.

Accession: The United States Government furnishes these data and the recipient accepts and uses them with the express understanding that the United States Government makes no warranty, expressed or implied, concerning the accuracy, completeness, reliability, usability or suitability for any particular purpose of the information. The user is responsible for the accuracy, reliability, usability or suitability for any particular purpose of the information. The user is responsible for the accuracy, reliability, usability or suitability for any particular purpose of the information. The user is responsible for the accuracy, reliability, usability or suitability for any particular purpose of the information.

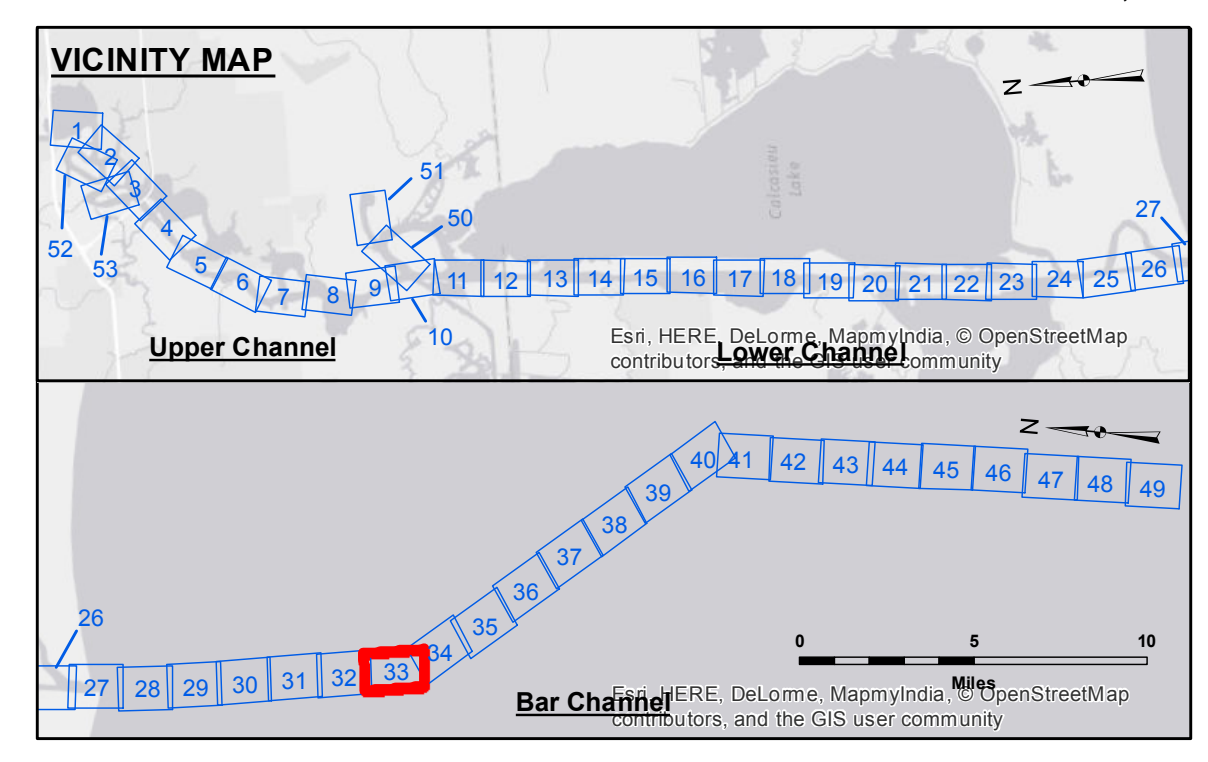
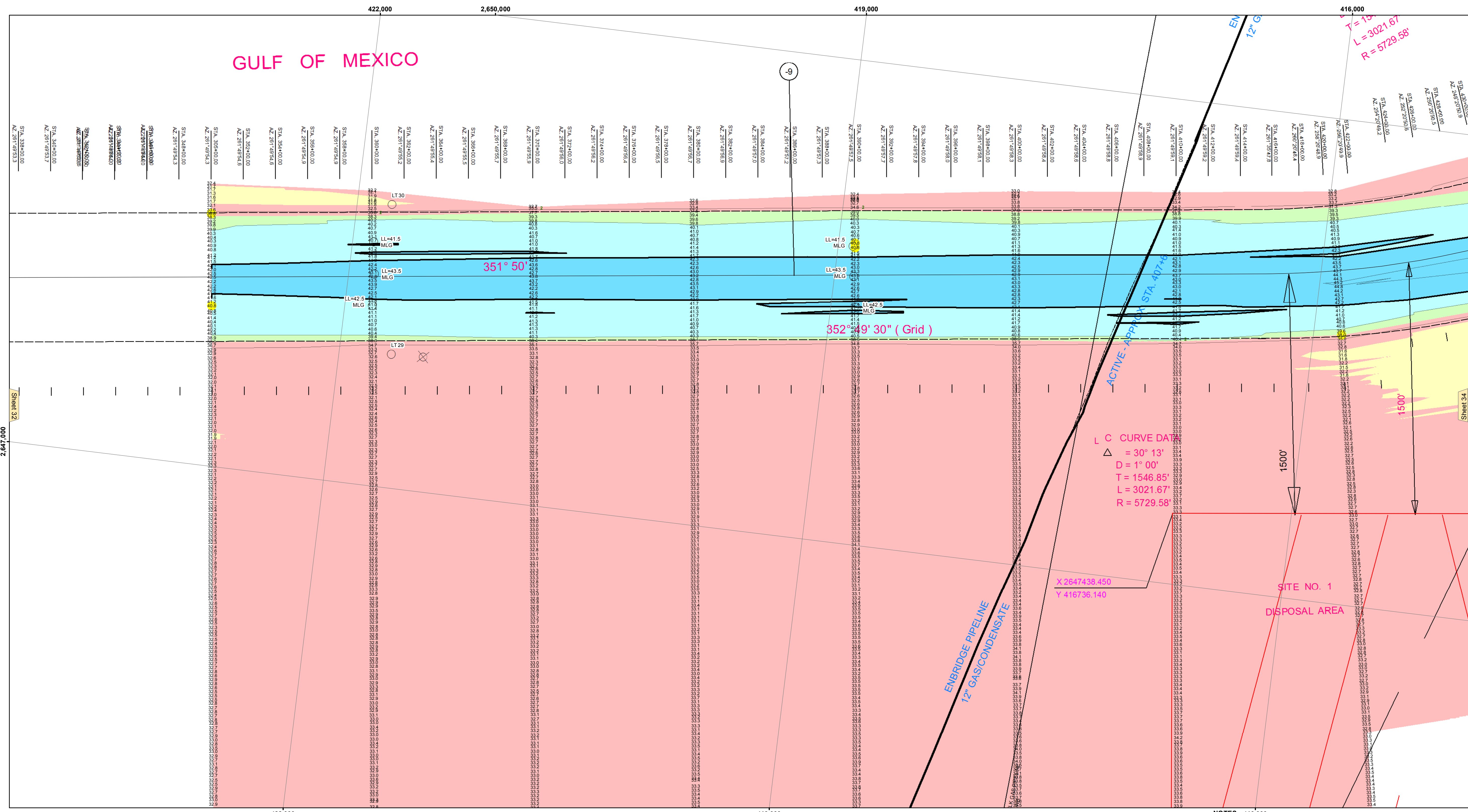
Submitted:	Surveyed By: SPS,JDH
Recommended:	Plotted By: AO
Approved:	Checked By: AO

U.S. ARMY CORPS OF ENGINEERS
NEW ORLEANS DISTRICT

CALCASIEU SHIP CHANNEL
BAR SHEET 33
CR_33_BAR_20160921
21 September 2016

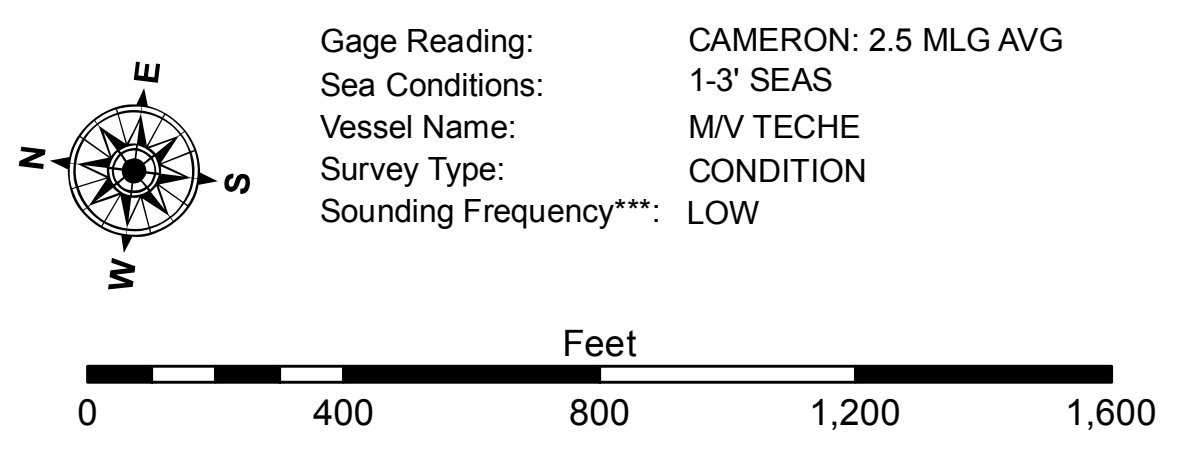
Sheet Reference Number
33 of 53

Revision Number:
3.8.9-20150202



LEGEND

--- Federal Navigation Channel	● Cable Area	3 Fluff Thickness (feet)*	■ -15' and above
— Federal Navigation Center Line	□ Placement Area	● Shoalest Sounding**	■ -15' to -20'
— As-built Pipeline/Cable	□ Anchorage Area	★ Beacon, General	■ -20' to -25'
..... Unconfirmed Pipeline/Cable	⊗ Obstruction Point	◆ Red Navigation Buoy	■ -25' to -32'
— Project Depth Contour	⊗ Wrecks-Submerged	◆ Green Navigation Buoy	■ -32' to -38'
			■ -38' to -40'
			■ -40' to -42'
			■ -42' and below



NOTES: 416,000
Horizontal Coordinate System: North American Datum of 1983 (NAD83), projected to the State Plane Coordinate System (SPCS), Louisiana South Zone. Distance units in U.S. Survey Feet.
Vertical Datum: Soundings are shown in feet and indicate depths below Mean Low Gulf Datum (MLG). Datum Relationships for gage 73650 as of December 2013: 0.0' NAVD88 (2009.55) = 1.3' MLLW = 2.3' MLG or 0.0' MLLW = 1.0' MLG
Distances on the Calcasieu River are shown at 1 mile intervals.
The location of navigation aids are based on and provided by the U.S. Coast Guard and USACE survey crews.
2015 Aerial Photography data source: NAIP
Reference is N.O.A.A. Navigation Chart No. 11339.
* Difference between high and low frequency elevations where greater than 1.0'.
** Shoalest Sounding per Quarter per Reach.
*** High frequency (200 kHz) survey data represents the first signal return at a sounding location and will include suspended solids, known as "fluff", if present. Low frequency (20 kHz) survey data normally penetrates through this "fluff" layer to depict elevations of consolidated bottom material. Low frequency accuracies may vary depending on channel conditions and fathometer settings.