

US Army Corps of Engineers District: CEMVN

DISCLAIMER: The United States Government furnishes these data and the recipient accepts and uses them with the express understanding that the Government makes no warranty, expressed or implied, regarding the accuracy, completeness, reliability, usability or suitability for any particular purpose of the information. The user is responsible for the results obtained from the use of this information. The user shall indemnify and hold the United States Government harmless from and against all claims, damages, costs and expenses, including reasonable attorneys' fees, that may be incurred by the United States Government as a result of the use of this information. The information depicted on this map represents the results of a survey conducted on or about the date shown in the title block and is not intended to represent the general condition existing at that time.

Submitted:	Surveyed By: JA, JH
Recommended:	Plotted By: AO
Approved:	Checked By: AO

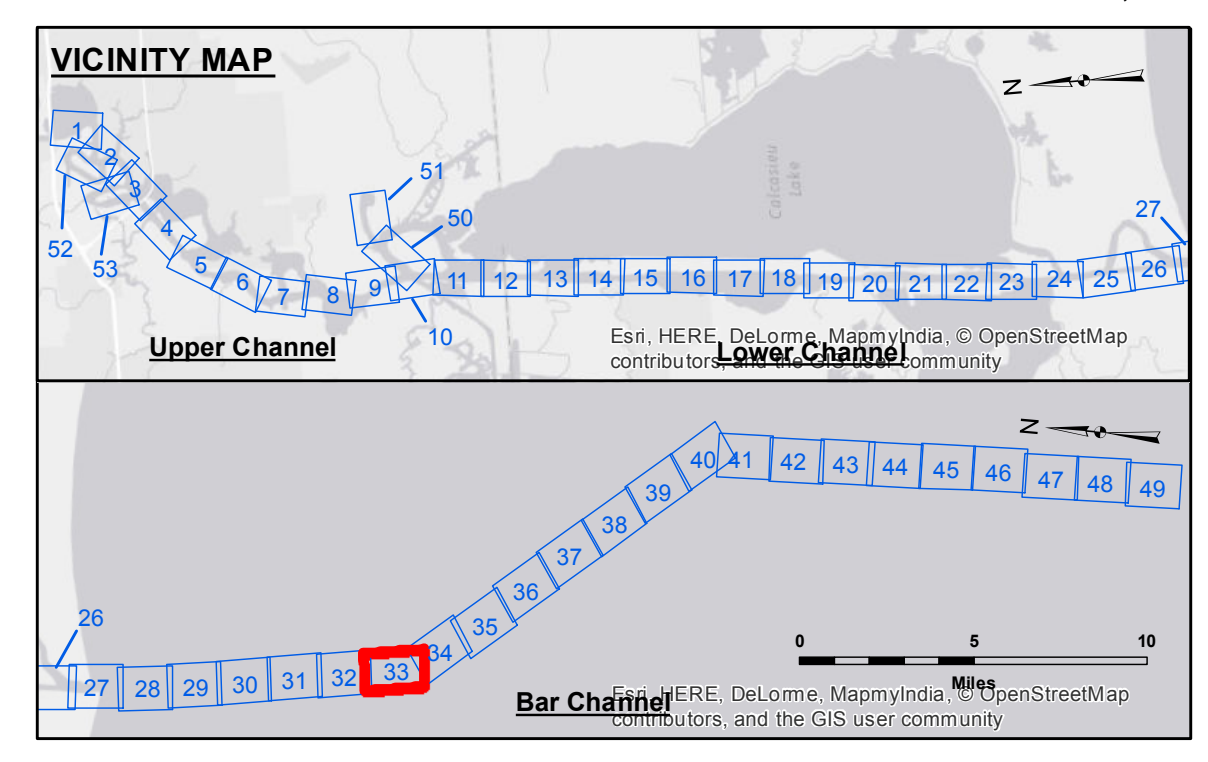
U.S. ARMY CORPS OF ENGINEERS
NEW ORLEANS DISTRICT

Chief, Waterways Maintenance Section

CALCASIEU SHIP CHANNEL
BAR SHEET 33
CR_33_BAR_20170901_CS_POSTSTORM
01 September 2017

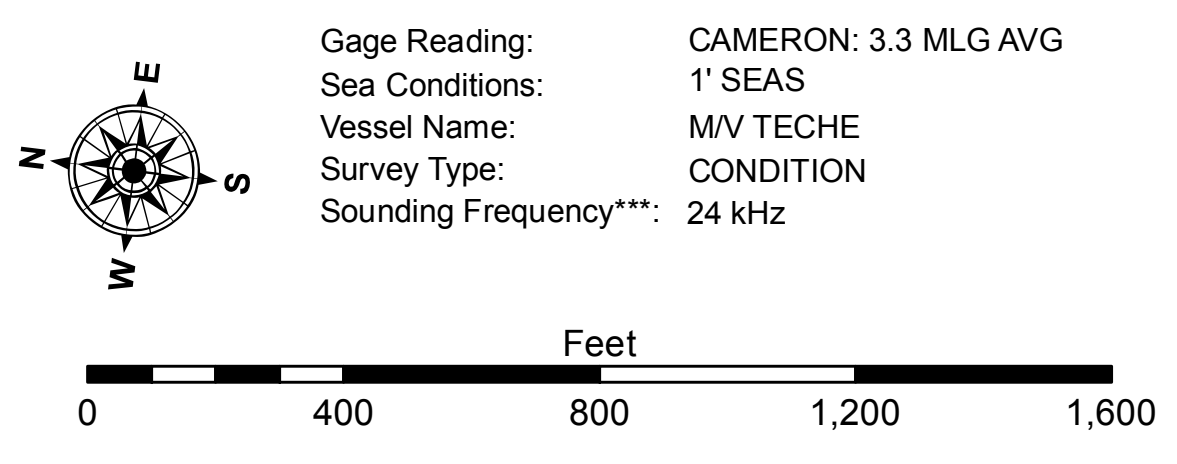
Sheet Reference Number
33 of 53

Revision Number:
3.13-20160811



LEGEND

--- Federal Navigation Channel	○ Cable Area	3 Fluff Thickness (feet)*	-15' and above
— Federal Navigation Center Line	□ Placement Area	● Shoalest Sounding**	-15' to -20'
— As-built Pipeline/Cable	□ Anchorage Area	★ Beacon, General	-20' to -25'
..... Unconfirmed Pipeline/Cable	⊗ Obstruction Point	◆ Red Navigation Buoy	-25' to -32'
— Project Depth Contour	⊗ Wrecks-Submerged	◆ Green Navigation Buoy	-32' to -38'
			-38' to -40'
			-40' to -42'
			-42' and below



NOTES: 416,000
Horizontal Coordinate System: North American Datum of 1983 (NAD83), projected to the State Plane Coordinate System (SPCS), Louisiana South Zone. Distance units in U.S. Survey Feet.

Vertical Datum: Soundings are shown in feet and indicate depths below Mean Low Gulf Datum (MLG). Datum Relationships for gage 73650 as of December 2013: 0.0' NAVD88 (2009.55) = 1.3' MLLW = 2.3' MLG or 0.0' MLLW = 1.0' MLG

Distances on the Calcasieu River are shown at 1 mile intervals.

The location of navigation aids are based on and provided by the U.S. Coast Guard and USACE survey crews.

2015 Aerial Photography data source: NAIP

Reference is N.O.A.A. Navigation Chart No. 11339.

* Difference between high and low frequency elevations where greater than 1.0'.
** Shoalest Sounding per Quarter per Reach.
*** High frequency (200 kHz) survey data represents the first signal return at a sounding location and will include suspended solids, known as "fluff", if present. Low frequency (20 kHz) survey data normally penetrates through this "fluff" layer to depict elevations of consolidated bottom material. Low frequency accuracies may vary depending on channel conditions and fathometer settings.