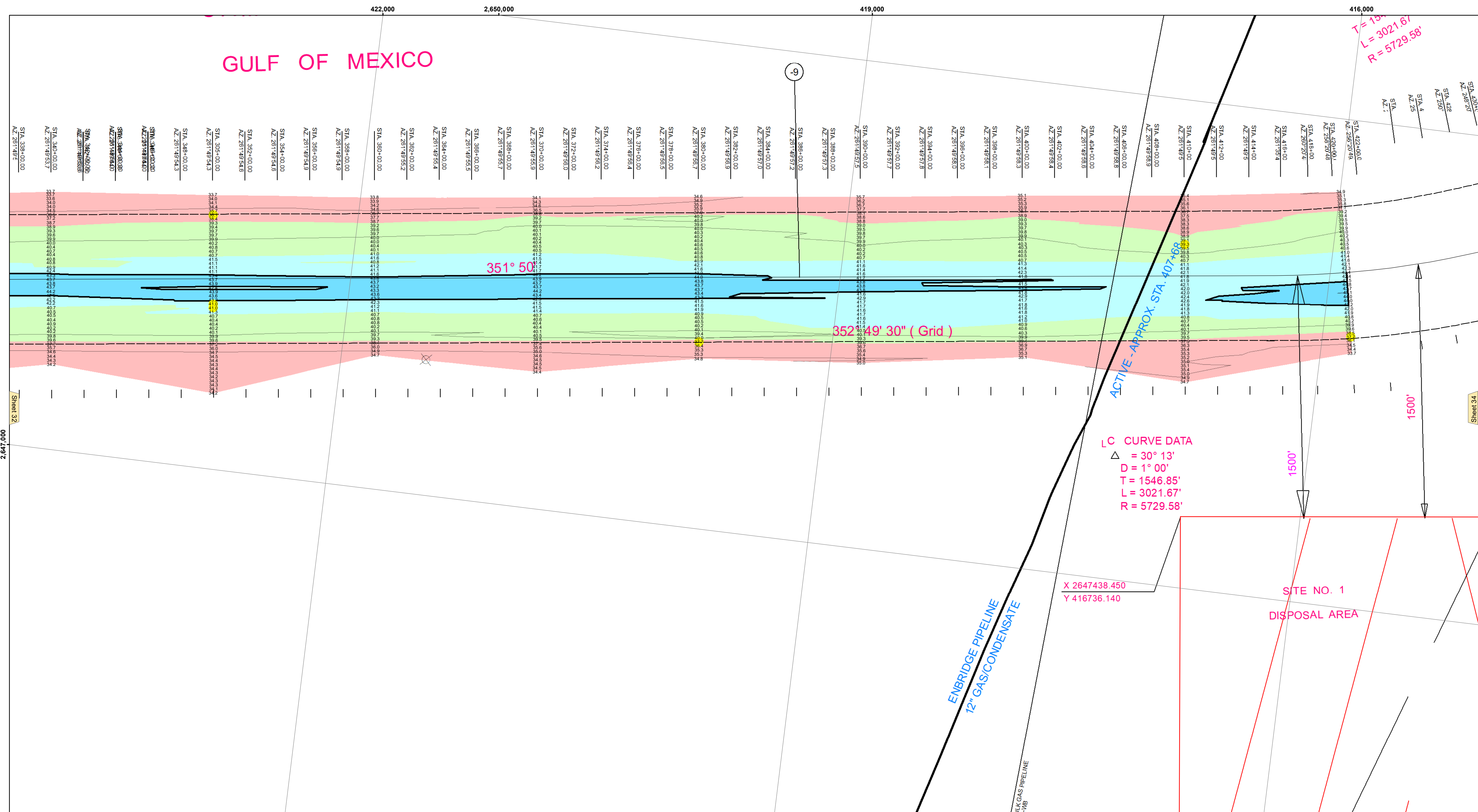




US Army Corps of Engineers District: CEMVN

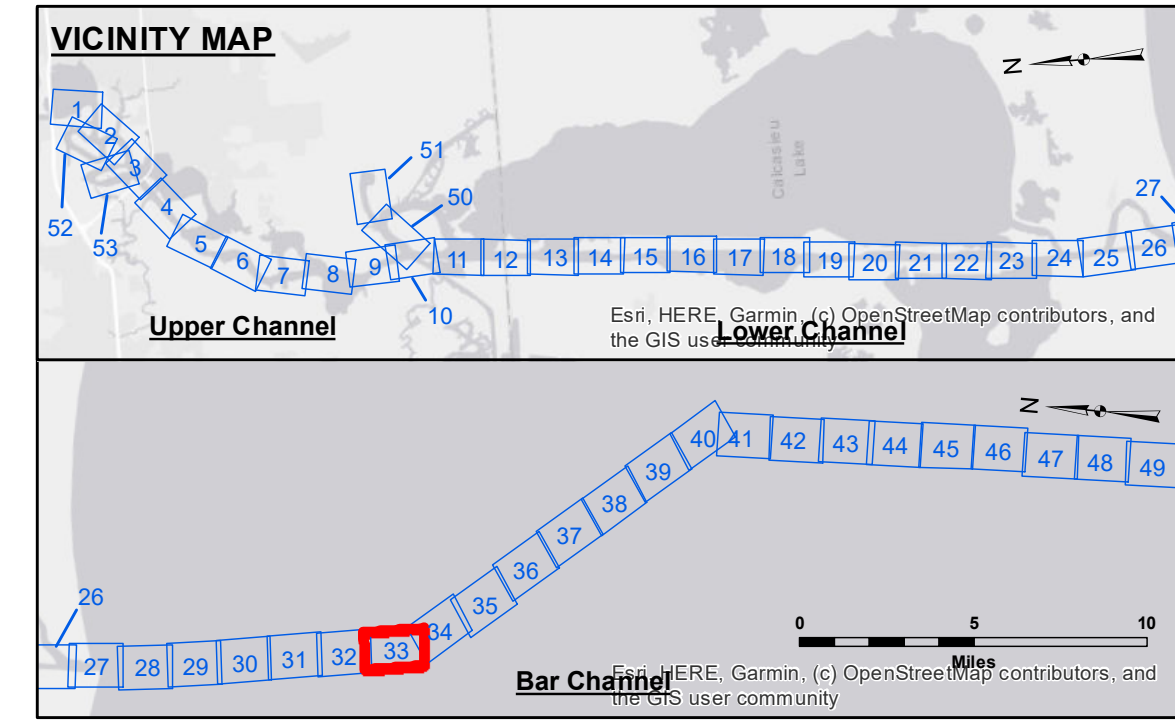
DISCLAIMER: The data represents the results of data collection performed for a specific US Army Corps of Engineers project. The user is responsible for the results and accuracy of the data. The user is responsible for the results and accuracy of the data. The user is responsible for the results and accuracy of the data.



LC CURVE DATA
 $\Delta = 30^\circ 13'$
 $D = 1^\circ 00'$
 $T = 1546.85'$
 $L = 3021.67'$
 $R = 5729.58'$

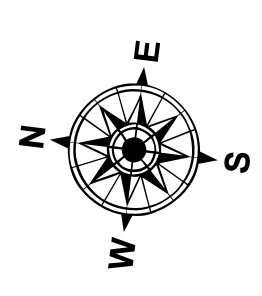
SITE NO. 1 DISPOSAL AREA

X 2647438.450
 Y 416736.140

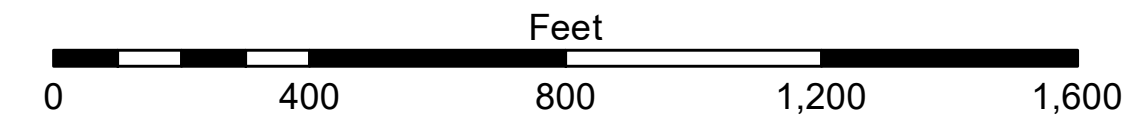


LEGEND

--- Federal Navigation Channel	● Cable Area	3 Fluff Thickness (feet)*	■ -16' and above
— Federal Navigation Center Line	□ Placement Area	● Shoalest Sounding**	■ -16' to -21'
— As-built Pipeline/Cable	□ Anchorage Area	★ Beacon, General	■ -21' to -26'
..... Unconfirmed Pipeline/Cable	⊗ Obstruction Point	◆ Red Navigation Buoy	■ -26' to -33'
— Project Depth Contour	⊗ Wrecks-Submerged	◆ Green Navigation Buoy	■ -33' to -39'
			■ -39' to -41'
			■ -41' to -43'
			■ -43' and below



Gage Reading: NOAA CALC PASS: 2.5' MLLW AVG
 Sea Conditions: CALM
 Vessel Name: SV TURPIN
 Survey Type: CONDITION
 Sounding Frequency***: HIGH



NOTES: 416,000
 Horizontal Coordinate System: North American Datum of 1983 (NAD83), projected to the State Plane Coordinate System (SPCS), Louisiana South Zone. Distance units in U.S. Survey Feet.

Vertical Datum: Soundings are shown in feet and indicate depths below Mean Lower Low Water Datum (MLLW). Datum Relationships for gage 73650 as of December 2013: 0.0' NAVD88 (2009.55) = 1.3' MLLW = 2.3' MLG or 0.0' MLLW = 1.0' MLG

Distances on the Calcasieu River are shown at 1 mile intervals.

The location of navigation aids are based on and provided by the U.S. Coast Guard and USACE survey crews.

2015 Aerial Photography data source: NAIP
 Reference is N.O.A.A. Navigation Chart No. 11339.

* Difference between high and low frequency elevations where greater than 1.0'.
 ** Shoalest Sounding per Quarter per Reach.
 *** High frequency (200 kHz) survey data represents the first signal return at a sounding location and will include suspended solids, known as "fluff", if present. Low frequency (20 kHz) survey data normally penetrates through this "fluff" layer to depict elevations of consolidated bottom material. Low frequency accuracies may vary depending on channel conditions and fathometer settings.

U.S. ARMY CORPS OF ENGINEERS NEW ORLEANS DISTRICT

Submitted:	Surveyed By: SWG
Recommended:	Plotted By: JH
Checked By: JH	Checked By: JH
Approved:	Chief, Waterways Maintenance Section

CALCASIEU SHIP CHANNEL BAR SHEET 33
CR_33_BAR_20210916_CS_POSTIDA
 16 September 2021

Sheet Reference Number
 33 of 53