

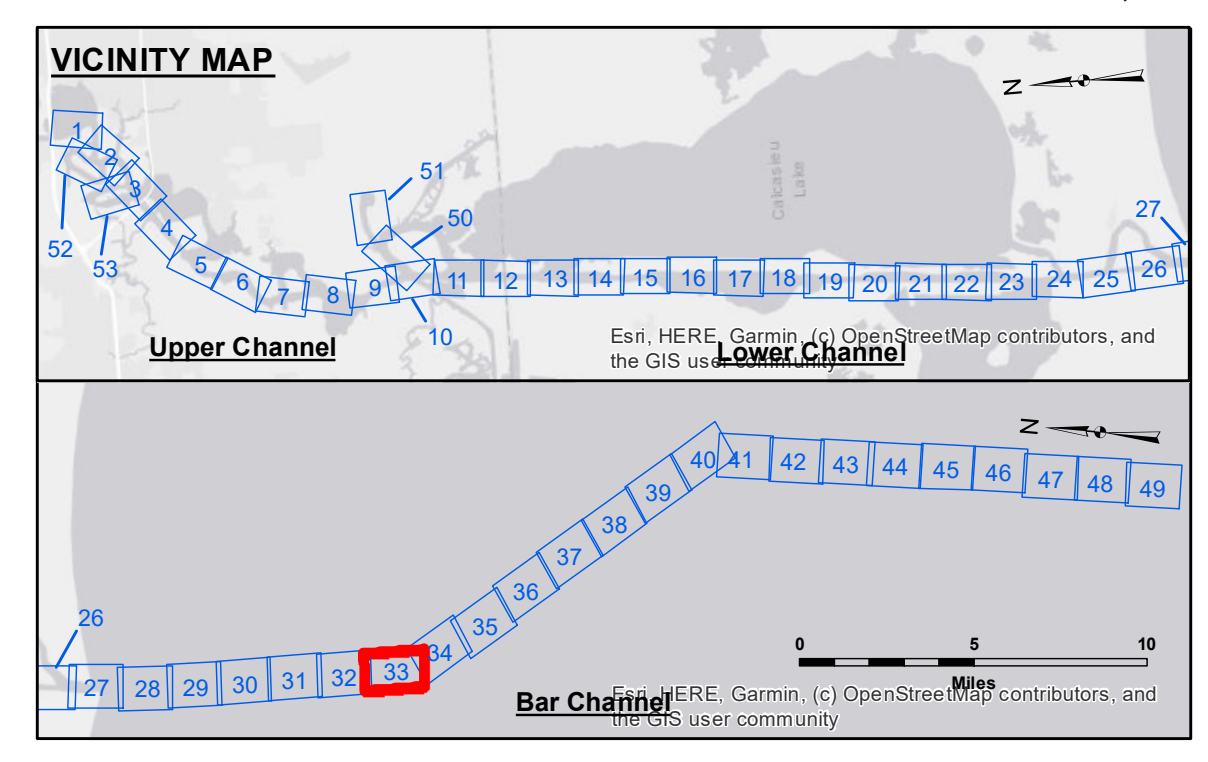
DISCLAIMER
 The information depicted on this map represents the results of a survey conducted by the United States Army Corps of Engineers. The user is responsible for the accuracy, completeness, and reliability of the information for the intended use. The user is advised that this information is not intended for navigation and should not be used for that purpose. The user is advised that this information is not intended for use in any other manner than that for which it was intended. The user is advised that this information is not intended for use in any other manner than that for which it was intended. The user is advised that this information is not intended for use in any other manner than that for which it was intended.

| | |
|--------------|-----------------------|
| Submitted: | Surveyed By: SP/JS |
| Recommended: | Plotted By: BD |
| Approved: | Checked By: AO/JH |

U.S. ARMY CORPS OF ENGINEERS
 NEW ORLEANS DISTRICT
 Chief, Waterways Maintenance Section

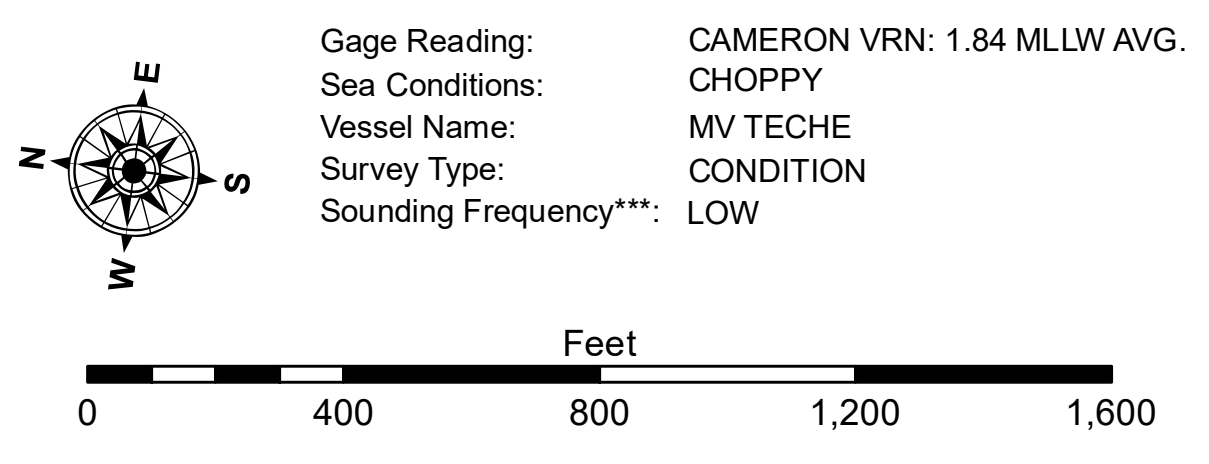
CALCASIEU SHIP CHANNEL
BAR SHEET 33
CR_33_BAR_20240415_CS
15 April 2024

Sheet Reference Number
33 of 53



LEGEND

| | | | |
|----------------------------------|---------------------|---------------------------|----------------|
| --- Federal Navigation Channel | ● Cable Area | 3 Fluff Thickness (feet)* | -16' and above |
| — Federal Navigation Center Line | □ Placement Area | ● Shoalest Sounding** | -16' to -21' |
| — As-built Pipeline/Cable | □ Anchorage Area | ★ Beacon, General | -21' to -26' |
| Unconfirmed Pipeline/Cable | ⊗ Obstruction Point | ◆ Red Navigation Buoy | -26' to -33' |
| — Project Depth Contour | ⊗ Wrecks-Submerged | ◆ Green Navigation Buoy | -33' to -39' |
| | | | -39' to -41' |
| | | | -41' to -43' |
| | | | -43' and below |



NOTES: 416,000
 Horizontal Coordinate System: North American Datum of 1983 (NAD83), projected to the State Plane Coordinate System (SPCS), Louisiana South Zone. Distance units in U.S. Survey Feet.
 Vertical Datum: Soundings are shown in feet and indicate depths below Mean Lower Low Water Datum (MLLW). Datum Relationships for gage 73650 as of December 2013: 0.0' NAVD88 (2009.55) = 1.3' MLLW = 2.3' MLG or 0.0' MLLW = 1.0' MLG
 Distances on the Calcasieu River are shown at 1 mile intervals.
 The location of navigation aids are based on and provided by the U.S. Coast Guard and USACE survey crews.
 2015 Aerial Photography data source: NAIP
 Reference is N.O.A.A. Navigation Chart No. 11339.
 * Difference between high and low frequency elevations where greater than 1.0'.
 ** Shoalest Sounding per Quarter per Reach.
 *** High frequency (200 kHz) survey data represents the first signal return at a sounding location and will include suspended solids, known as "fluff", if present. Low frequency (20 kHz) survey data normally penetrates through this "fluff" layer to depict elevations of consolidated bottom material. Low frequency accuracies may vary depending on channel conditions and fathometer settings.