



US Army Corps of Engineers District: CEMVN

Distribution Liability: The data represents the results of data collection/processing for a specific US Army Corps of Engineers project. It is only valid for its intended use, control, time and accuracy specifications. The user is responsible for the results of any application of the data for other than its intended purpose.

Disclaimer: Hydrographic survey data is subject to change rapidly due to several factors including but not limited to dredging, sedimentation, and changes in bathymetry. The US Army Corps of Engineers accepts no responsibility for changes in the hydrographic conditions which develop after the date of the original survey. Product maintainers should not rely solely upon this information.

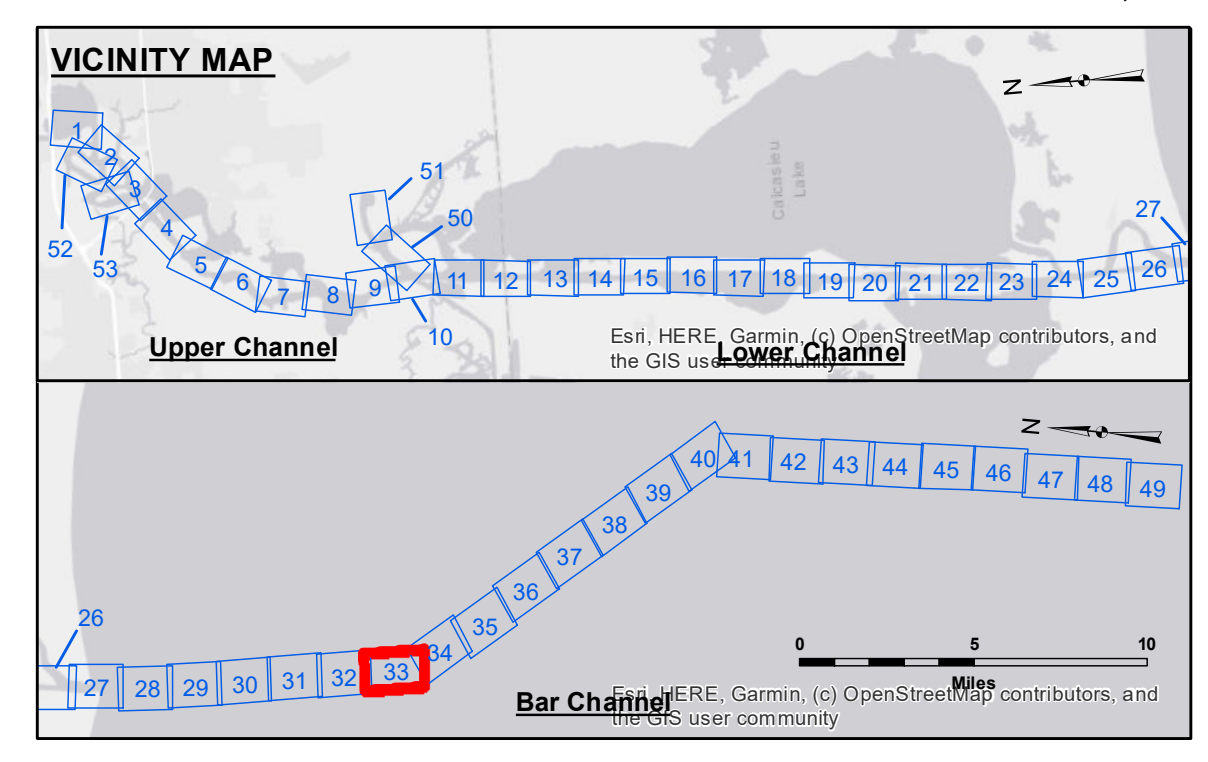
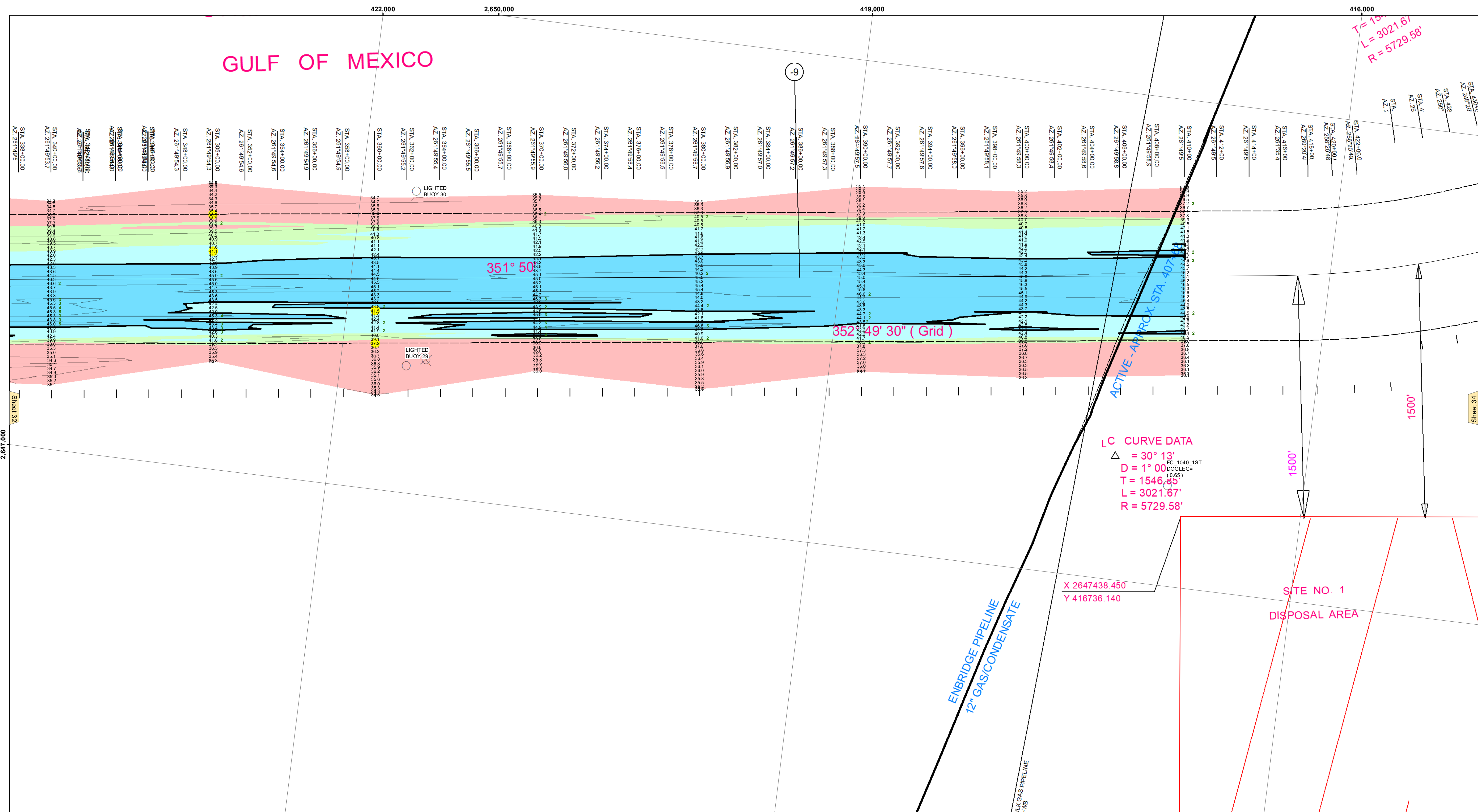
Submitted:	Surveyed By: SPJS
Recommended:	Plotted By: AO
Approved:	Checked By: AC

U.S. ARMY CORPS OF ENGINEERS
NEW ORLEANS DISTRICT

CALCASIEU SHIP CHANNEL
BAR SHEET 33
CR_33_BAR_20240815_PR
15 August 2024

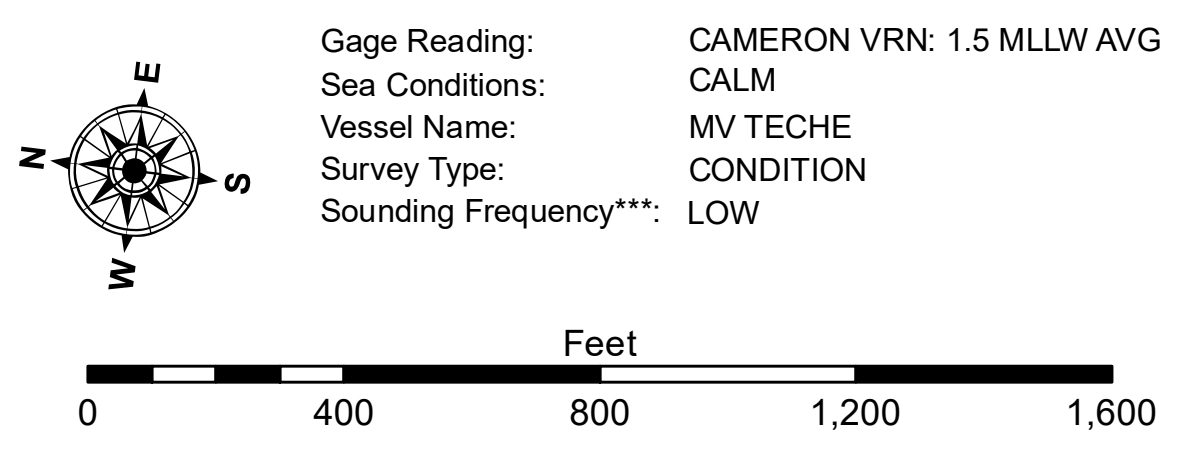
Sheet Reference Number
33 of 53

Revision Number:
4.2-20240420



LEGEND

--- Federal Navigation Channel	○ Cable Area	3 Fluff Thickness (feet)*	-16' and above
— Federal Navigation Center Line	□ Placement Area	● Shoalest Sounding**	-16' to -21'
— As-built Pipeline/Cable	□ Anchorage Area	★ Beacon, General	-21' to -26'
..... Unconfirmed Pipeline/Cable	⊗ Obstruction Point	◆ Red Navigation Buoy	-26' to -33'
— Project Depth Contour	⊙ Wrecks-Submerged	◇ Green Navigation Buoy	-33' to -39'
			-39' to -41'
			-41' to -43'
			-43' and below



NOTES: 416,000

Horizontal Coordinate System: North American Datum of 1983 (NAD83), projected to the State Plane Coordinate System (SPCS), Louisiana South Zone. Distance units in U.S. Survey Feet.

Vertical Datum: Soundings are shown in feet and indicate depths below Mean Lower Low Water Datum (MLLW). Datum Relationships for gage 73650 as of December 2013: 0.0' NAVD88 (2009.55) = 1.3' MLLW = 2.3' MLG or 0.0' MLLW = 1.0' MLG

Distances on the Calcasieu River are shown at 1 mile intervals.

The location of navigation aids are based on and provided by the U.S. Coast Guard and USACE survey crews.

2015 Aerial Photography data source: NAIP

Reference is N.O.A.A. Navigation Chart No. 11339.

* Difference between high and low frequency elevations where greater than 1.0'.
 ** Shoalest Sounding per Quarter per Reach.
 *** High frequency (200 kHz) survey data represents the first signal return at a sounding location and will include suspended solids, known as "fluff", if present. Low frequency (20 kHz) survey data normally penetrates through this "fluff" layer to depict elevations of consolidated bottom material. Low frequency accuracies may vary depending on channel conditions and fathometer settings.