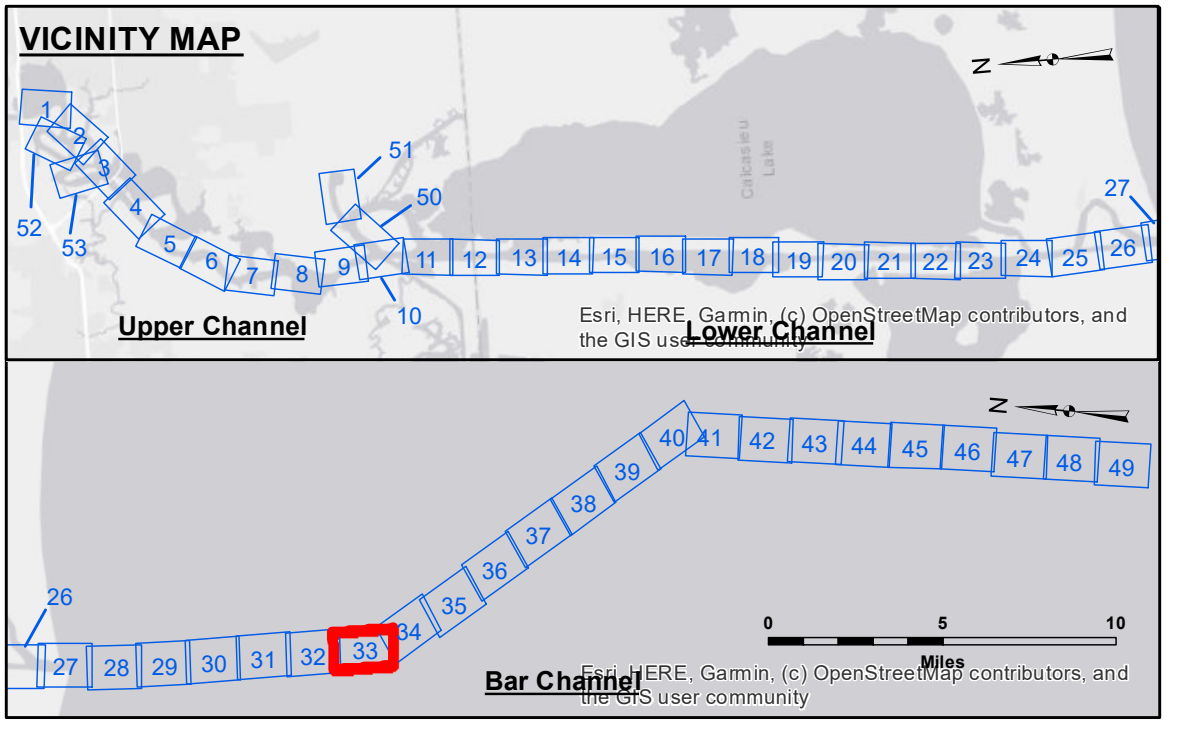


DISCLAIMER
 The United States Government furnishes these data and the recipient accepts and uses them with the express understanding that the data are provided for informational purposes only and are not to be used for any purpose other than that for which they were provided. The user is responsible for the results of any use of the data for other than the intended purpose. The application of the data for other than the intended purpose is at the user's risk. The user is responsible for the results of any use of the data for other than the intended purpose. The application of the data for other than the intended purpose is at the user's risk. The user is responsible for the results of any use of the data for other than the intended purpose. The application of the data for other than the intended purpose is at the user's risk.

Submitted:	Surveyed By: SPJS
Recommended:	Plotted By: BD
Checked By: AOJH	Chief, Survey Section
Approved:	Chief, Waterways Maintenance Section

CALCASIEU SHIP CHANNEL
BAR SHEET 33
CR_33_BAR_20241021_CS
21 October 2024

Sheet Reference Number
33 of 53



LEGEND	
	Federal Navigation Channel
	Federal Navigation Center Line
	As-built Pipeline/Cable
	Unconfirmed Pipeline/Cable
	Project Depth Contour
	Cable Area
	Placement Area
	Anchorage Area
	Obstruction Point
	Wrecks-Submerged
	3 Fluff Thickness (feet)*
	Shoalest Sounding**
	Beacon, General
	Red Navigation Buoy
	Green Navigation Buoy
	-16' and above
	-16' to -21'
	-21' to -26'
	-26' to -33'
	-33' to -39'
	-39' to -41'
	-41' to -43'
	-43' and below

NOTES: 416,000
 Horizontal Coordinate System: North American Datum of 1983 (NAD83), projected to the State Plane Coordinate System (SPCS), Louisiana South Zone. Distance units in U.S. Survey Feet.
 Vertical Datum: CAMERON VRN: 0.33 MLLW AVG.
 Soundings are shown in feet and indicate depths below Mean Lower Low Water Datum (MLLW). Datum Relationships for gage 73650 as of December 2013: 0.0' NAVD88 (2009.55) = 1.3' MLLW = 2.3' MLG or 0.0' MLLW = 1.0' MLG
 Distances on the Calcasieu River are shown at 1 mile intervals.
 The location of navigation aids are based on and provided by the U.S. Coast Guard and USACE survey crews.
 2015 Aerial Photography data source: NAIP
 Reference is N.O.A.A. Navigation Chart No. 11339.
 * Difference between high and low frequency elevations where greater than 1.0'.
 ** Shoalest Sounding per Quarter per Reach.
 *** High frequency (200 kHz) survey data represents the first signal return at a sounding location and will include suspended solids, known as "fluff", if present. Low frequency (20 kHz) survey data normally penetrates through this "fluff" layer to depict elevations of consolidated bottom material. Low frequency accuracies may vary depending on channel conditions and fathometer settings.

NOTES:
 LC CURVE DATA
 $\Delta = 30^\circ 13'$
 $D = 1^\circ 00'$
 $T = 1546.85'$
 $L = 3021.67'$
 $R = 5729.58'$