

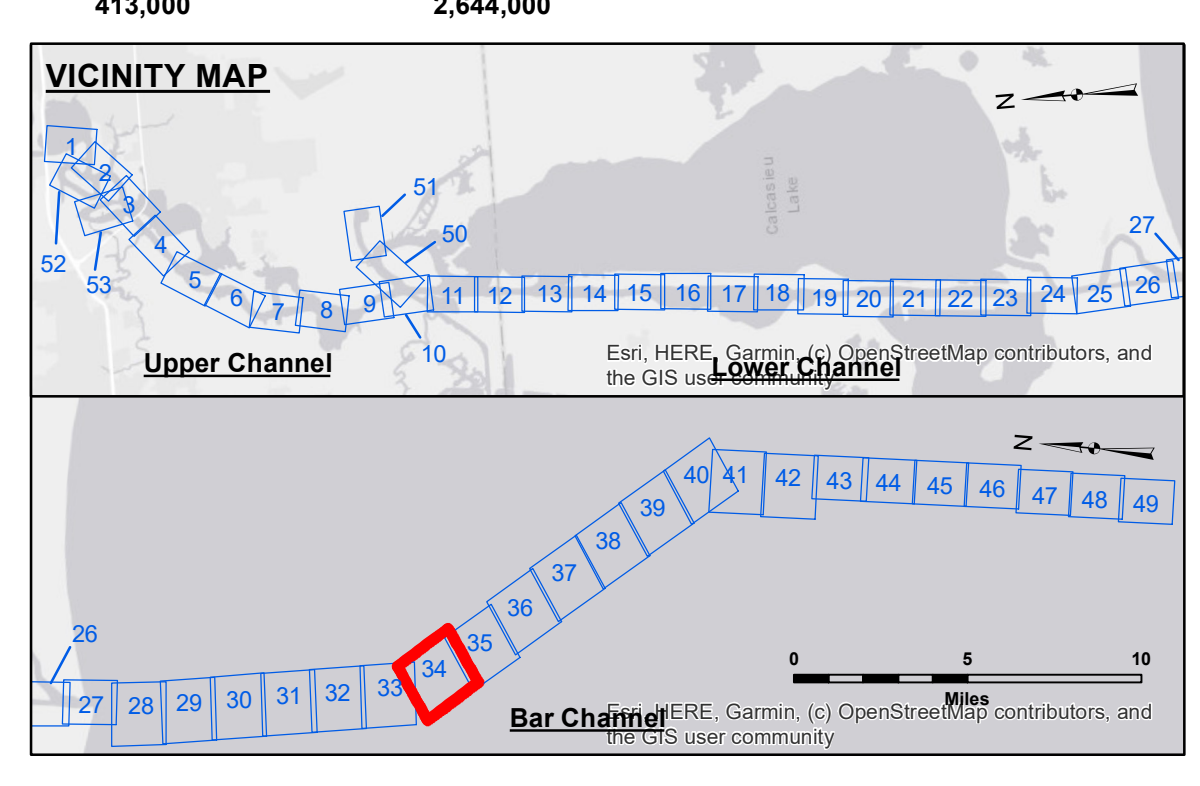
**DISCLAIMER**  
The United States Government furnishes the data provided herein for the use of the user under the terms of the Government Standard License. The user shall be responsible for the use of the data and for the accuracy of the data. The user shall be responsible for the use of the data and for the accuracy of the data. The user shall be responsible for the use of the data and for the accuracy of the data.

Submitted:	Checked:	Approved:
By: SP JS	By: BD	By: ADJ1
Position: SP JS	Position: BD	Position: ADJ1
Chief, Survey Section	Chief, Survey Section	Chief, Waterways Maintenance Section

**CALCASIEU SHIP CHANNEL**  
BAR SHEET 34  
CR\_34\_BARX\_20240528\_CS  
28 May 2024

**Sheet Reference Number**  
34 of 53

Revision Number: 42-20004039



LEGEND	
--- Federal Navigation Channel	● Cable Area
— Federal Navigation Center Line	□ Placement Area
— As-built Pipeline/Cable	□ Anchorage Area
--- Unconfirmed Pipeline/Cable	□ Obstruction Point
— Project Depth Contour	✈ Wrecks-Submerged
3 Fluff Thickness (feet)*	● Shoalest Sounding**
★ Beacon, General	★ Red Navigation Buoy
◆ Green Navigation Buoy	

**NOTE 57.000**  
Horizontal Coordinate System:  
North American Datum of 1983 (NAD83), projected to the State Plane Coordinate System (SPCS), Louisiana South Zone. Distance units in U.S. Survey Feet.

Vertical Datum:  
Soundings are shown in feet and indicate depths below Mean Lower Low Water Datum (MLLW). Datum Relationships for page 73650 as of December 2013:  
0.0' NAVD88 (2009.55) = 1.3' MLLW = 2.3' MLG or 0.0' MLLW = 1.0' MLG

Distances on the Calcasieu River are shown at 1 mile intervals.

The location of navigation aids are based on and provided by the U.S. Coast Guard and USACE survey crews.

2015 Aerial Photography data source: NAIP  
Reference is N.O.A.A. Navigation Chart No. 11339.

\* Difference between high and low frequency elevations where greater than 1.0'.  
\*\* Shoalest Sounding per Quarter per Reach.

\*\*\* High frequency (200 kHz) survey data represents the first signal return at a sounding location and will include suspended solids, known as "fluff", if present. Low frequency (20 kHz) survey data normally penetrates through this "fluff" layer to depict elevations of consolidated bottom material. Low frequency accuracies may vary depending on channel conditions and fathometer settings.

Gage Reading: CAMERON: 2.46 MLLW AVG.  
Sea Conditions: CHOPPY  
Vessel Name: MV TECHE  
Survey Type: CONDITION  
Sounding Frequency\*\*\*: HIGH/LOW