

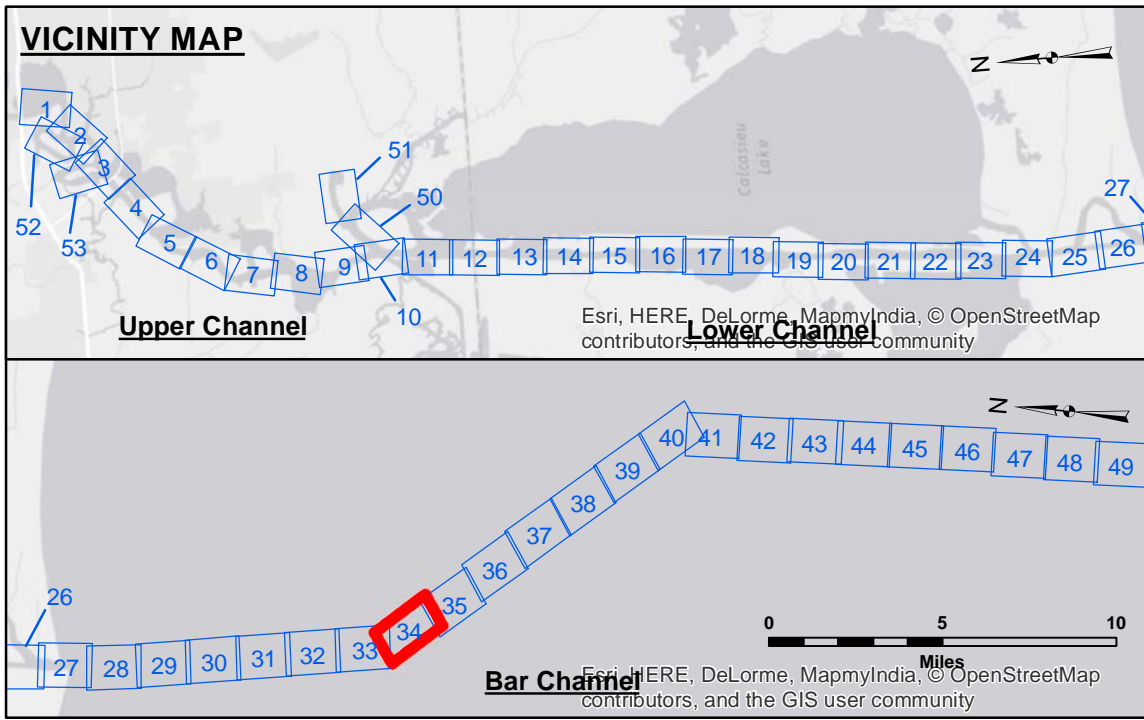
LC CURVE DATA
 $\Delta = 30^\circ 13'$
 $D = 1^\circ 00'$
 $T = 1546.85'$
 $L = 3021.67'$
 $R = 5729.58'$



DISCLAIMER
 The information depicted on this map represents the results of a hydrographic survey conducted by the U.S. Army Corps of Engineers. The data is provided for informational purposes only and is not intended to be used for navigation or other purposes. The user is responsible for the accuracy, completeness, and reliability of the data for their intended use. The Corps of Engineers does not warrant the accuracy or reliability of the data for any specific purpose. The Corps of Engineers is not responsible for any damage or liability resulting from the use of this data. The data is subject to change without notice. The user is advised to verify the data for their intended use. The Corps of Engineers is not responsible for any damage or liability resulting from the use of this data. The data is subject to change without notice. The user is advised to verify the data for their intended use.

U.S. ARMY CORPS OF ENGINEERS NEW ORLEANS DISTRICT		
Submitted:	Surveyed By: SJR, JDH	Plotted By: BTD
Recommended:	Chart Survey Section	Checked By: TAF
Approved:	Chart, Waterways Maintenance Section	

CALCASIEU SHIP CHANNEL
BAR SHEET 34
CR_34_BAR_20150331
31 March 2015



LEGEND		Color Key	
--- Federal Navigation Channel	○ Cable Area	Red	-15' and above
— Federal Navigation Center Line	□ Placement Area	Orange	-15' to -20'
— As-built Pipeline/Cable	□ Anchorage Area	Yellow	-20' to -25'
..... Unconfirmed Pipeline/Cable	⊗ Obstruction Point	Light Green	-25' to -32'
— Project Depth Contour	✶ Wrecks-Submerged	Green	-32' to -38'
	★ Beacon, General	Light Blue	-38' to -40'
	◆ Red Navigation Buoy	Dark Blue	-40' to -42'
	◆ Green Navigation Buoy	Lightest Blue	-42' and below
	□ Borrow Area		
	● Shoalest Sounding**		

NOTES:
 Horizontal Coordinate System:
 North American Datum of 1983 (NAD83), projected to the State Plane Coordinate System (SPCS), Louisiana South Zone. Distance units in U.S. Survey Feet.
 Vertical Datum:
 Soundings are shown in feet and indicate depths below Mean Low Gulf Datum (MLG).
 Datum Relationships for gage 73650 as of December 2013:
 0.0 NAVD83 (2009.55) = 1.3' MLLW = 2.3' MLG or 0.0' MLLW = 1.0' MLG
 Distances on the Calcasieu River are shown at 1 mile intervals.
 The location of navigation aids are based on and provided by the U.S. Coast Guard and USACE survey crews.
 2010 Aerial Photography data source: NAIP
 Reference is N.O.A.A. Navigation Chart No. 11339.
 ** Shoalest Sounding per Quarter per Reach.
 *** High frequency (200 kHz) survey data represents the first signal return at a sounding location and will include suspended solids, known as "fluff", if present. Low frequency (20 kHz) survey data normally penetrates through this "fluff" layer to depict elevations of consolidated bottom material. Low frequency accuracies may vary depending on channel conditions and fathometer settings.

Gage Reading: CAMERON: 2.0 MLG AVG.
 Sea Conditions: CALM
 Vessel Name: MV TECHE
 Survey Type: CONDITION
 Sounding Frequency***: LOW

Scale: 0 to 1,600 Feet

Sheet Reference Number
34 of 53