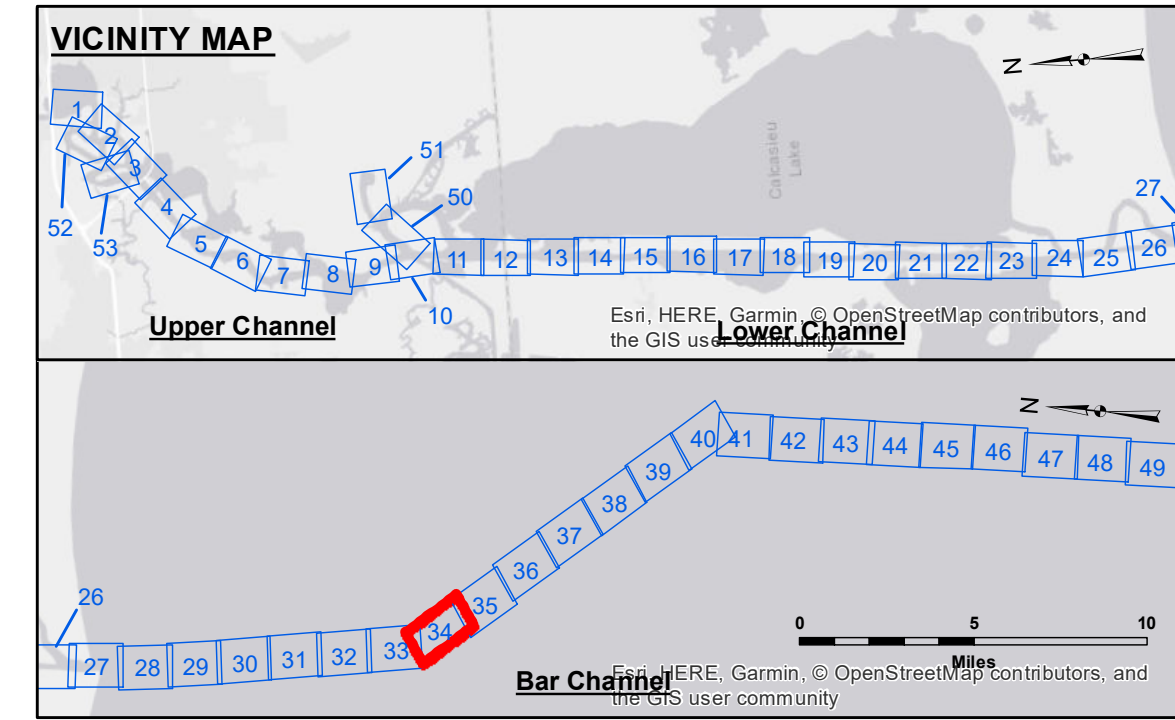


LC CURVE DATA
 $\Delta = 30^\circ 13'$
 $D = 1^\circ 00'$
 $T = 1546.85'$
 $L = 3021.67'$
 $R = 5729.58'$

GULF OF MEXICO

SITE NO. 2 DISPOSAL AREA



LEGEND	
--- Federal Navigation Channel	○ Cable Area
— Federal Navigation Center Line	□ Placement Area
— As-built Pipeline/Cable	⊗ Anchorage Area
..... Unconfirmed Pipeline/Cable	⊗ Obstruction Point
— Project Depth Contour	⊗ Wrecks-Submerged
3 Fluff Thickness (feet)*	★ Beacon, General
● Shoalest Sounding**	◆ Red Navigation Buoy
○ Green Navigation Buoy	◆ Green Navigation Buoy

NOTES:
 Horizontal Coordinate System: North American Datum of 1983 (NAD83), projected to the State Plane Coordinate System (SPCS), Louisiana South Zone. Distance units in U.S. Survey Feet.
 Vertical Datum: CAMERON: 2.28 MLLW AVG.
 Soundings are shown in feet and indicate depths below Mean Lower Low Water Datum (MLLW). Datum Relationships for gage 73650 as of December 2013: 0.0' NAVD88 (2009.55) = 1.3' MLLW = 2.3' MLG or 0.0' MLLW = 1.0' MLG
 Distances on the Calcasieu River are shown at 1 mile intervals.
 The location of navigation aids are based on and provided by the U.S. Coast Guard and USACE survey crews.
 2015 Aerial Photography data source: NAIP
 Reference is N.O.A.A. Navigation Chart No. 11339.
 * Difference between high and low frequency elevations where greater than 1.0'.
 ** Shoalest Sounding per Quarter per Reach.
 *** High frequency (200 kHz) survey data represents the first signal return at a sounding location and will include suspended solids, known as "fluff", if present. Low frequency (20 kHz) survey data normally penetrates through this "fluff" layer to depict elevations of consolidated bottom material. Low frequency accuracies may vary depending on channel conditions and fathometer settings.



DISCLAIMER
 The information depicted on this map represents the results of a hydrographic survey conducted by the United States Army Corps of Engineers. The data represents the results of a collection of soundings for a specific US Army Corps of Engineers project. The data is not intended for use in any other project, and its use for any other purpose is at the user's risk. The user is responsible for the accuracy, reliability, usability, or suitability of the data for any particular purpose. The user is responsible for the accuracy, reliability, usability, or suitability of the data for any particular purpose. The user is responsible for the accuracy, reliability, usability, or suitability of the data for any particular purpose. The user is responsible for the accuracy, reliability, usability, or suitability of the data for any particular purpose.

Submitted:	RYLAND/DAMIS
Recommended:	BD
Checked By:	AC

U.S. ARMY CORPS OF ENGINEERS
 NEW ORLEANS DISTRICT
 Chief, Waterways Maintenance Section

CALCASIEU SHIP CHANNEL
BAR SHEET 34
CR_34_BAR_20190530_CS
30 May 2019

Sheet Reference Number
34 of 53