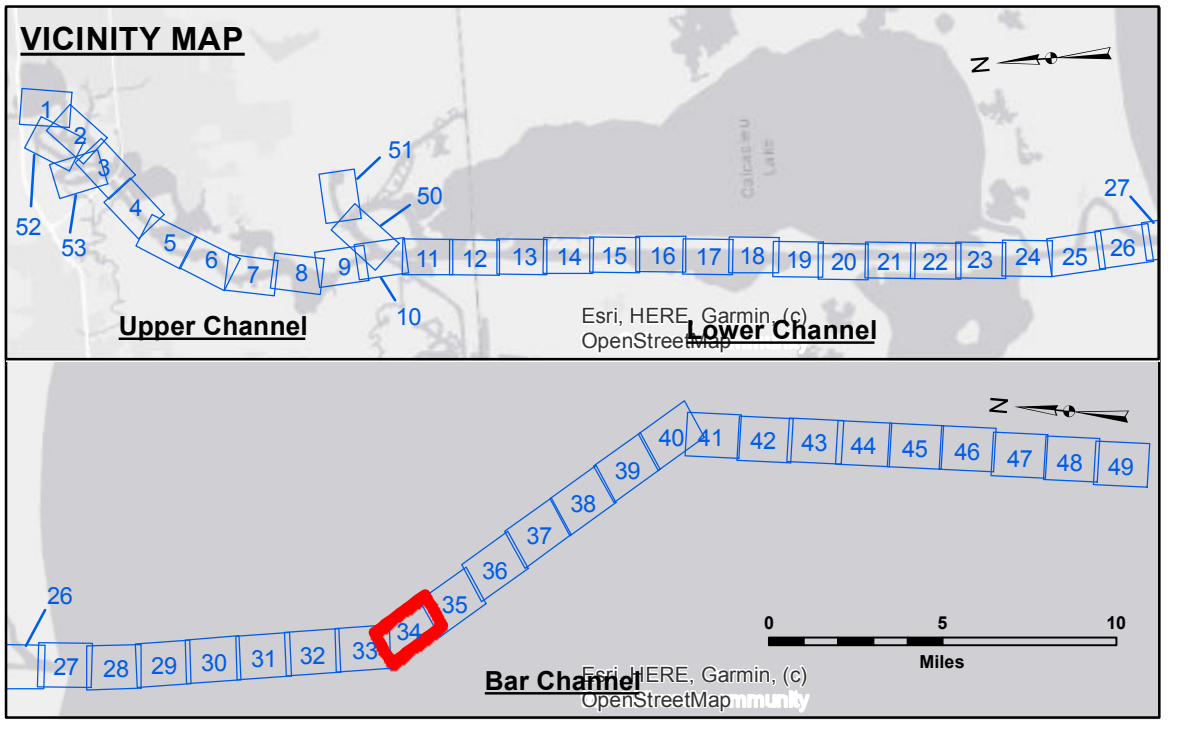


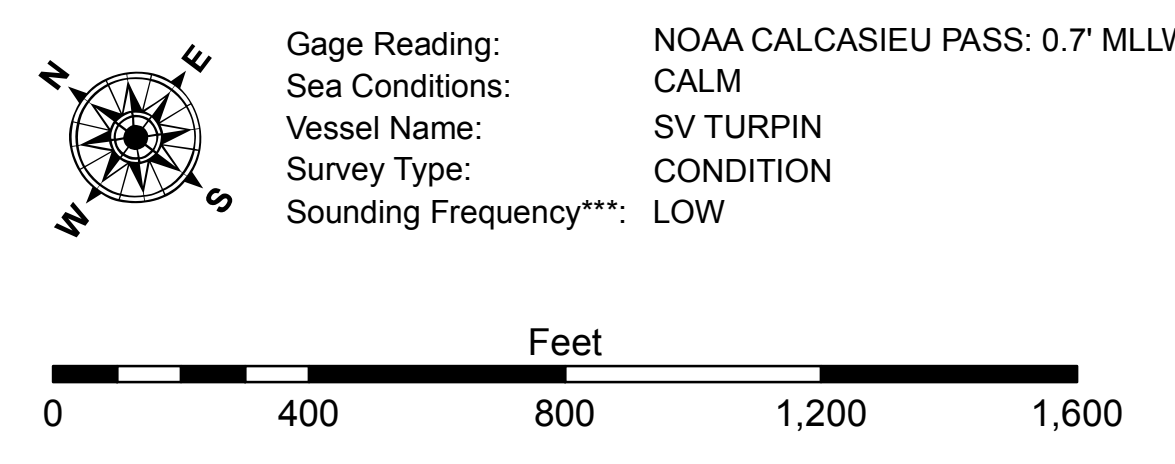
**DISCLAIMER**  
 The United States Government furnishes these data and the recipient accepts and uses them with the express understanding that the data are not intended for use in any way other than that for which they were prepared. The user is responsible for the accuracy, completeness, readability, usability or suitability for any particular purpose of the data. The user shall not be held liable for any damage or injury resulting from the use of these data. The recipient may not transfer these data to others without also transferring the Disclaimer. The information depicted on the map represents the results of a survey conducted on or about the date shown. The recipient is advised to consider the general condition existing at that time. The recipient may not transfer these data to others without also transferring the Disclaimer. The information depicted on the map represents the results of a survey conducted on or about the date shown. The recipient is advised to consider the general condition existing at that time. The recipient may not transfer these data to others without also transferring the Disclaimer.

U.S. ARMY CORPS OF ENGINEERS NEW ORLEANS DISTRICT	
Submitted:	Surveyed By: SWG
Recommended: Chief, Survey Section	Plotted By: JH
Approved: Chief, Waterways Maintenance Section	Checked By: JH

**CALCASIEU SHIP CHANNEL**  
**BAR SHEET 34**  
**CR\_34\_BAR\_20210830\_CS\_POSTIDA**  
**30 August 2021**



LEGEND	
--- Federal Navigation Channel	○ Cable Area
— Federal Navigation Center Line	□ Placement Area
— As-built Pipeline/Cable	⊗ Obstruction Point
..... Unconfirmed Pipeline/Cable	⚓ Wrecks-Submerged
— Project Depth Contour	3 Fluff Thickness (feet)*
	● Shoalest Sounding**
	★ Beacon, General
	◆ Red Navigation Buoy
	◇ Green Navigation Buoy
	■ -16' and above
	■ -16' to -21'
	■ -21' to -26'
	■ -26' to -33'
	■ -33' to -39'
	■ -39' to -41'
	■ -41' to -43'
	■ -43' and below



**NOTES:**  
 Horizontal Coordinate System: North American Datum of 1983 (NAD83), projected to the State Plane Coordinate System (SPCS), Louisiana South Zone. Distance units in U.S. Survey Feet.  
 Vertical Datum: Soundings are shown in feet and indicate depths below Mean Lower Low Water Datum (MLLW). Datum Relationships for gage 73650 as of December 2013: 0.0' NAVD88 (2009.55) = 1.3' MLLW = 2.3' MLG or 0.0' MLLW = 1.0' MLG  
 Distances on the Calcasieu River are shown at 1 mile intervals.  
 The location of navigation aids are based on and provided by the U.S. Coast Guard and USACE survey crews.  
 2015 Aerial Photography data source: NAIP  
 Reference is N.O.A.A. Navigation Chart No. 11339.  
 \* Difference between high and low frequency elevations where greater than 1.0'.  
 \*\* Shoalest Sounding per Quarter per Reach.  
 \*\*\* High frequency (200 kHz) survey data represents the first signal return at a sounding location and will include suspended solids, known as "fluff", if present. Low frequency (20 kHz) survey data normally penetrates through this "fluff" layer to depict elevations of consolidated bottom material. Low frequency accuracies may vary depending on channel conditions and fathometer settings.

**Sheet Reference Number**  
**34 of 53**  
 Revision Number: 4-2020(4/20)