

**LC CURVE DATA**  
 $\Delta = 30^{\circ} 13'$   
 $D = 1^{\circ} 00'$   
 $T = 1546.85'$   
 $L = 3021.67'$   
 $R = 5729.58'$

**GULF OF MEXICO**

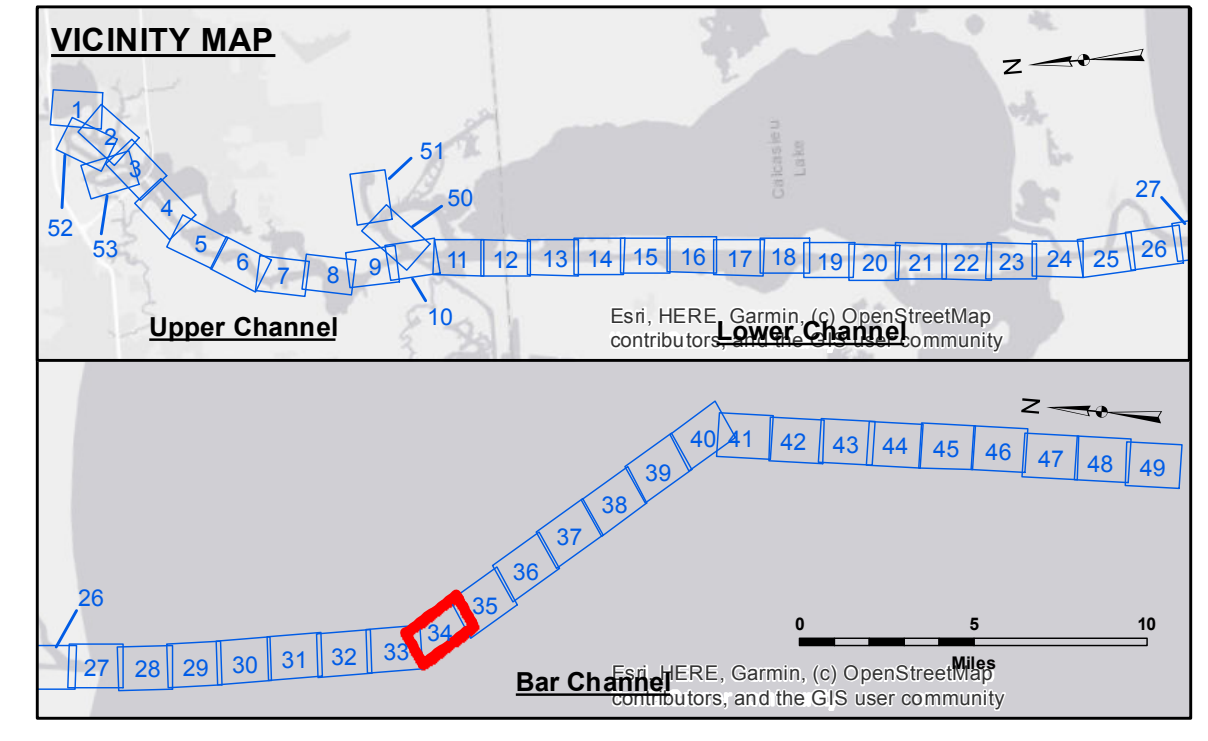
**SITE NO. 2  
DISPOSAL AREA**



**DISCLAIMER**  
 Distribution Liability: The data represents the results of data collection/processing for a specific US Army Corps of Engineers project and is only valid for its intended use, control, time and accuracy specifications. The user is responsible for the results obtained. Application of the data for other than its intended purpose. Data Constitutes Hydrographic Survey Data is subject to change rapidly due to several factors including but not limited to dredging operations, natural processes, and other activities. The user is advised to verify the data for accuracy before use. The user is not to be held liable for any errors or omissions in the data. The information depicted on this map represents the results of a hydrographic survey conducted on or about the date of the survey. The information is not to be used for any purpose other than that for which it was collected and is not to be construed to represent the general condition existing at that time.

Submitted:	Checked By:
Recommended:	Checked By:
Approved:	Checked By:
Chief, Waterways Maintenance Section	

**CALCASIEU SHIP CHANNEL  
 BAR SHEET 34  
 CR\_34\_BAR\_20210908\_CS\_POSTIDA  
 08 September 2021**



**LEGEND**

Federal Navigation Channel	Cable Area	Fluff Thickness (feet)*	-16' and above
Federal Navigation Center Line	Placement Area	Shoalest Sounding**	-16' to -21'
As-built Pipeline/Cable	Anchorage Area	Beacon, General	-21' to -26'
Unconfirmed Pipeline/Cable	Obstruction Point	Red Navigation Buoy	-26' to -33'
Project Depth Contour	Wrecks-Submerged	Green Navigation Buoy	-33' to -39'
			-39' to -41'
			-41' to -43'
			-43' and below

**NOTES:**  
 Horizontal Coordinate System: North American Datum of 1983 (NAD83), projected to the State Plane Coordinate System (SPCS), Louisiana South Zone. Distance units in U.S. Survey Feet.  
 Vertical Datum: Soundings are shown in feet and indicate depths below Mean Lower Low Water Datum (MLLW). Datum Relationships for gage 73650 as of December 2013: 0.0' NAVD88 (2009.55) = 1.3' MLLW = 2.3' MLG or 0.0' MLLW = 1.0' MLG  
 Distances on the Calcasieu River are shown at 1 mile intervals.  
 The location of navigation aids are based on and provided by the U.S. Coast Guard and USACE survey crews.  
 2015 Aerial Photography data source: NAIP  
 Reference is N.O.A.A. Navigation Chart No. 11339.  
 \* Difference between high and low frequency elevations where greater than 1.0'.  
 \*\* Shoalest Sounding per Quarter per Reach.  
 \*\*\* High frequency (200 kHz) survey data represents the first signal return at a sounding location and will include suspended solids, known as "fluff", if present. Low frequency (20 kHz) survey data normally penetrates through this "fluff" layer to depict elevations of consolidated bottom material. Low frequency accuracies may vary depending on channel conditions and fathometer settings.

Gage Reading: NOAA CALCASIEU PASS: 1.6' MLLW  
 Sea Conditions: CALM  
 Vessel Name: SV TURPIN  
 Survey Type: CONDITION  
 Sounding Frequency\*\*\*: LOW

**Sheet Reference Number**  
 34 of 53  
 Revision Number: 4.2-20220820