

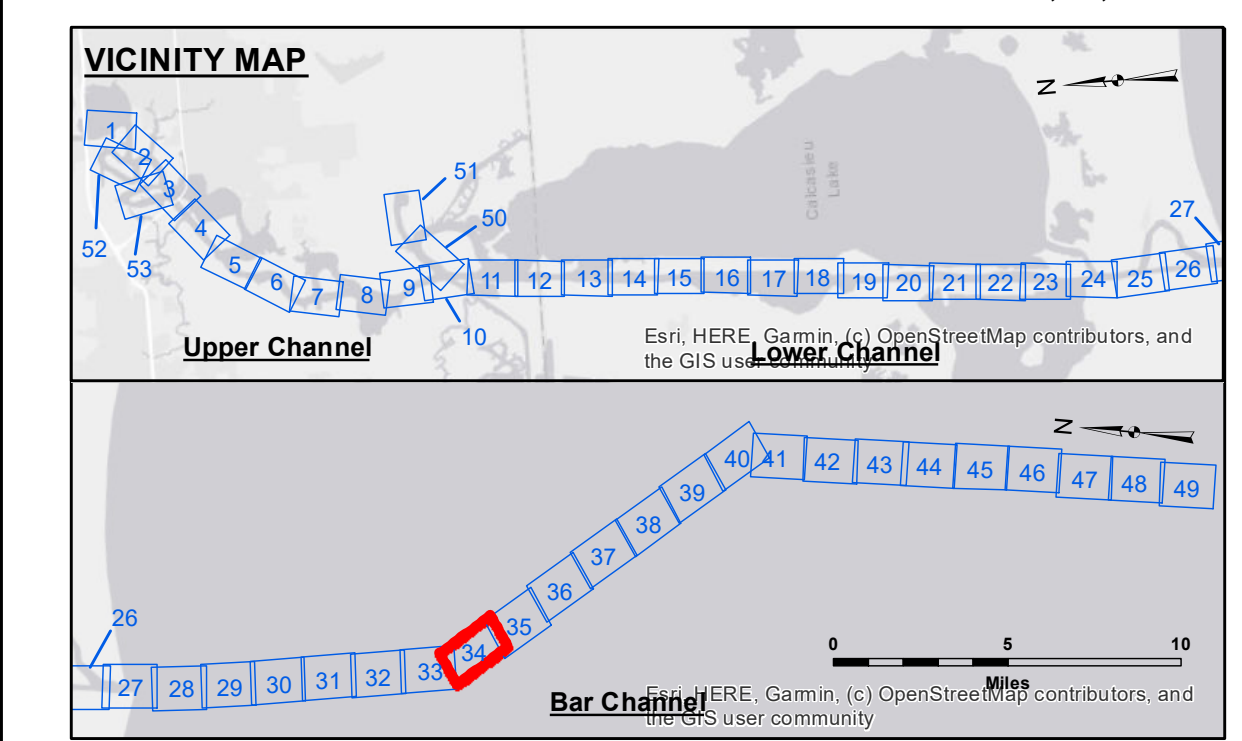
NOTICE: The United States Government furnishes these data and the recipient accepts and uses them with the express understanding that the United States Government makes no warranty, expressed or implied, concerning the accuracy, completeness, reliability, usability, or suitability for any particular purpose of the data. These data are provided as a reference only and are not to be used for navigation or other purposes. The user is responsible for the accuracy, completeness, reliability, usability, or suitability for any particular purpose of the data. These data are provided as a reference only and are not to be used for navigation or other purposes. The user is responsible for the accuracy, completeness, reliability, usability, or suitability for any particular purpose of the data. These data are provided as a reference only and are not to be used for navigation or other purposes. The user is responsible for the accuracy, completeness, reliability, usability, or suitability for any particular purpose of the data.

Submitted:	Surveyed By:	SP-JS
	Plotted By:	JH
	Checked By:	JH
U.S. ARMY CORPS OF ENGINEERS NEW ORLEANS DISTRICT		

CALCASIEU SHIP CHANNEL
BAR SHEET 34
CR_34_BAR_20241210_AD
10 December 2024

Sheet Reference Number
34 of 53

Revision Number:
 4.2-202/064 20



LEGEND

--- Federal Navigation Channel	● Cable Area	3 Fluff Thickness (feet)*	■ -16' and above
— Federal Navigation Center Line	□ Placement Area	● Shoalest Sounding**	■ -16' to -21'
— As-built Pipeline/Cable	□ Anchorage Area	★ Beacon, General	■ -21' to -26'
..... Unconfirmed Pipeline/Cable	⊗ Obstruction Point	◆ Red Navigation Buoy	■ -26' to -33'
— Project Depth Contour	✈ Wrecks-Submerged	◆ Green Navigation Buoy	■ -33' to -39'
			■ -39' to -41'
			■ -41' to -43'
			■ -43' and below

NOTES:

Horizontal Coordinate System: North American Datum of 1983 (NAD83), projected to the State Plane Coordinate System (SPCS), Louisiana South Zone. Distance units in U.S. Survey Feet.

Vertical Datum: CAMERON VRN: 1.54 MLLW AVG
 CHOPPY
 MV TECHE
 CONDITION
 Sounding Frequency***: LOW

The location of navigation aids are based on and provided by the U.S. Coast Guard and USACE survey crews.

2015 Aerial Photography data source: NAIP
 Reference is N.O.A.A. Navigation Chart No. 11339.
 * Difference between high and low frequency elevations where greater than 1.0'.
 ** Shoalest Sounding per Quarter per Reach.
 *** High frequency (200 kHz) survey data represents the first signal return at a sounding location and will include suspended solids, known as "fluff", if present. Low frequency (20 kHz) survey data normally penetrates through this "fluff" layer to depict elevations of consolidated bottom material. Low frequency accuracies may vary depending on channel conditions and bathymeter settings.

