

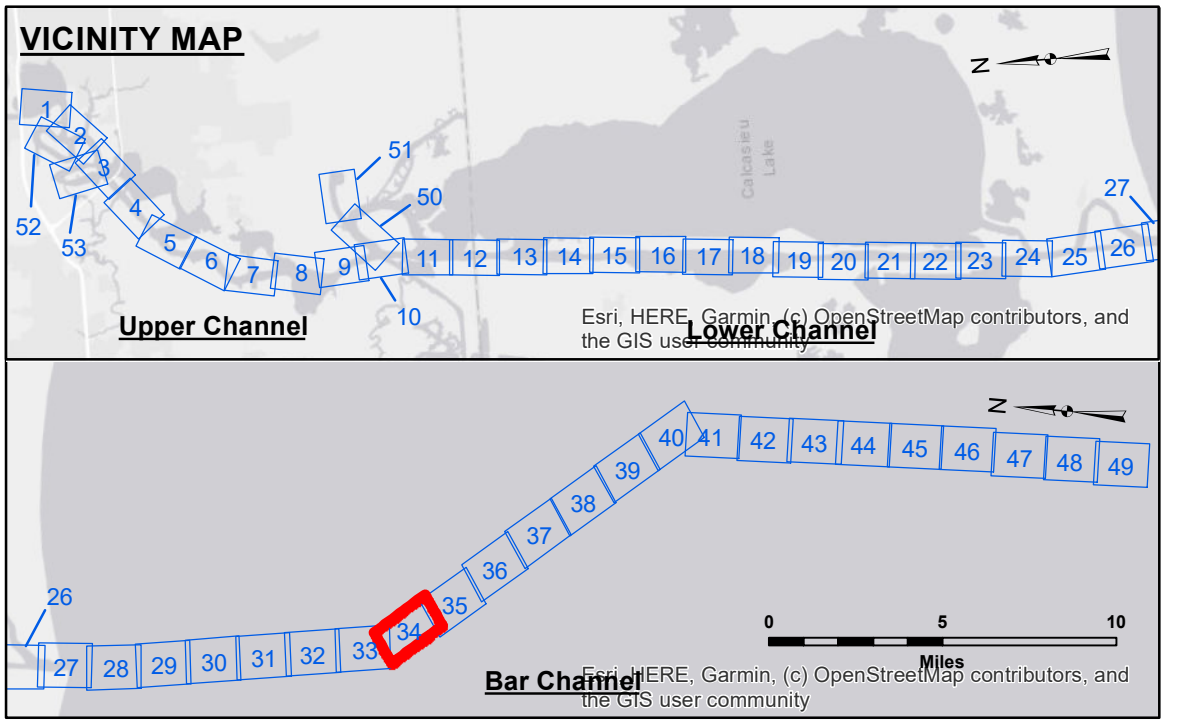
**DISCLAIMER**

The information depicted on this map represents the results of a hydrographic survey conducted by the U.S. Army Corps of Engineers. The user is responsible for the accuracy, completeness, reliability, usability, or suitability for any particular purpose of the information. The user is responsible for the accuracy, completeness, reliability, usability, or suitability for any particular purpose of the information. The user is responsible for the accuracy, completeness, reliability, usability, or suitability for any particular purpose of the information. The user is responsible for the accuracy, completeness, reliability, usability, or suitability for any particular purpose of the information.

Submitted:	Surveyed By: SP-JS	Plotted By: BD	Checked By: AD/JH
Recommended:	Chief, Survey Section		
Approved:	Chief, Waterways Maintenance Section		

U.S. ARMY CORPS OF ENGINEERS  
NEW ORLEANS DISTRICT

**CALCASIEU SHIP CHANNEL  
BAR SHEET 34  
CR\_34\_BAR\_20250116\_CS  
16 January 2025**



**LEGEND**

--- Federal Navigation Channel	○ Cable Area	3 Fluff Thickness (feet)*	-16' and above
— Federal Navigation Center Line	□ Placement Area	● Shoalest Sounding**	-16' to -21'
— As-built Pipeline/Cable	⊗ Anchorage Area	★ Beacon, General	-21' to -26'
..... Unconfirmed Pipeline/Cable	⊗ Obstruction Point	◆ Red Navigation Buoy	-26' to -33'
— Project Depth Contour	⊗ Wrecks-Submerged	◆ Green Navigation Buoy	-33' to -39'
			-39' to -41'
			-41' to -43'
			-43' and below

**NOTES:**

Horizontal Coordinate System: North American Datum of 1983 (NAD83), projected to the State Plane Coordinate System (SPCS), Louisiana South Zone. Distance units in U.S. Survey Feet.

Vertical Datum: CAMERON VRN: 0.13 MLLW

Gage Reading: CHOPPY

Sea Conditions: MV TECHE

Vessel Name: CONDITION

Survey Type: LOW

Sounding Frequency\*\*\*: LOW

Distances on the Calcasieu River are shown at 1 mile intervals.

The location of navigation aids are based on and provided by the U.S. Coast Guard and USACE survey crews.

2015 Aerial Photography data source: NAIP

Reference is N.O.A. Navigation Chart No. 11339.

\* Difference between high and low frequency elevations where greater than 1.0'.  
 \*\* Shoalest Sounding per Quarter per Reach.  
 \*\*\* High frequency (200 kHz) survey data represents the first signal return at a sounding location and will include suspended solids, known as "fluff", if present. Low frequency (20 kHz) survey data normally penetrates through this "fluff" layer to depict elevations of consolidated bottom material. Low frequency accuracies may vary depending on channel conditions and fathometer settings.

**Sheet Reference Number**  
34 of 53

Revision Number: 4.2-20240420