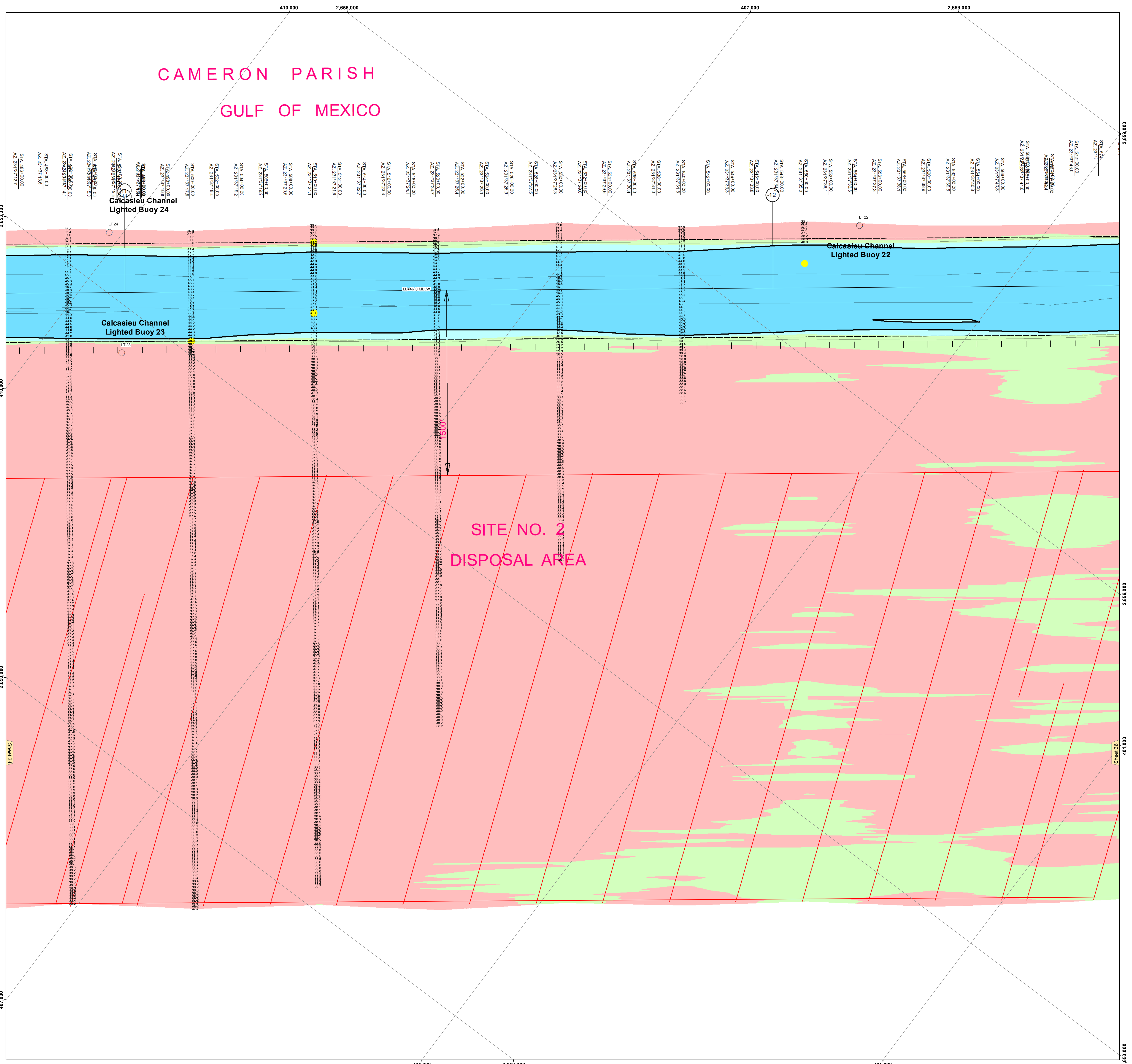


CAMERON PARISH
GULF OF MEXICO

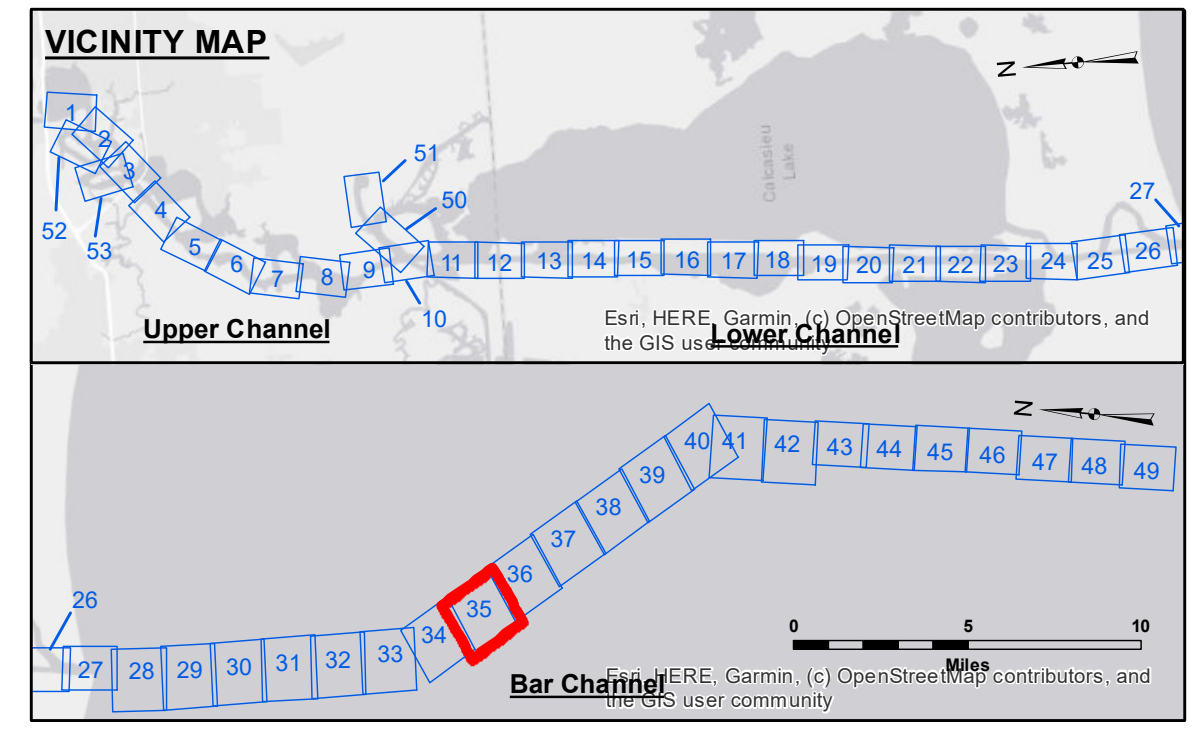


DISCLAIMER
The United States Government makes no warranty, express or implied, regarding the accuracy, reliability, or completeness of the information contained herein. The user is responsible for the results of any use of the information contained herein. The user is also responsible for the results of any use of the information contained herein. The user is also responsible for the results of any use of the information contained herein. The user is also responsible for the results of any use of the information contained herein.

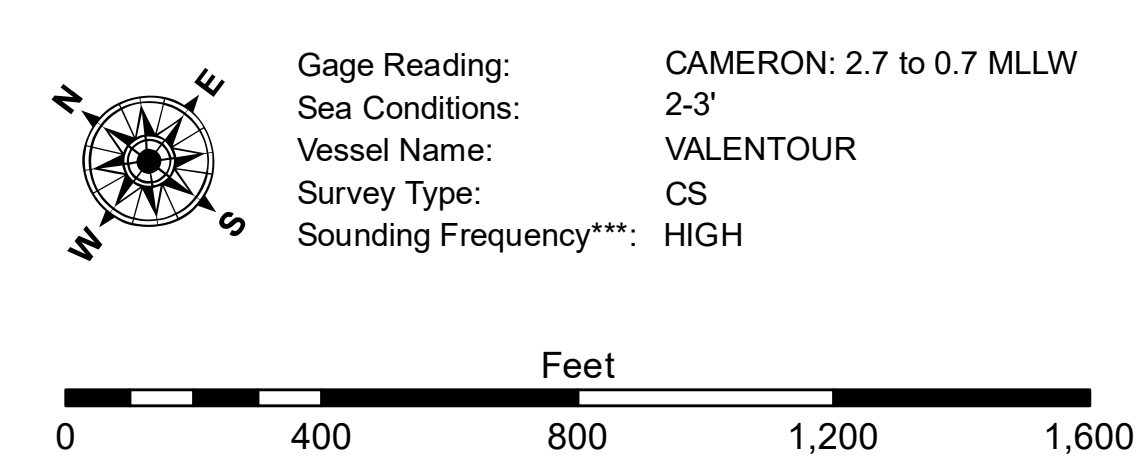
Submitted:	Checked By:
Approved:	AO

**CALCASIEU SHIP CHANNEL
BAR SHEET 35
CR_35_BARX_20190731_CS
31 July 2019**

**Sheet Reference Number
35 of 53**



LEGEND	
--- Federal Navigation Channel	● Cable Area
— Federal Navigation Center Line	□ Placement Area
— As-built Pipeline/Cable	□ Anchorage Area
--- Unconfirmed Pipeline/Cable	□ Obstruction Point
— Project Depth Contour	✈ Wrecks-Submerged
3 Fluff Thickness (feet)*	● Shoalest Sounding**
★ Beacon, General	★ Red Navigation Buoy
◆ Green Navigation Buoy	



NOTES:
Horizontal Coordinate System:
North American Datum of 1983 (NAD83), projected to the State Plane Coordinate System (SPCS), Louisiana South Zone. Distance units in U.S. Survey Feet.
Vertical Datum:
Soundings are shown in feet and indicate depths below Mean Lower Low Water Datum (MLLW). Datum Relationships for page 73650 as of December 2013:
0.0' NAVD88 (2009.55) = 1.3' MLLW = 2.3' MLG or 0.0' MLLW = 1.0' MLG
Distances on the Calcasieu River are shown at 1 mile intervals.
The location of navigation aids are based on and provided by the U.S. Coast Guard and USACE survey crews.
2015 Aerial Photography data source: NAIP
Reference is N.O.A. Navigation Chart No. 11339.
* Difference between high and low frequency elevations where greater than 1.0'.
** Shoalest Sounding per Quarter per Reach.
*** High frequency (200 kHz) survey data represents the first signal return at a sounding location and will include suspended solids, known as "fluff", if present. Low frequency (20 kHz) survey data normally penetrates through this "fluff" layer to depict elevations of consolidated bottom material. Low frequency accuracies may vary depending on channel conditions and fathometer settings.