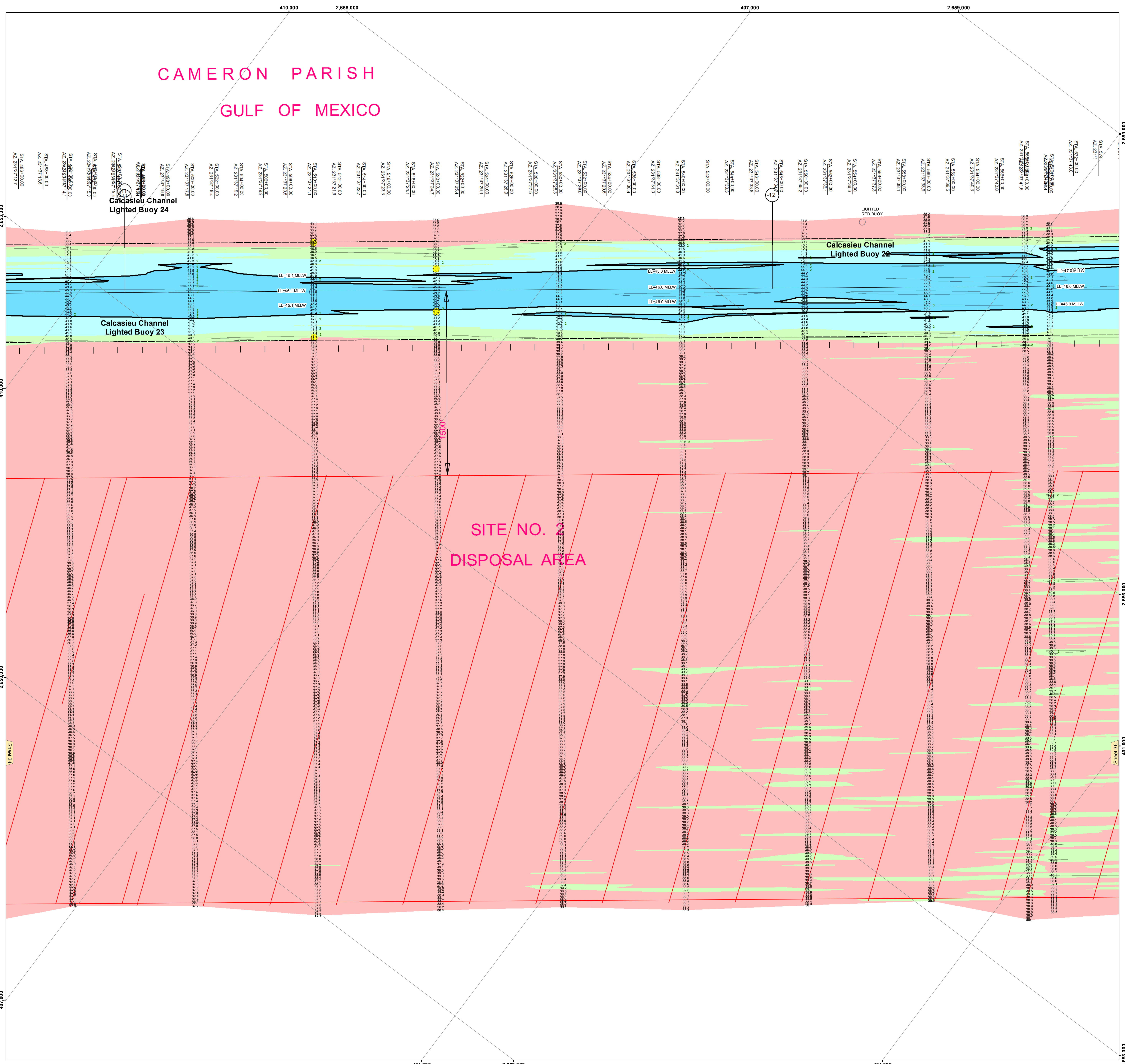


CAMERON PARISH
GULF OF MEXICO



US Army Corps of Engineers
District: CEMVN

DISCLAIMER: The United States Government...
The information depicted on this map represents the results of a...
The user is responsible for the safety of any use...

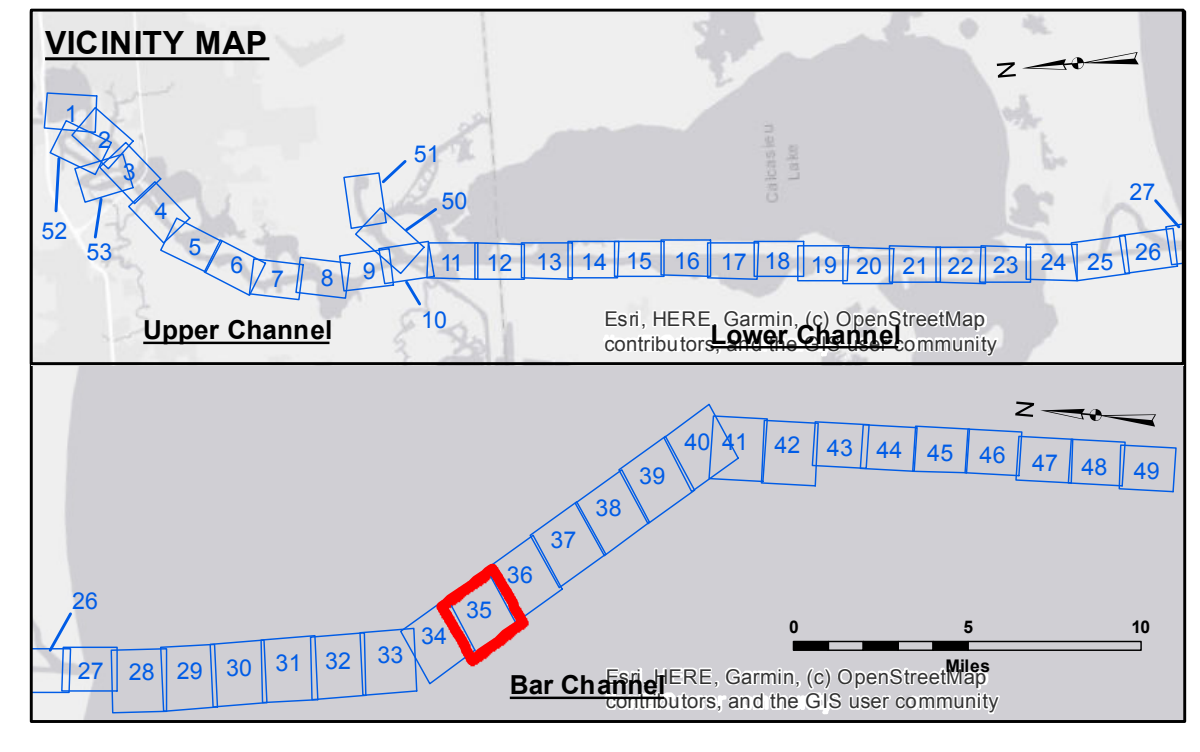
U.S. ARMY CORPS OF ENGINEERS
NEW ORLEANS DISTRICT

Submitted:	SPPS
Recommended:	JH
Checked By:	JH
Chart:	Waterways Maintenance Section

CALCASIEU SHIP CHANNEL
BAR SHEET 35
CR_35_BAPX_20220301_CS
01 March 2022

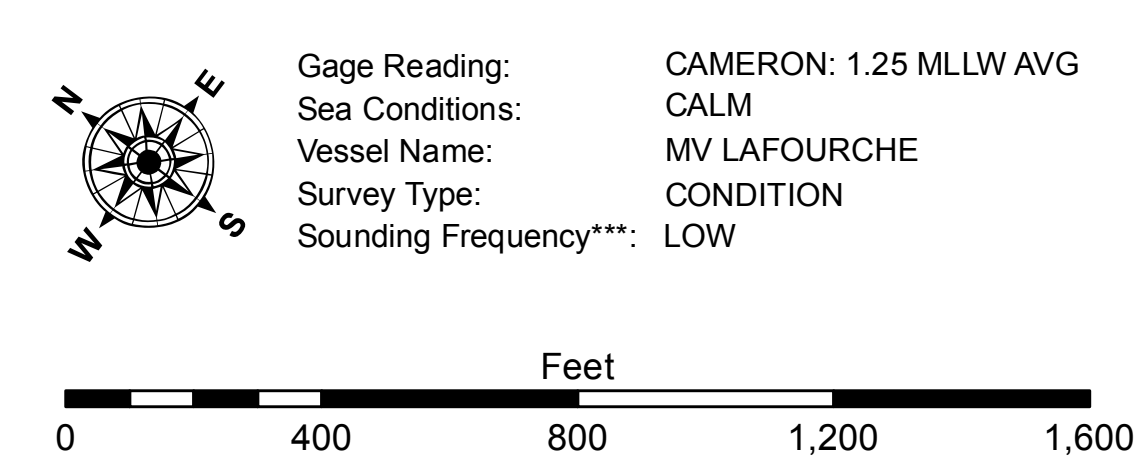
Sheet Reference Number
35 of 53

Revision Number:
4-2-2009(03)



LEGEND

--- Federal Navigation Channel	○ Cable Area	3 Fluff Thickness (feet)*	-16' and above
— Federal Navigation Center Line	□ Placement Area	● Shoalest Sounding**	-21' to -21'
— As-built Pipeline/Cable	□ Anchorage Area	★ Beacon, General	-26' to -26'
--- Unconfirmed Pipeline/Cable	□ Obstruction Point	★ Red Navigation Buoy	-33' to -39'
— Project Depth Contour	★ Wrecks-Submerged	★ Green Navigation Buoy	-39' to -41'
			-41' to -43'
			-43' and below



NOTES:
Horizontal Coordinate System:
North American Datum of 1983 (NAD83), projected to the State Plane
Coordinate System (SPCS), Louisiana South Zone. Distance units in U.S. Survey Feet.
Vertical Datum:
Soundings are shown in feet and indicate depths below Mean Lower Low Water Datum (MLLW).
Datum Relationships for gage 73650 as of December 2013:
0.0' NAVD88 (2009.55) = 1.3' MLLW = 2.3' MLG or 0.0' MLLW = 1.0' MLG
Distances on the Calcasieu River are shown at 1 mile intervals.
The location of navigation aids are based on and provided by the U.S. Coast Guard and USACE survey crews.
2015 Aerial Photography data source: NAIP
Reference is N.O.A.A. Navigation Chart No. 11339.
* Difference between high and low frequency elevations where greater than 1.0'.
** Shoalest Sounding per Quarter per Reach.
*** High frequency (200 kHz) survey data represents the first signal return at a sounding location and will include suspended solids, known as "fluff", if present. Low frequency (20 kHz) survey data normally penetrates through this "fluff" layer to depict elevations of consolidated bottom material. Low frequency accuracies may vary depending on channel conditions and fathometer settings.