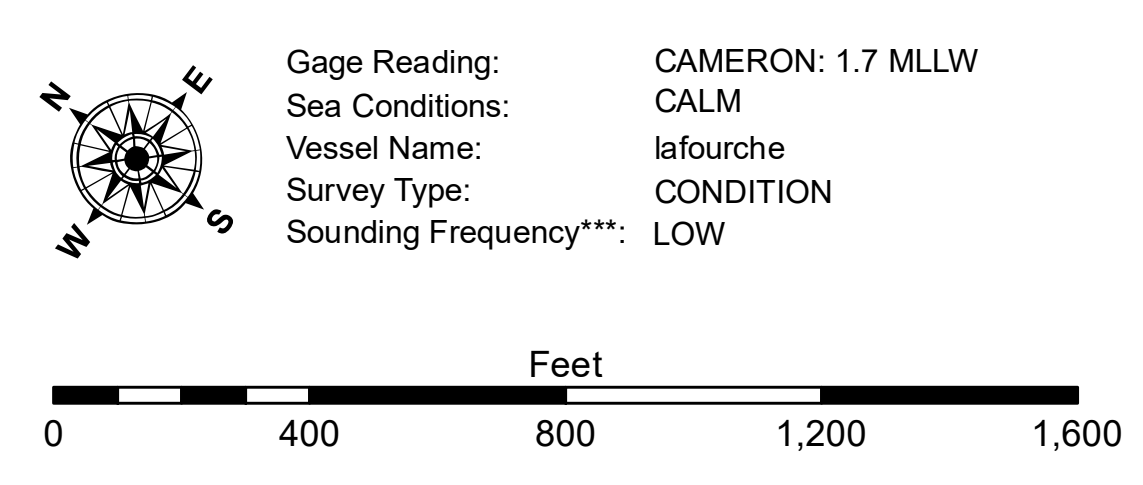


**LEGEND**

--- Federal Navigation Channel	○ Cable Area	3 Fluff Thickness (feet)*	-16' and above
— Federal Navigation Center Line	□ Placement Area	● Shoalest Sounding**	-16' to -21'
— As-built Pipeline/Cable	⊗ Anchorage Area	★ Beacon, General	-21' to -26'
..... Unconfirmed Pipeline/Cable	⊗ Obstruction Point	◆ Red Navigation Buoy	-26' to -33'
— Project Depth Contour	⊗ Wrecks-Submerged	◆ Green Navigation Buoy	-33' to -39'
			-39' to -41'
			-41' to -43'
			-43' and below



**DISCLAIMER**

Accession: The United States Government furnishes these data and the recipient accepts and uses them with the express understanding that the data are not to be used for any purpose other than that for which they were prepared, or applied for any purpose other than that for which they were prepared, or applied for any purpose other than that for which they were prepared. The user is responsible for the results obtained from the use of these data. The user is responsible for the results obtained from the use of these data. The user is responsible for the results obtained from the use of these data.

**US Army Corps of Engineers District: CEMVN**

**U.S. ARMY CORPS OF ENGINEERS  
NEW ORLEANS DISTRICT**

Submitted:	Surveyed By: PS, JH
Recommended:	Plotted By: AO
Approved:	Checked By: AO

**CALCASIEU SHIP CHANNEL  
BAR SHEET 35  
CR\_35\_BAR\_20180424\_BD  
24 April 2018**

**Sheet Reference Number  
35 of 53**