

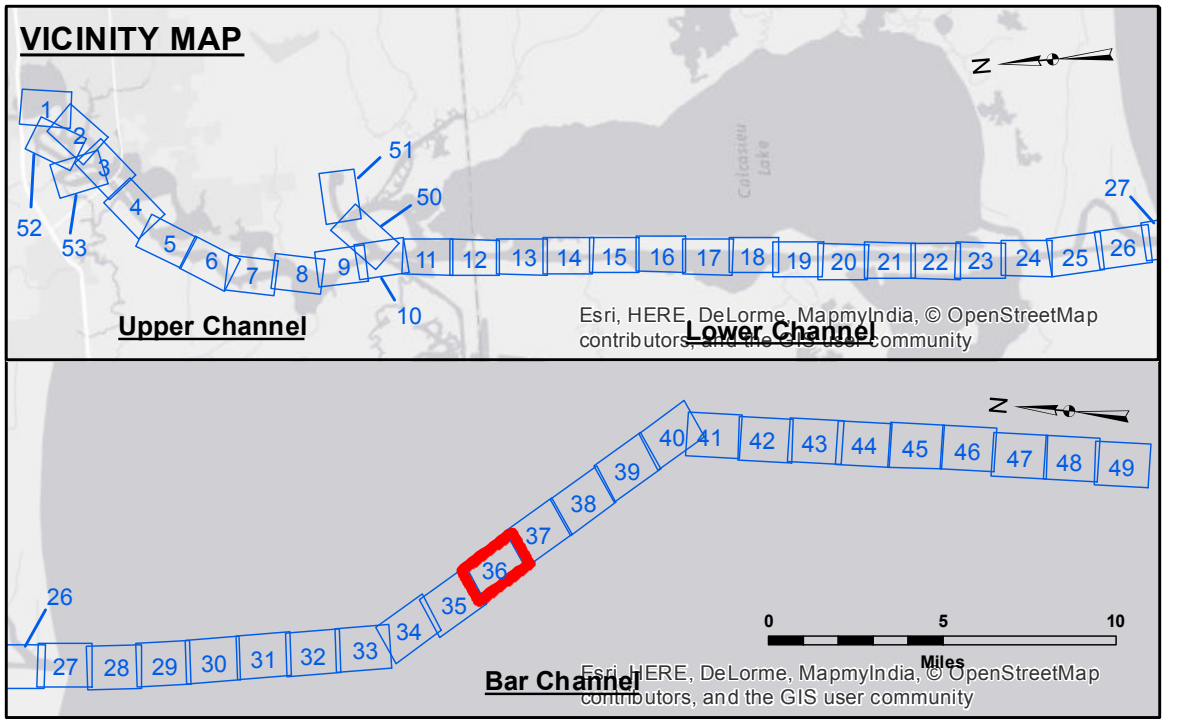
**DISCLAIMER**

The United States Government furnishes these data and the recipient accepts and uses them with the express understanding that the data are not warranted for any particular purpose of the recipient, and that the recipient is responsible for the accuracy, completeness, reliability, usability or suitability for any particular purpose of the recipient. The information depicted on this map represents the results of a hydrographic survey conducted by the United States Army Corps of Engineers. The information is provided for informational purposes only and is not intended to be used for any other purpose. The user is responsible for the accuracy, completeness, reliability, usability or suitability for any particular purpose of the recipient. The information depicted on this map represents the results of a hydrographic survey conducted by the United States Army Corps of Engineers. The information is provided for informational purposes only and is not intended to be used for any other purpose. The user is responsible for the accuracy, completeness, reliability, usability or suitability for any particular purpose of the recipient.

Submitted:	Surveyed By:	Plotted By:	Checked By:
	SJR,jdh	BTD	TAF
Recommender:	Chief, Survey Section		
Approver:	Chief, Waterways Maintenance Section		

**CALCASIEU SHIP CHANNEL**  
**BAR SHEET 36**  
**CR\_36\_BAR\_20150401**  
**01 April 2015**

**Sheet Reference Number**  
**36 of 53**



**LEGEND**

--- Federal Navigation Channel	○ Cable Area	□ Borrow Area	■ -15' and above
— Federal Navigation Center Line	□ Placement Area	● Shoalest Sounding**	■ -15' to -20'
— As-built Pipeline/Cable	□ Anchorage Area	★ Beacon, General	■ -20' to -25'
..... Unconfirmed Pipeline/Cable	⊗ Obstruction Point	◆ Red Navigation Buoy	■ -25' to -32'
— Project Depth Contour	⚓ Wrecks-Submerged	◆ Green Navigation Buoy	■ -32' to -38'
			■ -38' to -40'
			■ -40' to -42'
			■ -42' and below

**Gage Reading:** CAMERON:2.0 MLG  
**Sea Conditions:** CALM  
**Vessel Name:** MV TECHE  
**Survey Type:** CONDITION  
**Sounding Frequency\*\*\*:** LOW

Feet  
0 400 800 1,200 1,600

**NOTES:**

Horizontal Coordinate System: North American Datum of 1983 (NAD83), projected to the State Plane Coordinate System (SPCS), Louisiana South Zone. Distance units in U.S. Survey Feet.

Vertical Datum: Soundings are shown in feet and indicate depths below Mean Low Gulf Datum (MLG). Datum Relationships for gage 73650 as of December 2013: 0.0' NAVD83 (2009.55) = 1.3' MLLW = 2.3' MLG or 0.0' MLLW = 1.0' MLG

Distances on the Calcasieu River are shown at 1 mile intervals.

The location of navigation aids are based on and provided by the U.S. Coast Guard and USACE survey crews.

2010 Aerial Photography data source: NAIP

Reference is N.O.A.A. Navigation Chart No. 11339.

\*\* Shoalest Sounding per Quarter per Reach.

\*\*\* High frequency (200 kHz) survey data represents the first signal return at a sounding location and will include suspended solids, known as "fluff", if present. Low frequency (20 kHz) survey data normally penetrates through this "fluff" layer to depict elevations of consolidated bottom material. Low frequency accuracies may vary depending on channel conditions and fathometer settings.