

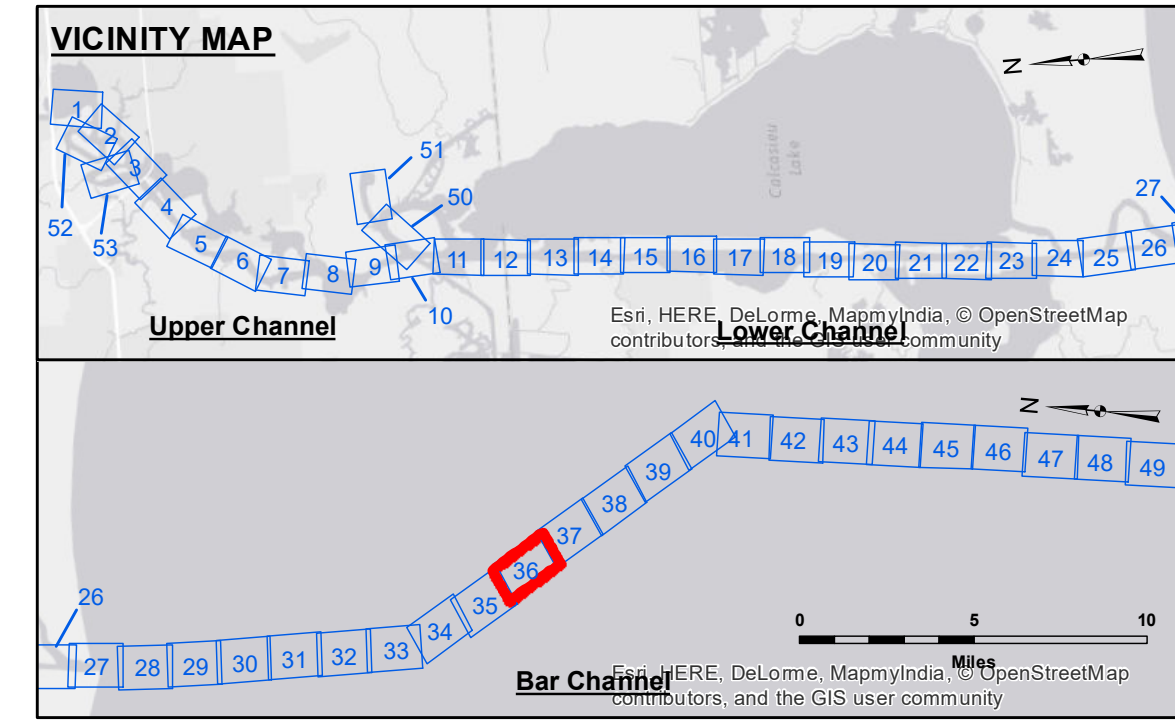
CAMERON PARISH GULF OF MEXICO

SITE NO. 2 DISPOSAL AREA

Calcasieu
Channel Lighted
Buoy 20

Calcasieu
Channel Lighted
Buoy 19

322° 36' 30" (Grid)



LEGEND			
	Federal Navigation Channel		Placement Area
	Federal Navigation Center Line		Obstruction Point
	As-built Pipeline/Cable		Wrecks-Submerged
	Unconfirmed Pipeline/Cable		
	Project Depth Contour		
	Cable Area		Beacon, General
	Placement Area		Red Navigation Buoy
	Obstruction Point		Green Navigation Buoy
	Beacon, General		
	Red Navigation Buoy		
	Green Navigation Buoy		
	Fluff Thickness (feet)*		
	Shoalest Sounding**		

Gage Reading: CAMERON: 3.42 MLG
 Sea Conditions: 2-3'
 Vessel Name: M/V TECHE
 Survey Type: CONDITION
 Sounding Frequency***: LOW

NOTES:
 Horizontal Coordinate System: North American Datum of 1983 (NAD83), projected to the State Plane Coordinate System (SPCS), Louisiana South Zone. Distance units in U.S. Survey Feet.
 Vertical Datum: Soundings are shown in feet and indicate depths below Mean Low Gulf Datum (MLG). Datum Relationship for gage 73650 as of December 2013: 0.0' NAVD83 (2009.55) = 1.3' MLLW = 2.3' MLG or 0.0' MLLW = 1.0' MLG
 Distances on the Calcasieu River are shown at 1 mile intervals.
 The location of navigation aids are based on and provided by the U.S. Coast Guard and USACE survey crews.
 2015 Aerial Photography data source: NAIP
 Reference is N.O.A.A. Navigation Chart No. 11339.
 * Difference between high and low frequency elevations where greater than 1.0'.
 ** Shoalest Sounding per Quarter per Reach.
 *** High frequency (200 kHz) survey data represents the first signal return at a sounding location and will include suspended solids, known as "fluff", if present. Low frequency (20 kHz) survey data normally penetrates through this "fluff" layer to depict elevations of consolidated bottom material. Low frequency accuracies may vary depending on channel conditions and fathometer settings.



DISCLAIMER:
 Access: The United States Government furnishes these data and the recipient accepts and uses them with the express understanding that the data are not warranted for accuracy, reliability, usability, or suitability for any particular purpose of the recipient. The user is responsible for the results of any application of the data for other than its intended purpose. The user shall indemnify and hold the United States Government harmless from any liability whatsoever in any event by reason of any use of the data. These data are being provided to the recipient under a license that grants the recipient the right to use the data for the purposes stated in the license agreement. The recipient may not transfer these data to others without also transferring the license. The information depicted on this map represents the results of a survey conducted on or about the date shown. It is considered to represent the general condition existing at that time.

U.S. ARMY CORPS OF ENGINEERS NEW ORLEANS DISTRICT		
Submitted:	Surveyed By: SR, JH	Checked By: AC
Recommended:	Plotted By: BD	
Approved:	Chief, Survey Section	Chief, Waterways Maintenance Section

**CALCASIEU SHIP CHANNEL
 BAR SHEET 36
 CR_36_BAR_20171018_CS
 18 October 2017**

**Sheet Reference Number
 36 of 53**