

US Army Corps of Engineers District: CEMV

DISCLAIMER: The United States Government furnishes these data and the recipient accepts and uses them with the express understanding that the data are not warranted for any purpose other than that for which they were collected. The user is responsible for the results of any use of the data for any purpose other than that for which they were collected. The user is responsible for the results of any use of the data for any purpose other than that for which they were collected. The user is responsible for the results of any use of the data for any purpose other than that for which they were collected.

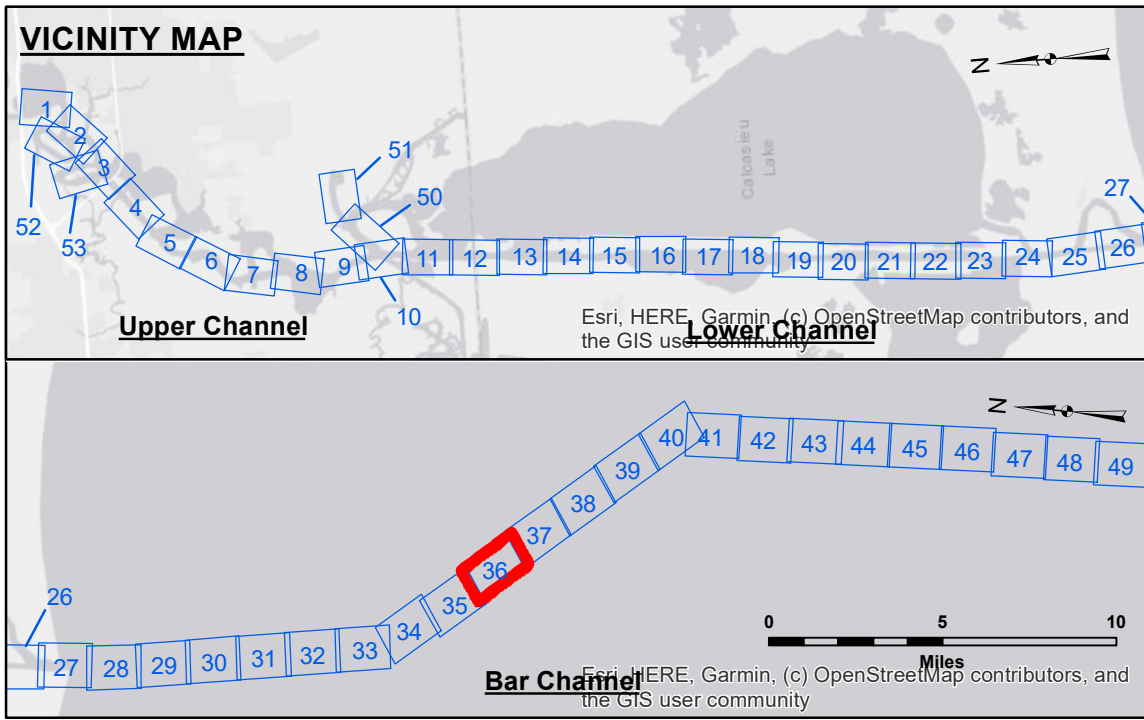
| | |
|--------------|--------------------|
| Submitted: | Surveyed By: SP-JS |
| Recommended: | Plotted By: BD |
| Approved: | Checked By: AD/JH |

U.S. ARMY CORPS OF ENGINEERS
NEW ORLEANS DISTRICT

CALCASIEU SHIP CHANNEL
BAR SHEET 36
CR_36_BAR_20250116_CS
16 January 2025

Sheet Reference Number
36 of 53

Revision Number: 4.2-20240420



LEGEND

| | | | |
|----------------------------------|---------------------|---------------------------|------------------|
| --- Federal Navigation Channel | ○ Cable Area | 3 Fluff Thickness (feet)* | ■ -16' and above |
| — Federal Navigation Center Line | □ Placement Area | ● Shoalest Sounding** | ■ -16' to -21' |
| — As-built Pipeline/Cable | ⊗ Anchorage Area | ★ Beacon, General | ■ -21' to -26' |
| Unconfirmed Pipeline/Cable | ⊗ Obstruction Point | ◆ Red Navigation Buoy | ■ -26' to -33' |
| — Project Depth Contour | ⊗ Wrecks-Submerged | ◆ Green Navigation Buoy | ■ -33' to -39' |
| | | | ■ -39' to -41' |
| | | | ■ -41' to -43' |
| | | | ■ -43' and below |

NOTES:

Horizontal Coordinate System: North American Datum of 1983 (NAD83), projected to the State Plane Coordinate System (SPCS), Louisiana South Zone. Distance units in U.S. Survey Feet.

Vertical Datum: CAMERON VRN: 0.13 MLLW

Sounding Frequency***: LOW

Sea Conditions: CHOPPY

Vessel Name: MV TECHE

Condition: CONDITION

Scale: 0 400 800 1,200 1,600 Feet

NOTES:

Horizontal Coordinate System: North American Datum of 1983 (NAD83), projected to the State Plane Coordinate System (SPCS), Louisiana South Zone. Distance units in U.S. Survey Feet.

Vertical Datum: CAMERON VRN: 0.13 MLLW

Sounding Frequency***: LOW

Sea Conditions: CHOPPY

Vessel Name: MV TECHE

Condition: CONDITION

Scale: 0 400 800 1,200 1,600 Feet

Distances on the Calcasieu River are shown at 1 mile intervals.

The location of navigation aids are based on and provided by the U.S. Coast Guard and USACE survey crews.

2015 Aerial Photography data source: NAIP

Reference is N.O.A.A. Navigation Chart No. 11339.

* Difference between high and low frequency elevations where greater than 1.0'.

** Shoalest Sounding per Quarter per Reach.

*** High frequency (200 kHz) survey data represents the first signal return at a sounding location and will include suspended solids, known as "fluff", if present. Low frequency (20 kHz) survey data normally penetrates through this "fluff" layer to depict elevations of consolidated bottom material. Low frequency accuracies may vary depending on channel conditions and fathometer settings.