

DISCLAIMER

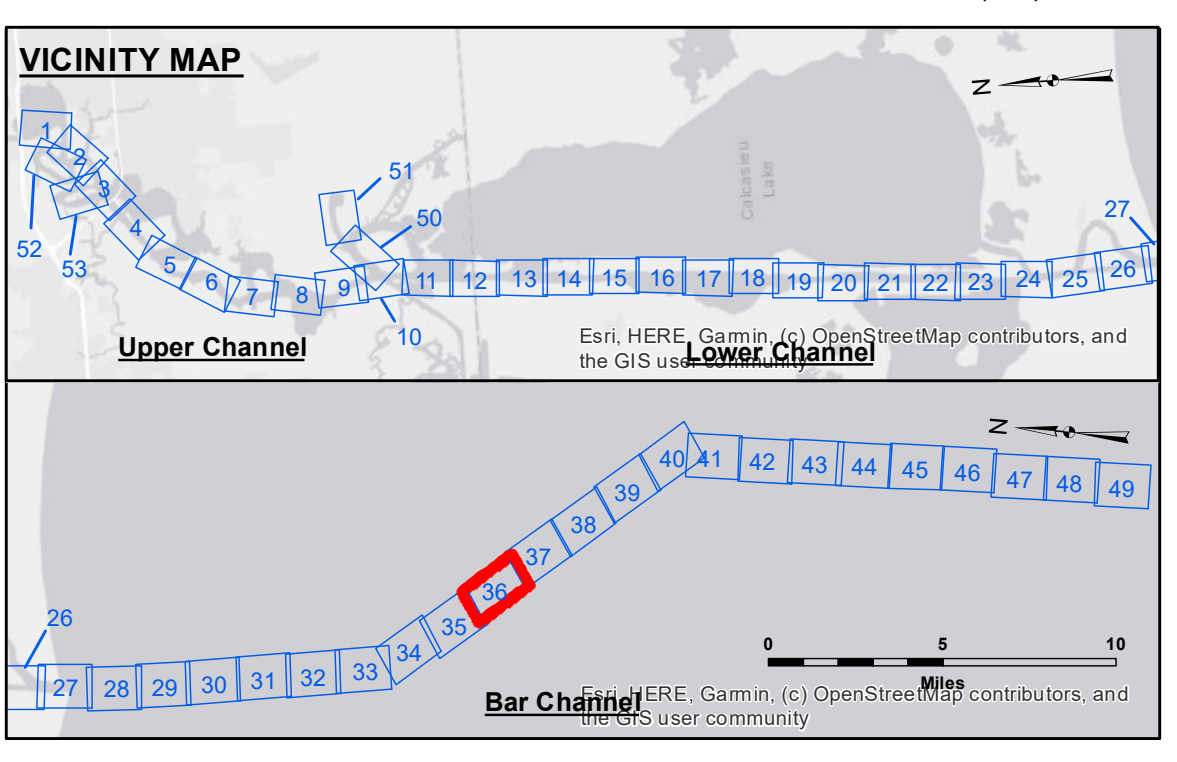
The United States Government furnishes these data and the recipient accepts and uses them with the express understanding that the data are not to be used for any purpose other than that for which they were prepared, or in any way that may constitute a warranty, express or implied, of accuracy, completeness, or reliability for any particular purpose of the recipient. The user is responsible for the results of any application of the data for other than intended purposes. These data are being provided to the recipient under no liability whatsoever to any person by reason of any use of these data. The recipient may not transfer these data to others without also transferring the Disclaimer. The information depicted on this map represents the results of a hydrographic survey which was conducted in accordance with the standards of the Hydrographic Surveying Manual, U.S. Army Corps of Engineers, and is not intended for use in any other manner. The recipient is responsible for the results of any use of these data for purposes other than those intended.

Submitted:	Surveyed By: SP-JS
Recommended:	Plotted By: JH
Checked:	Chief, Survey Section
Approved:	Chief, Waterways Maintenance Section

CALCASIEU SHIP CHANNEL
BAR SHEET 36
CR_36_BAR_20250210_PR
10 February 2025

Sheet Reference Number
36 of 53

Revision Number:
4.2-202/04/20



LEGEND

--- Federal Navigation Channel	○ Cable Area	3 Fluff Thickness (feet)*	-16' and above
— Federal Navigation Center Line	□ Placement Area	● Shoalest Sounding**	-16' to -21'
— As-built Pipeline/Cable	⊗ Anchorage Area	★ Beacon, General	-21' to -26'
..... Unconfirmed Pipeline/Cable	⊗ Obstruction Point	◆ Red Navigation Buoy	-26' to -33'
— Project Depth Contour	⊗ Wrecks-Submerged	◆ Green Navigation Buoy	-33' to -39'
			-39' to -41'
			-41' to -43'
			-43' and below

NOTES:

Horizontal Coordinate System: North American Datum of 1983 (NAD83), projected to the State Plane Coordinate System (SPCS), Louisiana South Zone. Distance units in U.S. Survey Feet.

Vertical Datum: Soundings are shown in feet and indicate depths below Mean Lower Low Water Datum (MLLW). Datum Relationships for gage 73650 as of December 2013: 0.0' NAVD88 (2009.55) = 1.3' MLLW = 2.3' MLG or 0.0' MLLW = 1.0' MLG

Distances on the Calcasieu River are shown at 1 mile intervals.

The location of navigation aids are based on and provided by the U.S. Coast Guard and USACE survey crews.

2015 Aerial Photography data source: NAIP

Reference is N.O.A.A. Navigation Chart No. 11339.

* Difference between high and low frequency elevations where greater than 1.0'.
** Shoalest Sounding per Quarter per Reach.

*** High frequency (200 kHz) survey data represents the first signal return at a sounding location and will include suspended solids, known as "fluff", if present. Low frequency (20 kHz) survey data normally penetrates through this "fluff" layer to depict elevations of consolidated bottom material. Low frequency accuracies may vary depending on channel conditions and fathometer settings.

Gage Reading: CAMERON VRN: 0.22 MLLW AVG
Sea Conditions: CHOPPY
Vessel Name: MV TECHE
Survey Type: PROGRESS
Sounding Frequency***: LOW

Scale: 0 to 1,600 Feet