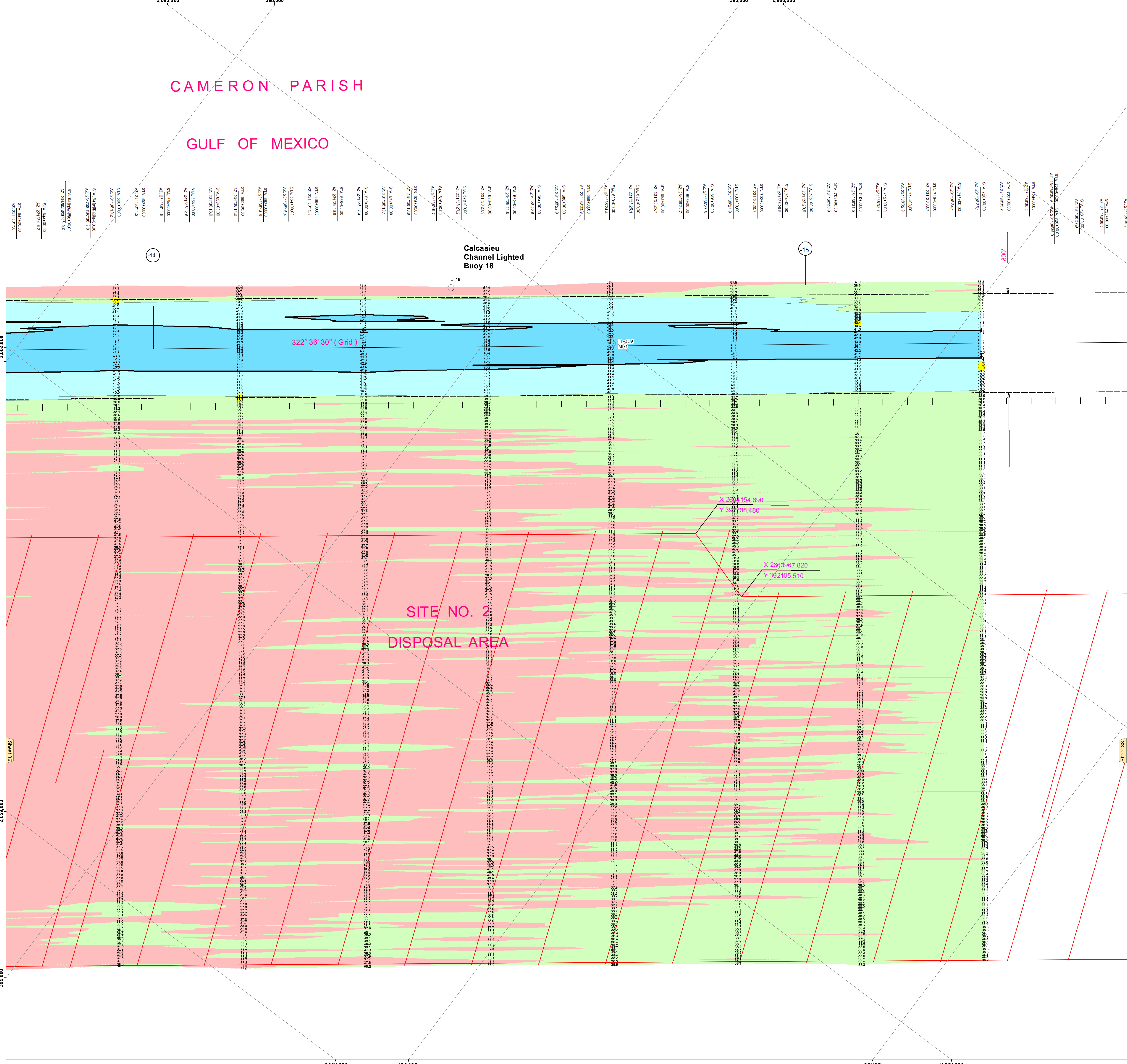


2,665,000 398,000 395,000 2,668,000

CAMERON PARISH

GULF OF MEXICO



**DISCLAIMER**  
 The United States Government furnishes this data for the use of the user. It is not to be construed as a warranty, express or implied, of the accuracy, reliability, or completeness of the information contained herein. The user is responsible for the results of any use of this information. The user is also responsible for the results of any use of this information in any other manner. The user is also responsible for the results of any use of this information in any other manner. The user is also responsible for the results of any use of this information in any other manner.

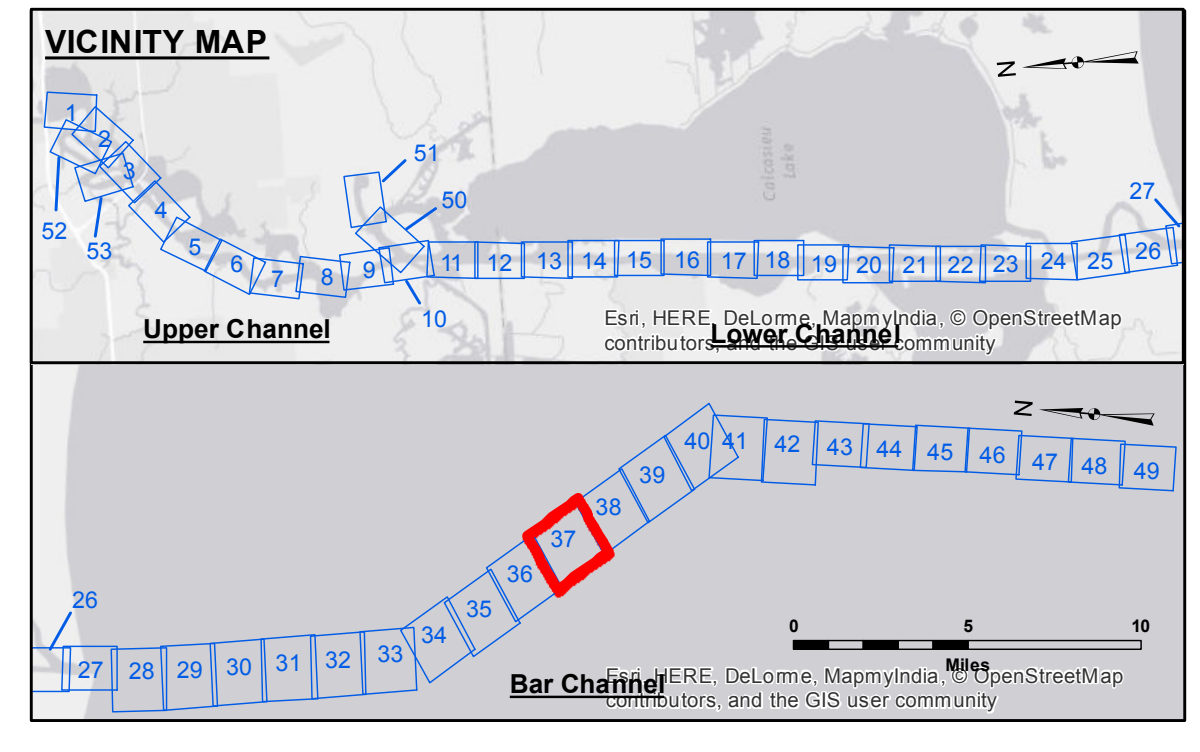
Submitted:	SURVEYED BY:
Recommended:	PROJECT BY:
Approved:	CHECKED BY:

U.S. ARMY CORPS OF ENGINEERS  
NEW ORLEANS DISTRICT

**CALCASIEU SHIP CHANNEL**  
**BAR SHEET 37**  
**CR\_37\_BARX\_20160921**  
**21 September 2016**

**Sheet Reference Number**  
**37 of 53**

Revision Number:  
15-9-2016000



**LEGEND**

--- Federal Navigation Channel	● Cable Area	3 Fluff Thickness (feet)*	■ -15' and above
— Federal Navigation Center Line	□ Placement Area	● Shoalest Sounding**	■ -15' to -20'
— As-built Pipeline/Cable	□ Anchorage Area	★ Beacon, General	■ -20' to -25'
--- Unconfirmed Pipeline/Cable	□ Obstruction Point	★ Red Navigation Buoy	■ -25' to -32'
— Project Depth Contour	✶ Wrecks-Submerged	★ Green Navigation Buoy	■ -32' to -38'
			■ -38' to -40'
			■ -40' to -42'
			■ -42' and below

Compass rose and scale bar (0 to 1,600 feet).

Gage Reading: CAMERON: 2.5 MLG AVG  
 Sea Conditions: 1-3' SEAS  
 Vessel Name: M/V TECHE  
 Survey Type: CONDITION  
 Sounding Frequency\*\*\*: LOW

**Horizontal Coordinate System:**  
 North American Datum of 1983 (NAD83), projected to the State Plane Coordinate System (SPCS), Louisiana South Zone. Distance units in U.S. Survey Feet.

**Vertical Datum:**  
 Soundings are shown in feet and indicate depths below Mean Low Gulf Datum (MLG). Datum Relationships for page 73650 as of December 2013:  
 0.0' NAVD83 (2009.55) = 1.3' MLLW = 2.3' MLG or 0.0' MLLW = 1.0' MLG

Distances on the Calcasieu River are shown at 1 mile intervals.

The location of navigation aids are based on and provided by the U.S. Coast Guard and USACE survey crews.

2015 Aerial Photography data source: NAIP

Reference is N.O.A. Navigation Chart No. 11339.

\* Difference between high and low frequency elevations where greater than 1.0'.  
 \*\* Shoalest Sounding per Quarter per Reach.  
 \*\*\* High frequency (200 kHz) survey data represents the first signal return at a sounding location and will include suspended solids, known as "fluff", if present. Low frequency (20 kHz) survey data normally penetrates through this "fluff" layer to depict elevations of consolidated bottom material. Low frequency accuracies may vary depending on channel conditions and fathometer settings.