

Disclaimer: The United States Government neither warrants nor makes any representation as to the accuracy, reliability, or completeness of the information contained herein. The user is responsible for the use of the information and for the results of any action taken thereon. The user is also responsible for the safety of any personnel or property involved in the use of the information. The user is also responsible for the safety of any personnel or property involved in the use of the information. The user is also responsible for the safety of any personnel or property involved in the use of the information.

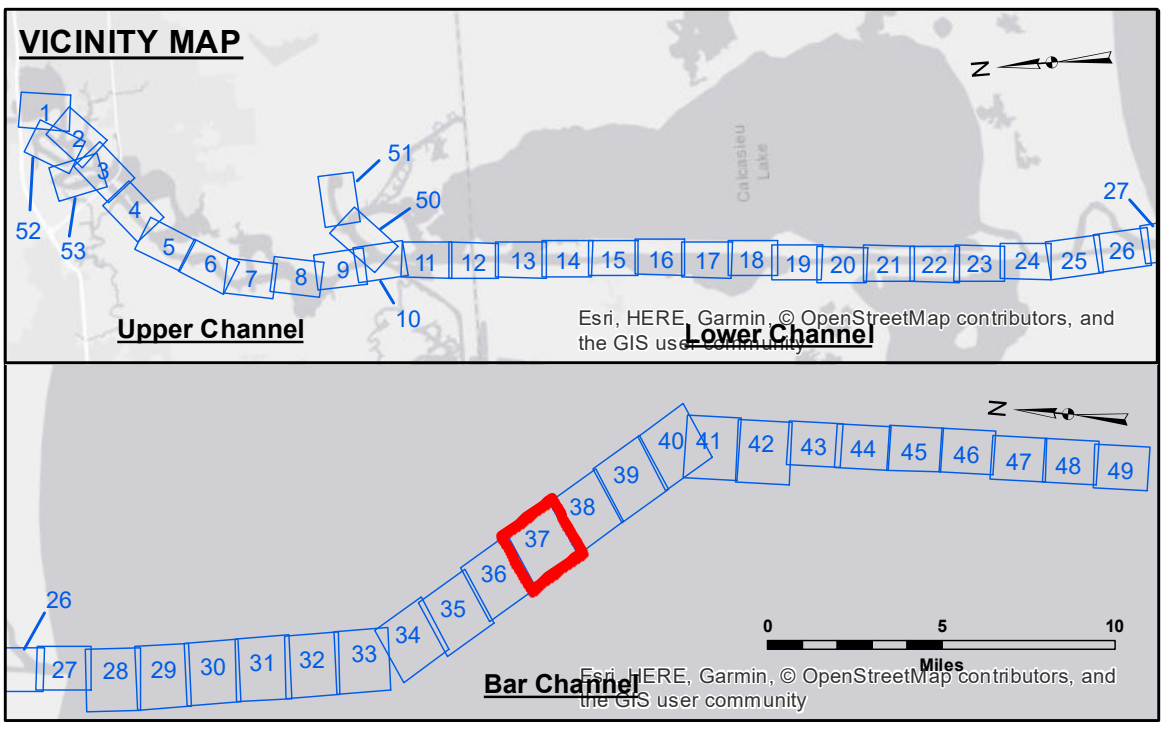
Submitted:	SR, JH
Recommended:	BD
Checked By:	AO
Chief, Survey Section	
Chief, Waterway Maintenance Section	

U.S. ARMY CORPS OF ENGINEERS
NEW ORLEANS DISTRICT

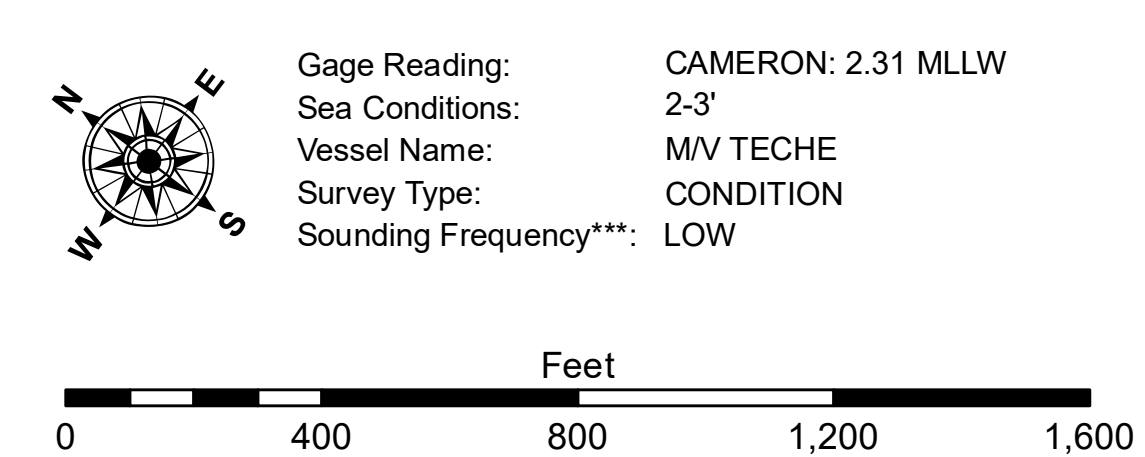
**CALCASIEU SHIP CHANNEL
BAR SHEET 37
CR_37_BARX_20171114_CS
14 November 2017**

Sheet Reference Number
37 of 53

Revision Number:
3.12.2016011



LEGEND	
--- Federal Navigation Channel	••• Cable Area
— Federal Navigation Center Line	□ Placement Area
— As-built Pipeline/Cable	□ Anchorage Area
--- Unconfirmed Pipeline/Cable	□ Obstruction Point
— Project Depth Contour	✈ Wrecks-Submerged
3 Fluff Thickness (feet)*	★ Beacon, General
● Shoalest Sounding**	★ Red Navigation Buoy
★ Beacon, General	◆ Green Navigation Buoy



NO 652,000

Horizontal Coordinate System:
North American Datum of 1983 (NAD83), projected to the State Plane Coordinate System (SPCS), Louisiana South Zone. Distance units in U.S. Survey Feet.

Vertical Datum:
Soundings are shown in feet and indicate depths below Mean Lower Low Water Datum (MLLW). Datum Relationships for page 73650 as of December 2013:
0.0' NAVD88 (2009.55) = 1.3' MLLW = 2.3' MLG or 0.0' MLLW = 1.0' MLG

Distances on the Calcasieu River are shown at 1 mile intervals.

The location of navigation aids are based on and provided by the U.S. Coast Guard and USACE survey crews.

2015 Aerial Photography data source: NAIP

Reference is N.O.A. Navigation Chart No. 11339.

* Difference between high and low frequency elevations where greater than 1.0'.
** Shoalest Sounding per Quarter per Reach.

*** High frequency (200 kHz) survey data represents the first signal return at a sounding location and will include suspended solids, known as "fluff", if present. Low frequency (20 kHz) survey data normally penetrates through this "fluff" layer to depict elevations of consolidated bottom material. Low frequency accuracies may vary depending on channel conditions and fathometer settings.