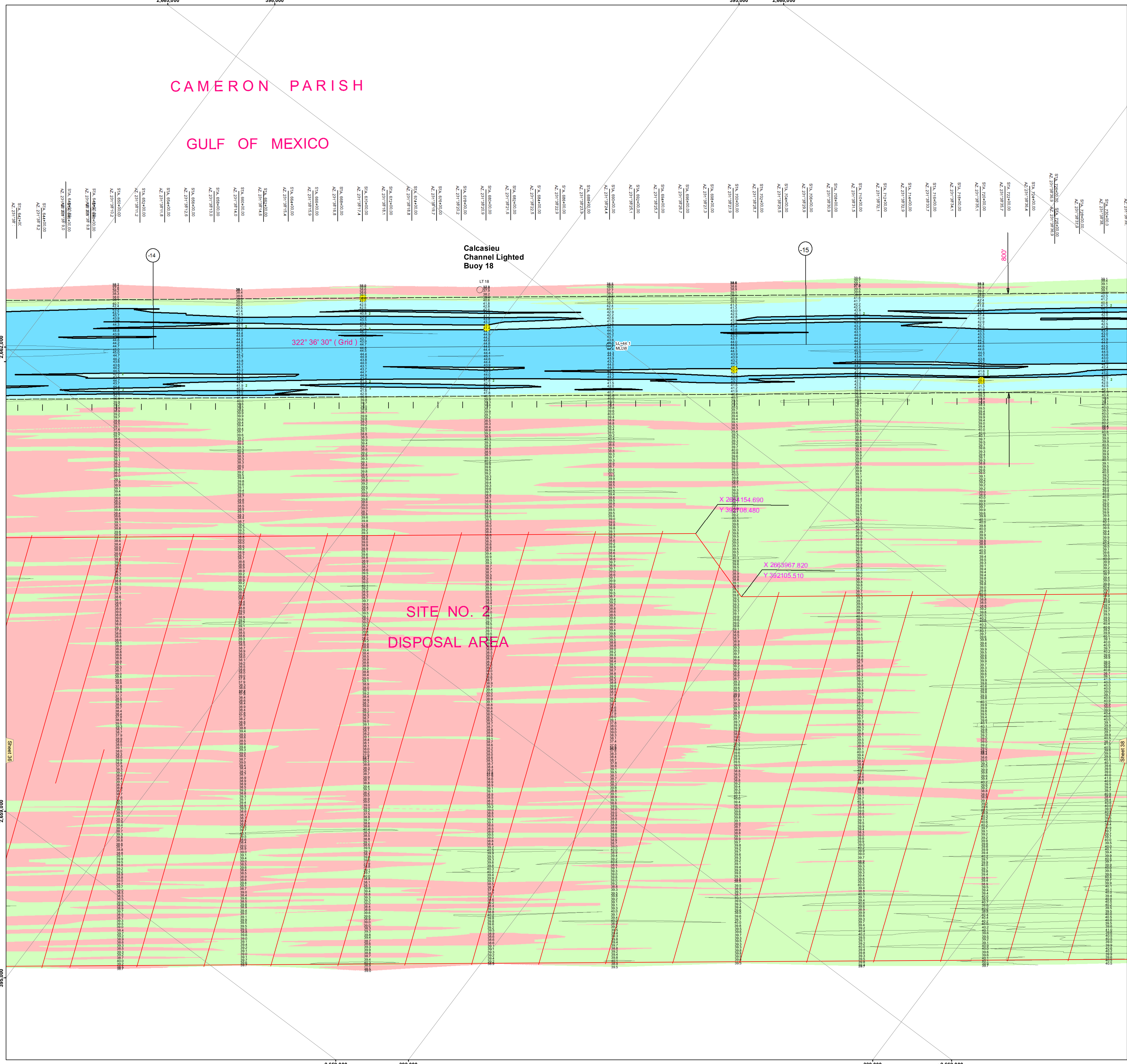


2,665,000 398,000 395,000 2,668,000

CAMERON PARISH

GULF OF MEXICO



Disclaimer: The United States Government makes no warranty or representation, either expressed or implied, with respect to the accuracy, reliability, or completeness of the information contained herein. The user assumes all liability for any use of the information contained herein. The user agrees to indemnify and hold the United States Government harmless from and against all claims, damages, and expenses, including reasonable attorneys' fees, that may be asserted against or incurred by the United States Government as a result of the use of the information contained herein. The user also agrees to hold the United States Government harmless from and against all claims, damages, and expenses, including reasonable attorneys' fees, that may be asserted against or incurred by the user as a result of the use of the information contained herein.

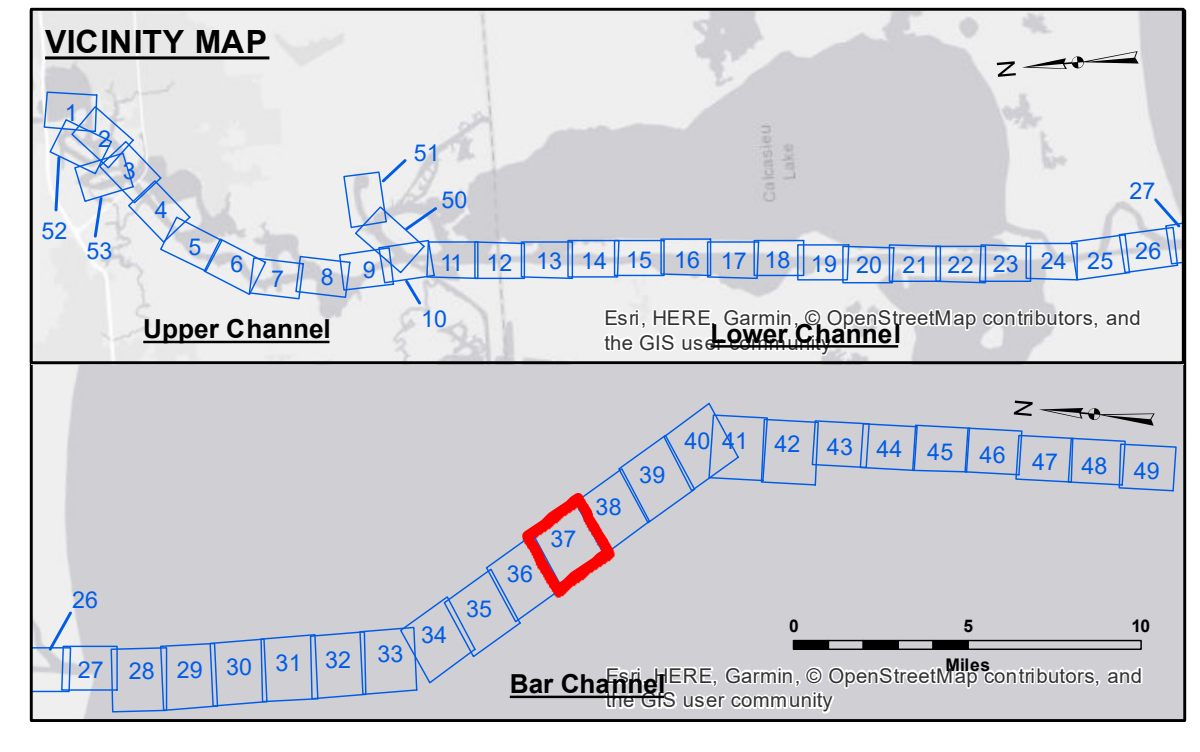
Submitted:	SFV, JH
Recommended:	BD
Checked:	AO
Approved:	AO

U.S. ARMY CORPS OF ENGINEERS
NEW ORLEANS DISTRICT

CALCASIEU SHIP CHANNEL
BAR SHEET 37
CR_37_BAFX_20180627_AD
27 June 2018

Sheet Reference Number
37 of 53

Revision Number:
3.1.2016011



LEGEND	
--- Federal Navigation Channel	● Cable Area
— Federal Navigation Center Line	■ Placement Area
— As-built Pipeline/Cable	□ Anchorage Area
--- Unconfirmed Pipeline/Cable	⊠ Obstruction Point
— Project Depth Contour	✈ Wrecks-Submerged
3 Fluff Thickness (feet)*	★ Beacon, General
● Shoalest Sounding**	★ Red Navigation Buoy
★ Beacon, General	★ Green Navigation Buoy
★ Red Navigation Buoy	
★ Green Navigation Buoy	

Gage Reading: CAMERON: 1.92 MLLW
Sea Conditions: 1'-2"
Vessel Name: M/V LAFOURCHE
Survey Type: CONDITION
Sounding Frequency***: LOW

Vertical Datum:
Soundings are shown in feet and indicate depths below Mean Lower Low Water Datum (MLLW).
Datum Relationships for page 73650 as of December 2013:
0.0' NAVD88 (2009.55) = 1.3' MLLW = 2.3' MLG or 0.0' MLLW = 1.0' MLG

Distances on the Calcasieu River are shown at 1 mile intervals.

The location of navigation aids are based on and provided by the U.S. Coast Guard and USACE survey crews.

2015 Aerial Photography data source: NAIP
Reference is N.O.A. Navigation Chart No. 11339.

* Difference between high and low frequency elevations where greater than 1.0'.
** Shoalest Sounding per Quarter per Reach.
*** High frequency (200 kHz) survey data represents the first signal return at a sounding location and will include suspended solids, known as "fluff", if present. Low frequency (20 kHz) survey data normally penetrates through this "fluff" layer to depict elevations of consolidated bottom material. Low frequency accuracies may vary depending on channel conditions and fathometer settings.

Horizontal Coordinate System:
North American Datum of 1983 (NAD83), projected to the State Plane Coordinate System (SPCS), Louisiana South Zone. Distance units in U.S. Survey Feet.

Vertical Datum:
Soundings are shown in feet and indicate depths below Mean Lower Low Water Datum (MLLW).
Datum Relationships for page 73650 as of December 2013:
0.0' NAVD88 (2009.55) = 1.3' MLLW = 2.3' MLG or 0.0' MLLW = 1.0' MLG

Distances on the Calcasieu River are shown at 1 mile intervals.

The location of navigation aids are based on and provided by the U.S. Coast Guard and USACE survey crews.

2015 Aerial Photography data source: NAIP
Reference is N.O.A. Navigation Chart No. 11339.

* Difference between high and low frequency elevations where greater than 1.0'.
** Shoalest Sounding per Quarter per Reach.
*** High frequency (200 kHz) survey data represents the first signal return at a sounding location and will include suspended solids, known as "fluff", if present. Low frequency (20 kHz) survey data normally penetrates through this "fluff" layer to depict elevations of consolidated bottom material. Low frequency accuracies may vary depending on channel conditions and fathometer settings.