



Division of District Operations
 District Engineer
 District Office
 1000 Poydras Street, Suite 1000
 New Orleans, LA 70112-2400
 Phone: (504) 586-1000
 Fax: (504) 586-1001
 Email: cemvnm@usace.army.mil

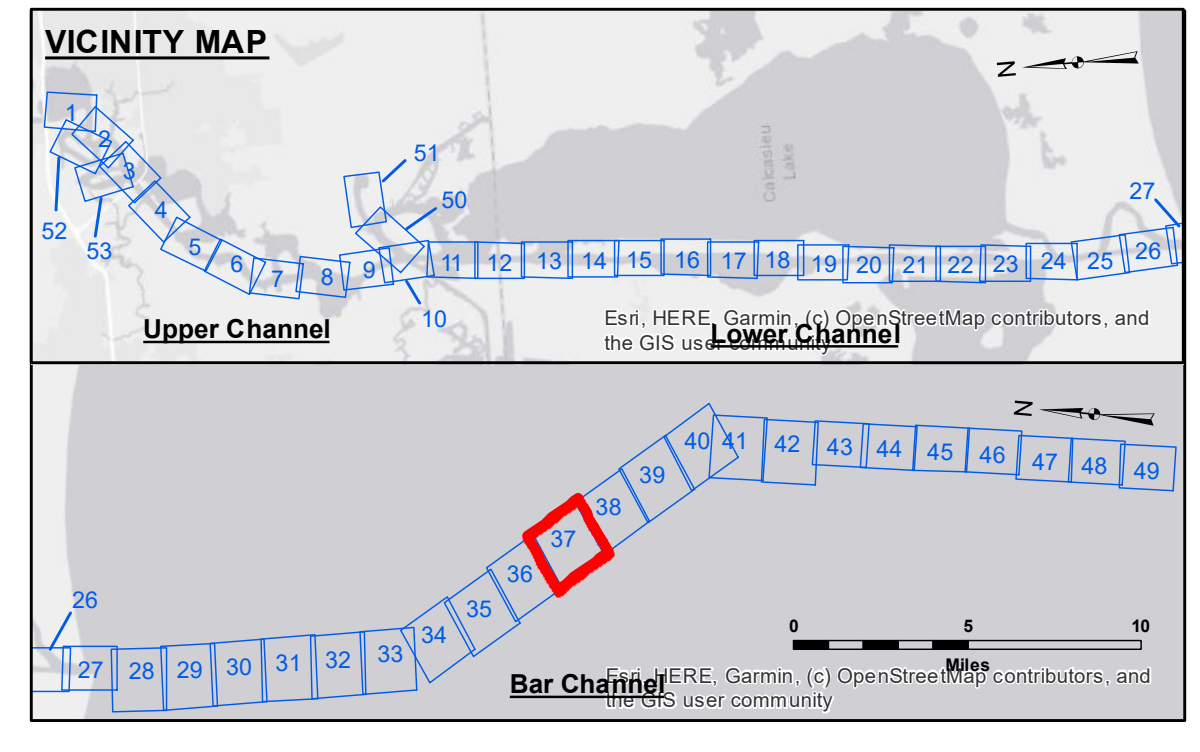
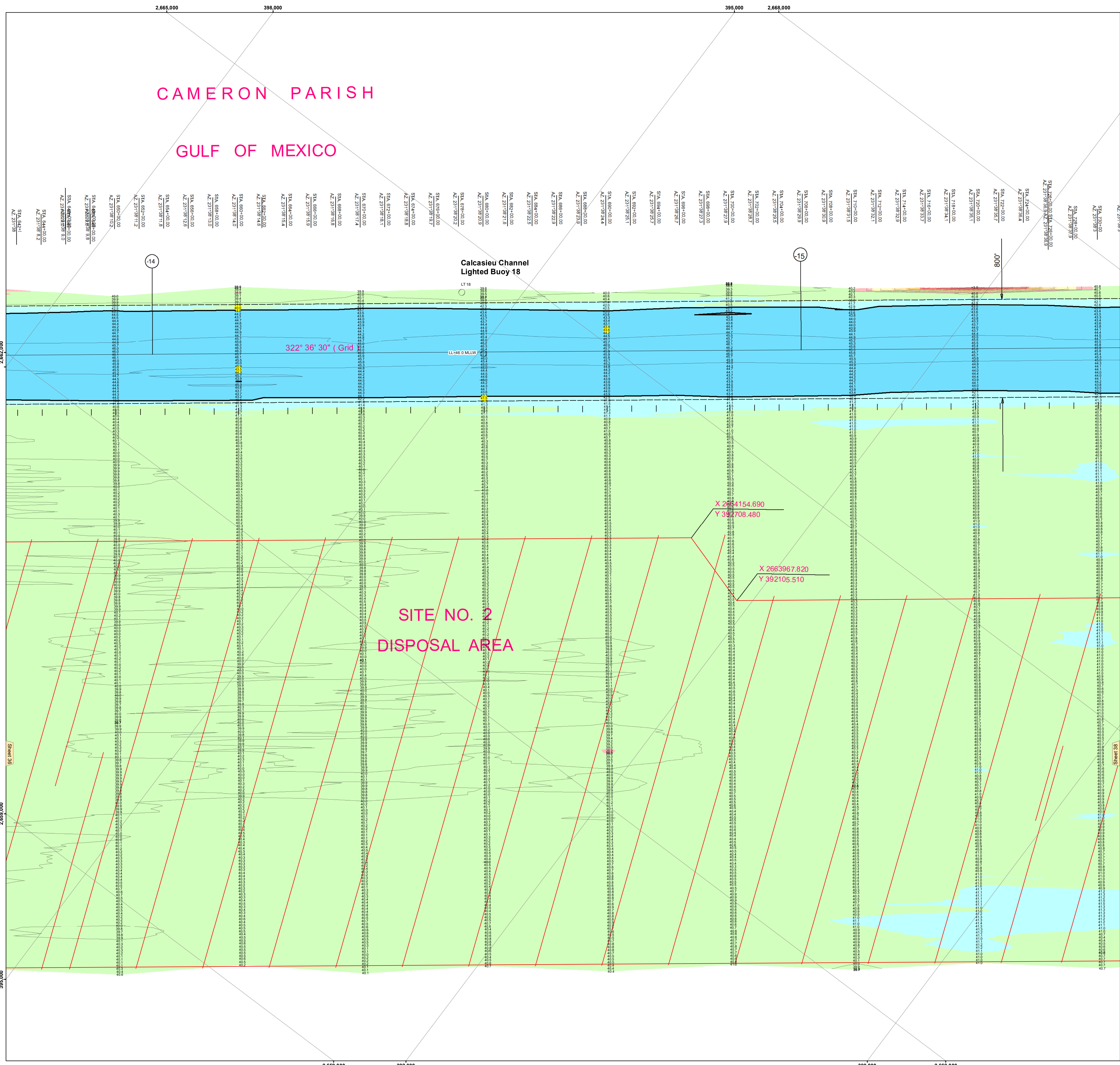
DISCLAIMER: The information contained on this map represents the results of a survey conducted by the U.S. Army Corps of Engineers, District of New Orleans, and is not to be used for any purpose other than that for which it was prepared. The user assumes all responsibility for the use of the information contained on this map. The U.S. Army Corps of Engineers does not warrant the accuracy or completeness of the information contained on this map. The U.S. Army Corps of Engineers is not responsible for any errors or omissions in this map. The user assumes all responsibility for the use of the information contained on this map.

| | |
|------------|-------------|
| Submitted: | Checked By: |
| Approved: | Approved: |

U.S. ARMY CORPS OF ENGINEERS
 NEW ORLEANS DISTRICT
**CALCASIEU SHIP CHANNEL
 BAR SHEET 37
 CR_37_BAFX_20190731_CS
 31 July 2019**

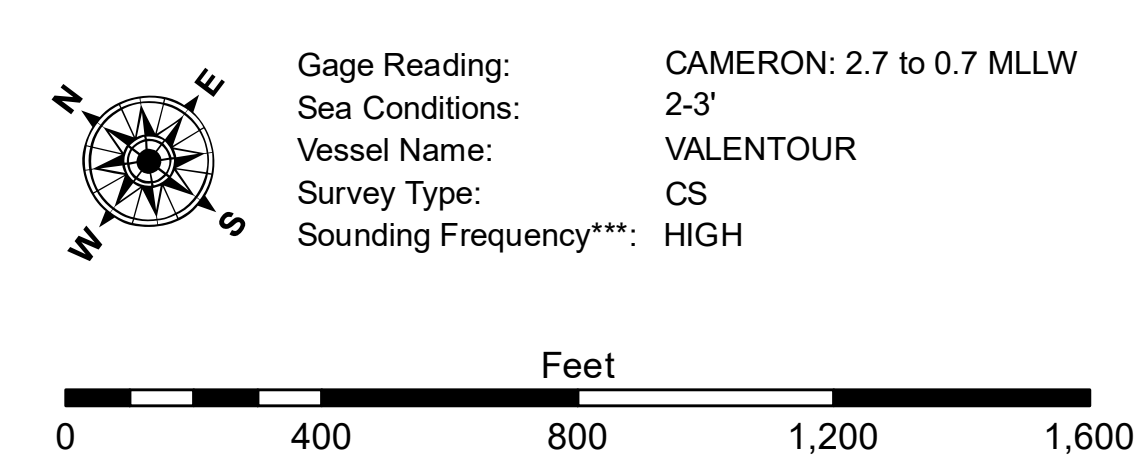
Sheet Reference Number
37 of 53

Revision Number:
 42-30187002



LEGEND

| | | | |
|----------------------------------|---------------------|---------------------------|------------------|
| --- Federal Navigation Channel | ○ Cable Area | 3 Fluff Thickness (feet)* | ■ -16' and above |
| — Federal Navigation Center Line | □ Placement Area | ● Shoalest Sounding** | ■ -16' to -21' |
| — As-built Pipeline/Cable | □ Anchorage Area | ★ Beacon, General | ■ -21' to -26' |
| --- Unconfirmed Pipeline/Cable | □ Obstruction Point | ★ Red Navigation Buoy | ■ -26' to -33' |
| — Project Depth Contour | ▲ Wrecks-Submerged | ★ Green Navigation Buoy | ■ -33' to -39' |
| | | | ■ -39' to -41' |
| | | | ■ -41' to -43' |
| | | | ■ -43' and below |



Horizontal Coordinate System:
 North American Datum of 1983 (NAD83), projected to the State Plane Coordinate System (SPCS), Louisiana South Zone. Distance units in U.S. Survey Feet.

Vertical Datum:
 Soundings are shown in feet and indicate depths below Mean Lower Low Water Datum (MLLW). Datum Relationships for page 73650 as of December 2013:
 0.0' NAVD88 (2009.55) = 1.3' MLLW = 2.3' MLG or 0.0' MLLW = 1.0' MLG

Distances on the Calcasieu River are shown at 1 mile intervals.

The location of navigation aids are based on and provided by the U.S. Coast Guard and USACE survey crews.

2015 Aerial Photography data source: NAIP

Reference is N.O.A. Navigation Chart No. 11339.

* Difference between high and low frequency elevations where greater than 1.0'.
 ** Shoalest Sounding per Quarter per Reach.
 *** High frequency (200 kHz) survey data represents the first signal return at a sounding location and will include suspended solids, known as "fluff", if present. Low frequency (20 kHz) survey data normally penetrates through this "fluff" layer to depict elevations of consolidated bottom material. Low frequency accuracies may vary depending on channel conditions and fathometer settings.