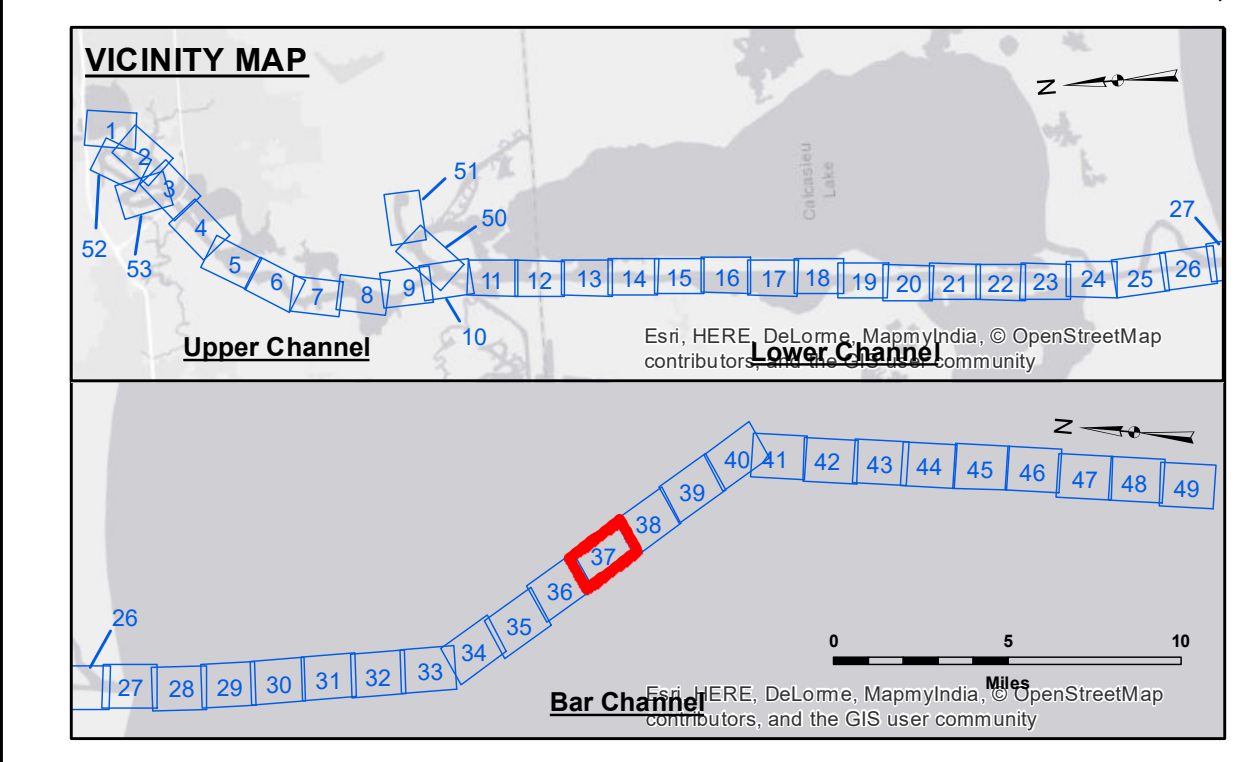
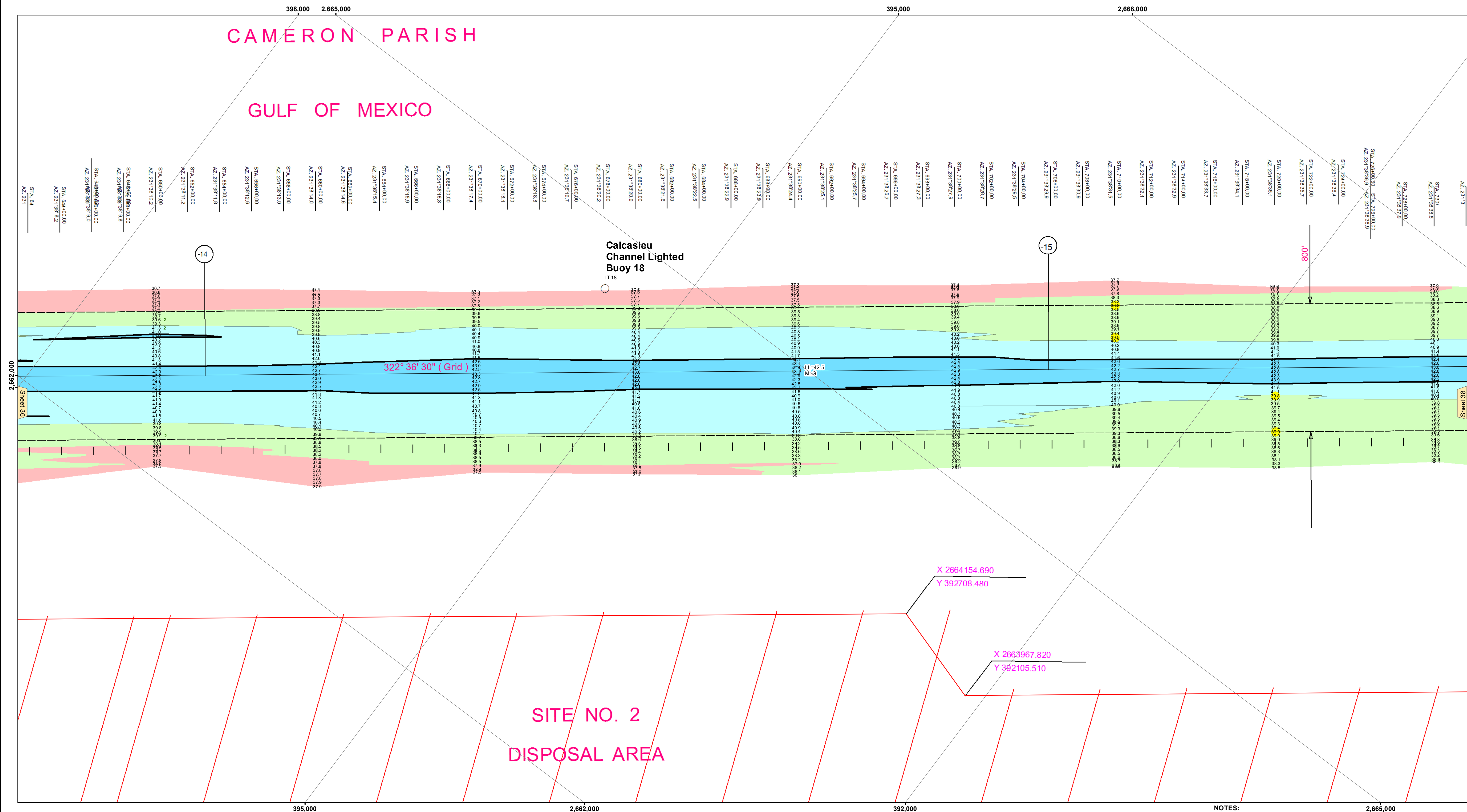


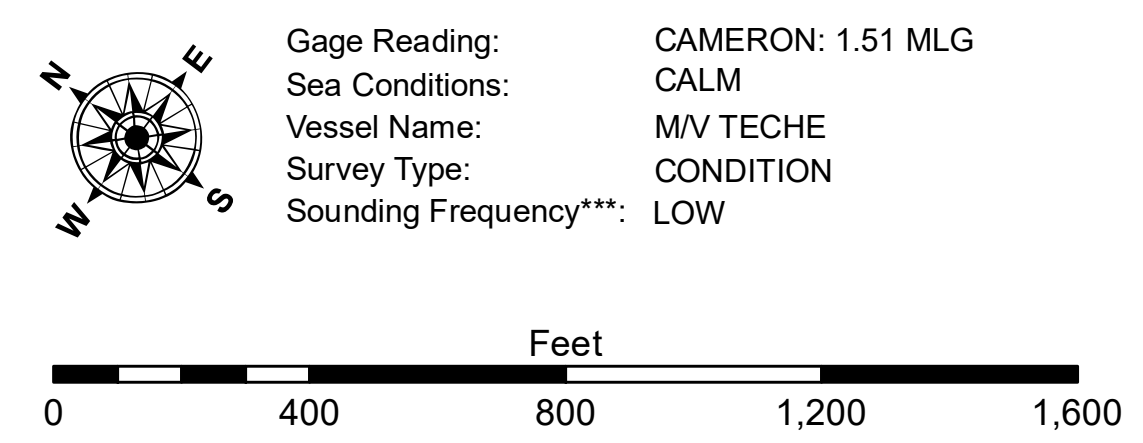
CAMERON PARISH

GULF OF MEXICO



LEGEND

--- Federal Navigation Channel	○ Cable Area	3 Fluff Thickness (feet)*	■ -15' and above
— Federal Navigation Center Line	□ Placement Area	● Shoalest Sounding**	■ -15' to -20'
— As-built Pipeline/Cable	⊗ Anchorage Area	★ Beacon, General	■ -20' to -25'
..... Unconfirmed Pipeline/Cable	⊗ Obstruction Point	◆ Red Navigation Buoy	■ -25' to -32'
— Project Depth Contour	⊗ Wrecks-Submerged	◆ Green Navigation Buoy	■ -32' to -38'
			■ -38' to -40'
			■ -40' to -42'
			■ -42' and below



NOTES:
 Horizontal Coordinate System:
 North American Datum of 1983 (NAD83), projected to the State Plane Coordinate System (SPCS), Louisiana South Zone. Distance units in U.S. Survey Feet.

Vertical Datum:
 Soundings are shown in feet and indicate depths below Mean Low Gulf Datum (MLG).
 Datum Relationships for gage 73650 as of December 2013:
 0.0' NAVD83 (2009.55) = 1.3' MLLW = 2.3' MLG or 0.0' MLLW = 1.0' MLG

Distances on the Calcasieu River are shown at 1 mile intervals.

The location of navigation aids are based on and provided by the U.S. Coast Guard and USACE survey crews.

2015 Aerial Photography data source: NAIP
 Reference is N.O.A.A. Navigation Chart No. 11339.

* Difference between high and low frequency elevations where greater than 1.0'.
 ** Shoalest Sounding per Quarter per Reach.
 *** High frequency (200 kHz) survey data represents the first signal return at a sounding location and will include suspended solids, known as "fluff", if present. Low frequency (20 kHz) survey data normally penetrates through this "fluff" layer to depict elevations of consolidated bottom material. Low frequency accuracies may vary depending on channel conditions and fathometer settings.



DISCLAIMER:
 The information depicted on this map represents the results of a survey conducted by the United States Army Corps of Engineers. The data is provided for informational purposes only and is not intended to be used for any other purpose. The user is responsible for the accuracy, completeness, and reliability of the information. The user is advised to consult the appropriate technical specifications and standards for the intended use of the information. The user is also advised to consult the appropriate regulatory agencies for any applicable laws, regulations, and standards. The user is further advised to consult the appropriate technical specifications and standards for the intended use of the information. The user is also advised to consult the appropriate regulatory agencies for any applicable laws, regulations, and standards. The user is further advised to consult the appropriate technical specifications and standards for the intended use of the information. The user is also advised to consult the appropriate regulatory agencies for any applicable laws, regulations, and standards.

Submitted:	SR: JH
Reviewed:	BD
Checked:	AC

U.S. ARMY CORPS OF ENGINEERS
 NEW ORLEANS DISTRICT

CALCASIEU SHIP CHANNEL
BAR SHEET 37
CR_37_BAR_20180123_CS
23 January 2018

Sheet Reference Number
37 of 53

Revision Number:
 1.13-20160811