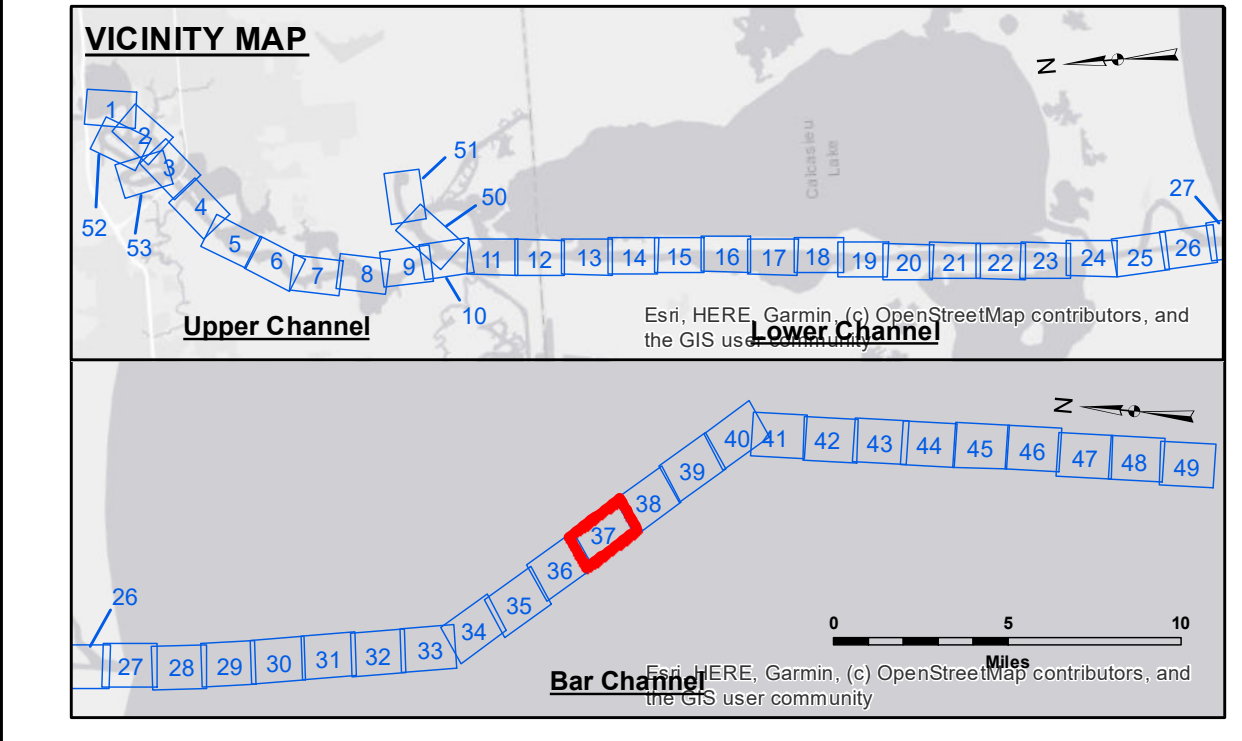
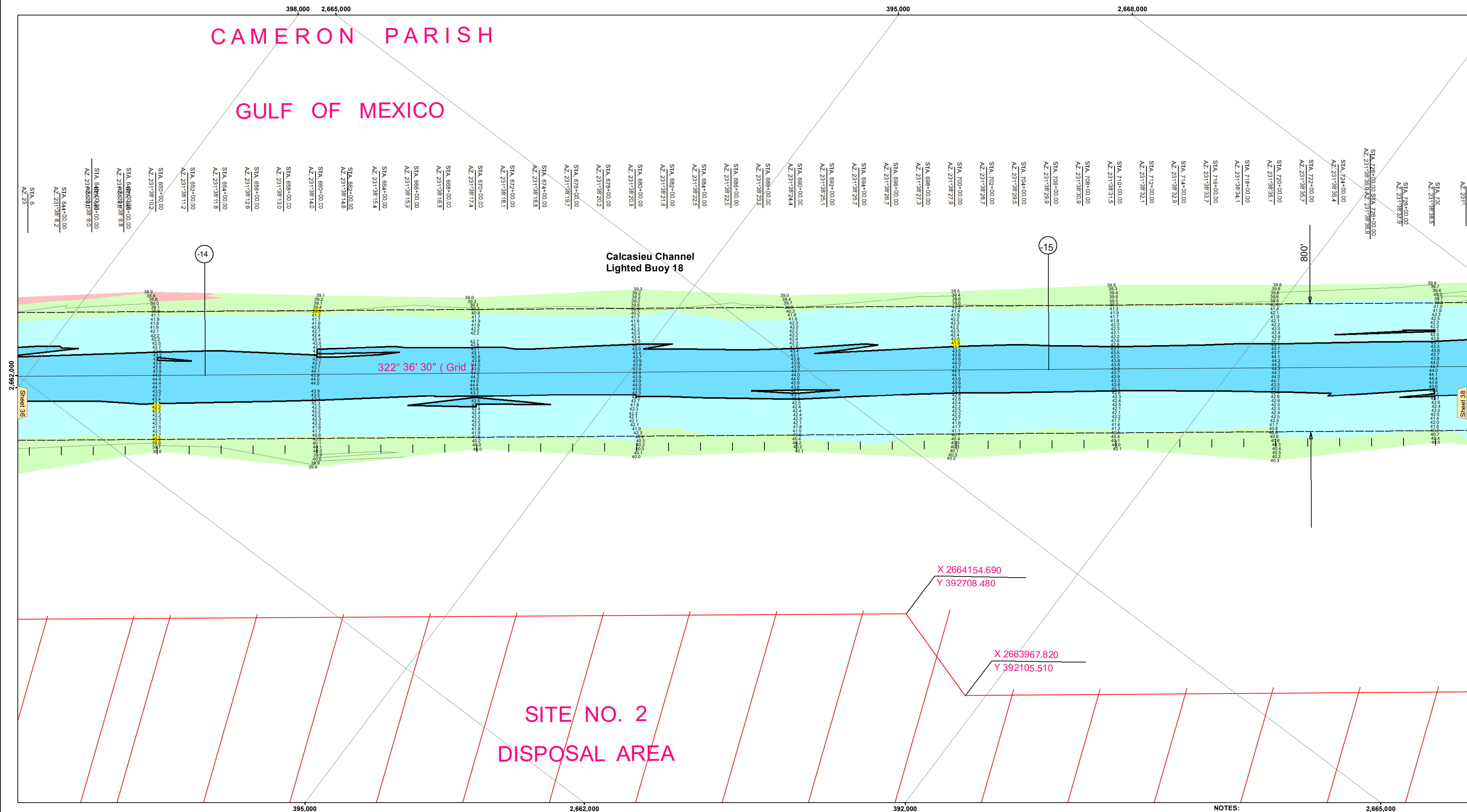
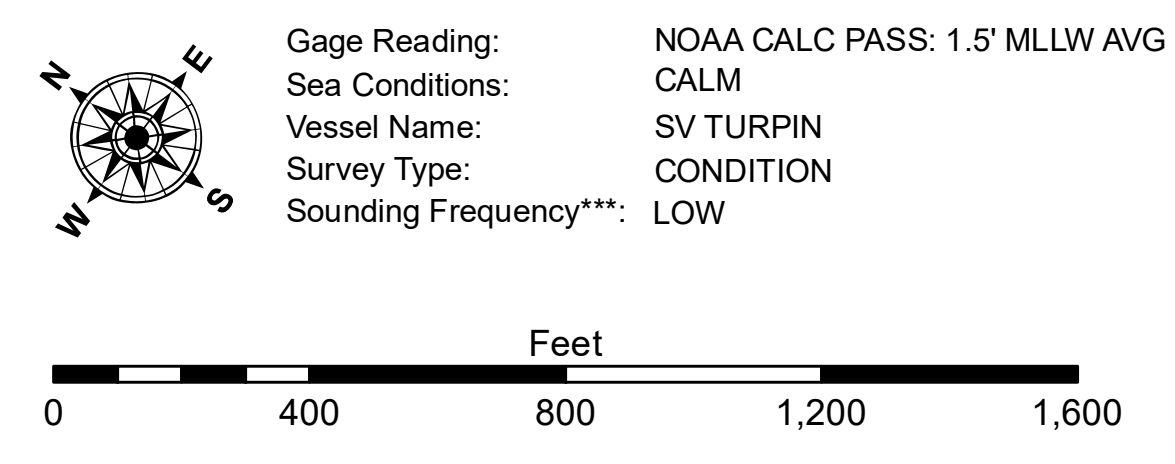


# CAMERON PARISH GULF OF MEXICO



LEGEND	
--- Federal Navigation Channel	● Cable Area
— Federal Navigation Center Line	□ Placement Area
— As-built Pipeline/Cable	□ Anchorage Area
..... Unconfirmed Pipeline/Cable	⊗ Obstruction Point
— Project Depth Contour	⚓ Wrecks-Submerged
3 Fluff Thickness (feet)*	★ Beacon, General
● Shoalest Sounding**	◆ Red Navigation Buoy
● -16' and above	◆ Green Navigation Buoy
● -16' to -21'	
● -21' to -26'	
● -26' to -33'	
● -33' to -39'	
● -39' to -41'	
● -41' to -43'	
● -43' and below	



**NOTES:**  
 Horizontal Coordinate System:  
 North American Datum of 1983 (NAD83), projected to the State Plane Coordinate System (SPCS), Louisiana South Zone. Distance units in U.S. Survey Feet.  
 Vertical Datum:  
 Soundings are shown in feet and indicate depths below Mean Lower Low Water Datum (MLLW).  
 Datum Relationships for gage 73650 as of December 2013:  
 0.0' NAVD88 (2009.55) = 1.3' MLLW = 2.3' MLG or 0.0' MLLW = 1.0' MLG  
 Distances on the Calcasieu River are shown at 1 mile intervals.  
 The location of navigation aids are based on and provided by the U.S. Coast Guard and USACE survey crews.  
 2015 Aerial Photography data source: NAIP  
 Reference is N.O.A.A. Navigation Chart No. 11339.  
 \* Difference between high and low frequency elevations where greater than 1.0'.  
 \*\* Shoalest Sounding per Quarter per Reach.  
 \*\*\* High frequency (200 kHz) survey data represents the first signal return at a sounding location and will include suspended solids, known as "fluff", if present. Low frequency (20 kHz) survey data normally penetrates through this "fluff" layer to depict elevations of consolidated bottom material. Low frequency accuracies may vary depending on channel conditions and fathometer settings.



**DISCLAIMER:**  
 The information depicted on this map represents the results of a survey conducted by the U.S. Army Corps of Engineers. It is not intended to be used for any purpose other than that for which it was prepared. The user is responsible for the accuracy, completeness, reliability, usability, or suitability for any particular purpose of the information. The U.S. Army Corps of Engineers does not warrant, represent, or guarantee the accuracy, completeness, reliability, usability, or suitability for any particular purpose of the information. These data are based on the best available information and are subject to change without notice. The user is responsible for the accuracy, completeness, reliability, usability, or suitability for any particular purpose of the information. The information depicted on this map represents the results of a survey conducted by the U.S. Army Corps of Engineers. It is not intended to be used for any purpose other than that for which it was prepared. The user is responsible for the accuracy, completeness, reliability, usability, or suitability for any particular purpose of the information. These data are based on the best available information and are subject to change without notice. The user is responsible for the accuracy, completeness, reliability, usability, or suitability for any particular purpose of the information.

Submitted:	Reviewed By:	SWG
Recommended:	Plotted By:	JH
Checked By:	Chief, Survey Section	JH
Approved:	Chief, Waterways Maintenance Section	JH

**CALCASIEU SHIP CHANNEL  
 BAR SHEET 37  
 CR\_37\_BAR\_20210909\_CS\_POSTIDA  
 09 September 2021**

**Sheet Reference Number  
 37 of 53**