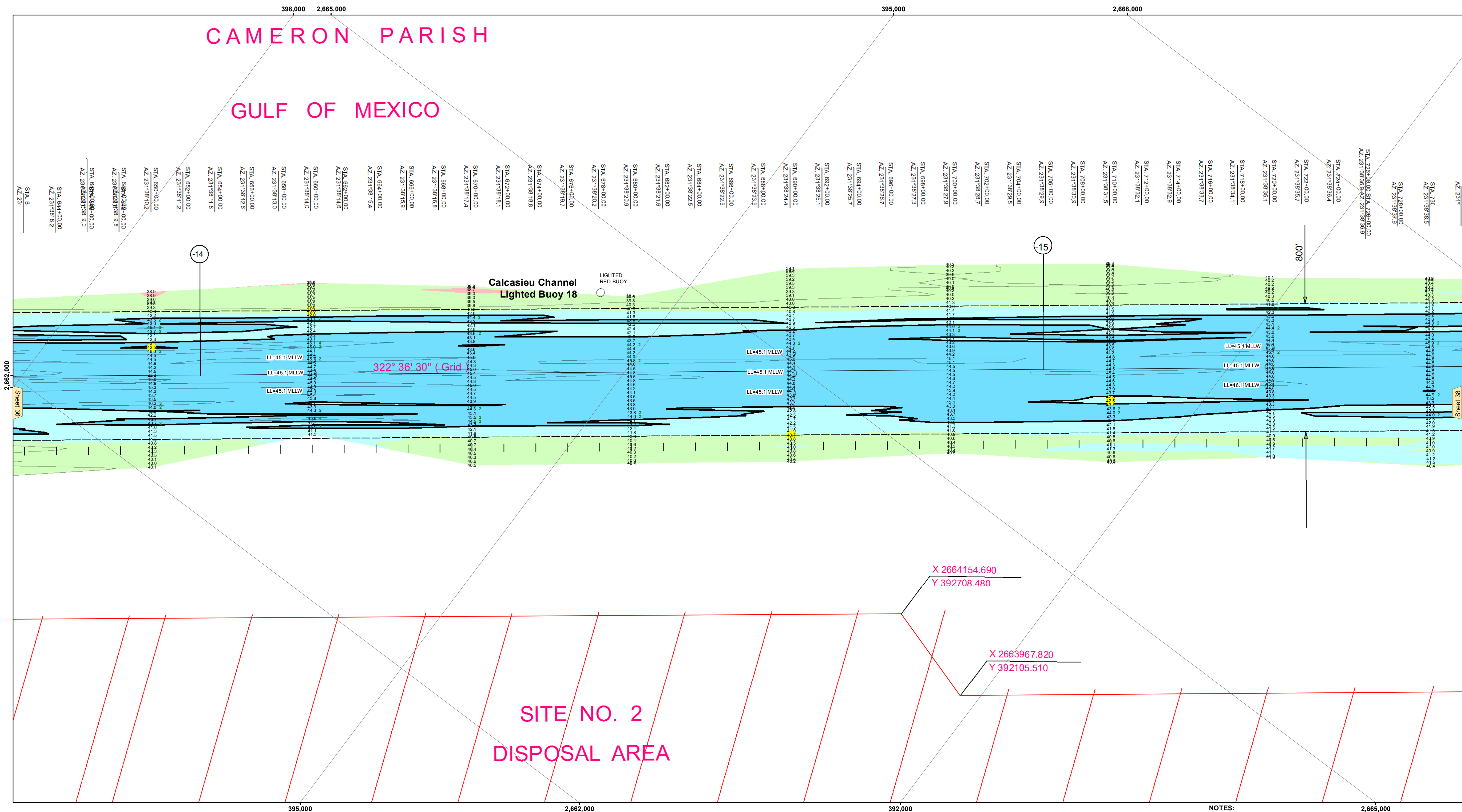


CAMERON PARISH GULF OF MEXICO



US Army Corps of Engineers District: CEMV

DISCLAIMER

The information depicted on this map represents the results of a survey conducted by the United States Army Corps of Engineers. The user is responsible for the accuracy, completeness, reliability, usability, or suitability for any particular purpose of the information. These data are provided as a reference only and are not intended to be used as a substitute for a professional survey. The user is advised to consult the appropriate technical manual for the use of this information. The user is advised to consult the appropriate technical manual for the use of this information. The user is advised to consult the appropriate technical manual for the use of this information.

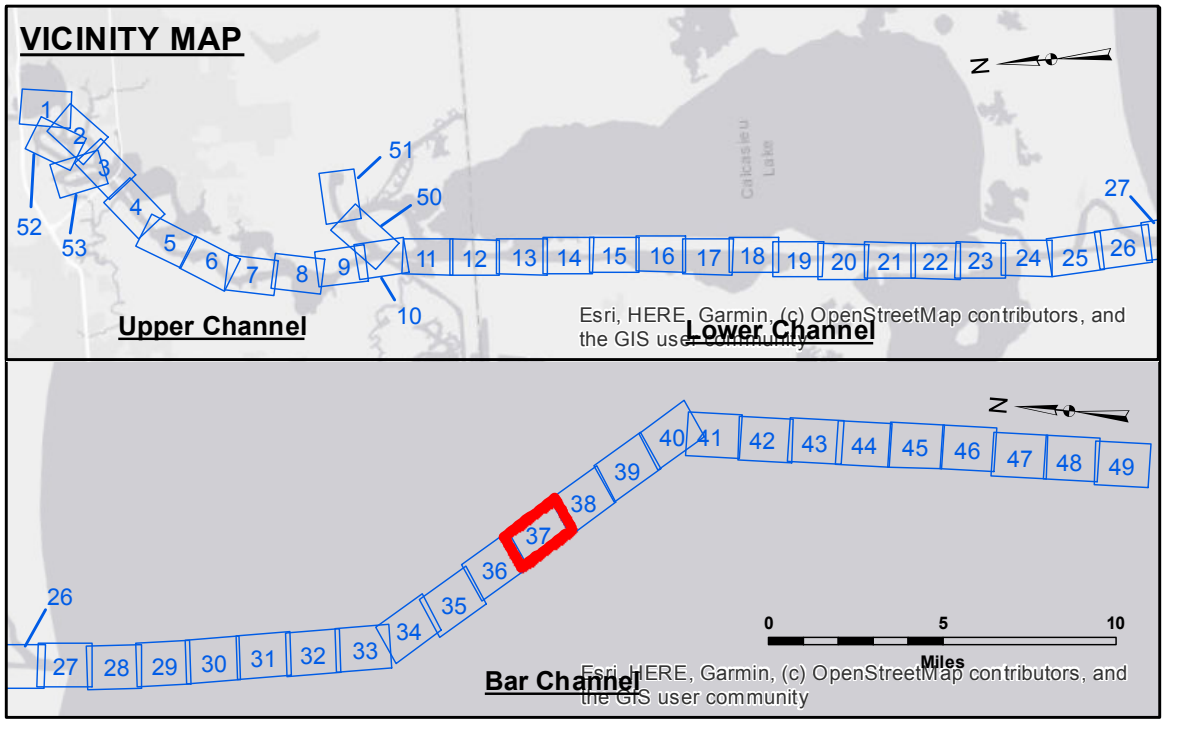
Submitted:	SPPS
Reviewed By:	JH
Checked By:	JH

U.S. ARMY CORPS OF ENGINEERS
NEW ORLEANS DISTRICT

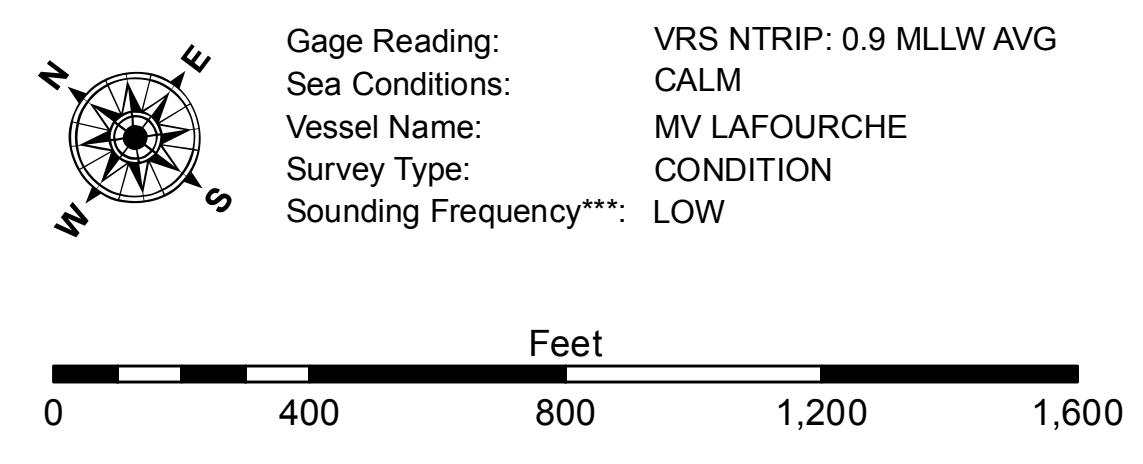
Chief, Survey Section

Chief, Waterways Maintenance Section

**CALCASIEU SHIP CHANNEL
BAR SHEET 37
CR_37_BAR_20220316_CS
16 March 2022**



LEGEND	
--- Federal Navigation Channel	● Cable Area
— Federal Navigation Center Line	□ Placement Area
— As-built Pipeline/Cable	⊗ Anchorage Area
..... Unconfirmed Pipeline/Cable	⊗ Obstruction Point
— Project Depth Contour	⊗ Wrecks-Submerged
3 Fluff Thickness (feet)*	★ Beacon, General
● Shoalest Sounding**	◆ Red Navigation Buoy
● -16' and above	◆ Green Navigation Buoy
● -16' to -21'	
● -21' to -26'	
● -26' to -33'	
● -33' to -39'	
● -39' to -41'	
● -41' to -43'	
● -43' and below	



NOTES:

Horizontal Coordinate System: North American Datum of 1983 (NAD83), projected to the State Plane Coordinate System (SPCS), Louisiana South Zone. Distance units in U.S. Survey Feet.

Vertical Datum: Soundings are shown in feet and indicate depths below Mean Lower Low Water Datum (MLLW). Datum Relationships for gage 73650 as of December 2013: 0.0' NAVD88 (2009.55) = 1.3' MLLW = 2.3' MLG or 0.0' MLLW = 1.0' MLG

Distances on the Calcasieu River are shown at 1 mile intervals.

The location of navigation aids are based on and provided by the U.S. Coast Guard and USACE survey crews.

2015 Aerial Photography data source: NAIP

Reference is N.O.A.A. Navigation Chart No. 11339.

* Difference between high and low frequency elevations where greater than 1.0'.

** Shoalest Sounding per Quarter per Reach.

*** High frequency (200 kHz) survey data represents the first signal return at a sounding location and will include suspended solids, known as "fluff", if present. Low frequency (20 kHz) survey data normally penetrates through this "fluff" layer to depict elevations of consolidated bottom material. Low frequency accuracies may vary depending on channel conditions and fathometer settings.

**Sheet Reference Number
37 of 53**

Revision Number:
4.2-20220420