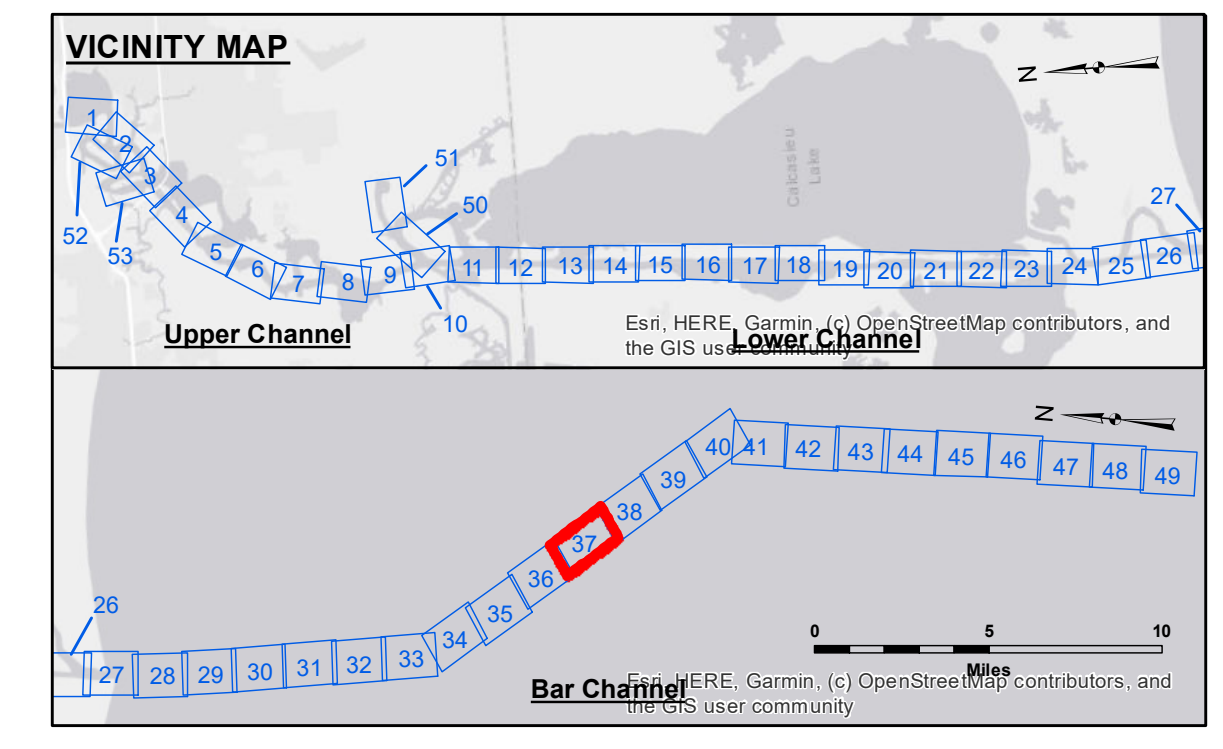
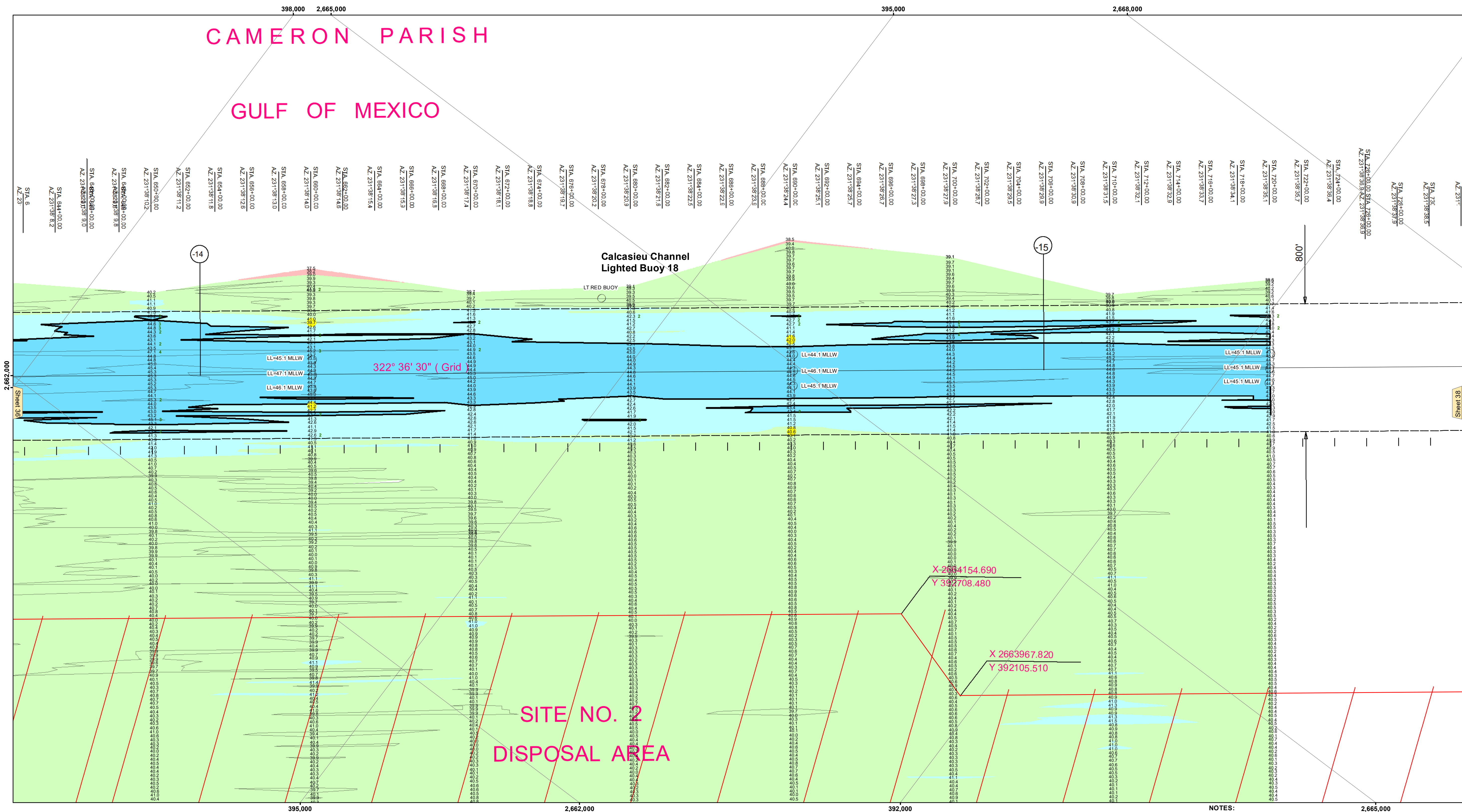


# CAMERON PARISH GULF OF MEXICO



LEGEND	
--- Federal Navigation Channel	● Cable Area
— Federal Navigation Center Line	□ Placement Area
— As-built Pipeline/Cable	⊗ Anchorage Area
..... Unconfirmed Pipeline/Cable	⊗ Obstruction Point
— Project Depth Contour	⊗ Wrecks-Submerged
3 Fluff Thickness (feet)*	★ Beacon, General
● Shoalest Sounding**	◆ Red Navigation Buoy
★ Beacon, General	◆ Green Navigation Buoy

Gage Reading: VRS RTK NTRIP: 1.88 MLLW AVG.  
 Sea Conditions: CHOPPY  
 Vessel Name: MV LAFLOURCHE  
 Survey Type: CONDITION  
 Sounding Frequency\*\*\*: HIGH/LOW

Vertical Datum: CHOPPY  
 Datum Relationships for gage 73650 as of December 2013:  
 0.0' NAVD88 (2009.55) = 1.3' MLLW = 2.3' MLG or 0.0' MLLW = 1.0' MLG

Distances on the Calcasieu River are shown at 1 mile intervals.  
 The location of navigation aids are based on and provided by the U.S. Coast Guard and USACE survey crews.

2015 Aerial Photography data source: NAIP  
 Reference is N.O.A.A. Navigation Chart No. 11339.

\* Difference between high and low frequency elevations where greater than 1.0'.  
 \*\* Shoalest Sounding per Quarter per Reach.  
 \*\*\* High frequency (200 kHz) survey data represents the first signal return at a sounding location and will include suspended solids, known as "fluff", if present. Low frequency (20 kHz) survey data normally penetrates through this "fluff" layer to depict elevations of consolidated bottom material. Low frequency accuracies may vary depending on channel conditions and fathometer settings.

**NOTES:**  
 Horizontal Coordinate System:  
 North American Datum of 1983 (NAD83), projected to the State Plane  
 Coordinate System (SPCS), Louisiana South Zone. Distance units in U.S. Survey Feet.



**DISCLAIMER:**  
 The information depicted on this map represents the results of a survey conducted by the United States Army Corps of Engineers. The user of this information is advised that the information is provided for informational purposes only and is not intended to be used for any other purpose. The user is responsible for the accuracy, completeness, and reliability of the information. The user is advised that the information is provided under no warranty, express or implied, and that the user assumes all liability for any use of the information. The user is advised that the information is provided for informational purposes only and is not intended to be used for any other purpose. The user is responsible for the accuracy, completeness, and reliability of the information. The user is advised that the information is provided under no warranty, express or implied, and that the user assumes all liability for any use of the information.

Submitted:	SPPS
Recommended:	BD
Checked By:	AC

U.S. ARMY CORPS OF ENGINEERS  
 NEW ORLEANS DISTRICT  
 Chief, Waterways Maintenance Section

**CALCASIEU SHIP CHANNEL  
 BAR SHEET 37  
 CR\_37\_BAR\_2020517\_CS  
 17 May 2022**

**Sheet Reference Number  
 37 of 53**

Revision Number:  
 4.2-202 (04/20)